

SAFETY AND SCHOOL ENVIRONMENT

Non-CSAP Course Offerings

Your School Offers	does	does not
• art.....	<input checked="" type="checkbox"/>	<input type="checkbox"/>
• drama or theater.....	<input checked="" type="checkbox"/>	<input type="checkbox"/>
• music.....	<input checked="" type="checkbox"/>	<input type="checkbox"/>
• physical education.....	<input checked="" type="checkbox"/>	<input type="checkbox"/>
• opportunity for civic or community engagement.....	<input checked="" type="checkbox"/>	<input type="checkbox"/>
• internet safety program.....	<input checked="" type="checkbox"/>	<input type="checkbox"/>
• International Baccalaureate.....	<input type="checkbox"/>	<input checked="" type="checkbox"/>
• extracurricular activities.....	<input checked="" type="checkbox"/>	<input type="checkbox"/>
• athletics.....	<input type="checkbox"/>	<input checked="" type="checkbox"/>
• preschool program.....	<input checked="" type="checkbox"/>	<input type="checkbox"/>
• full-day kindergarten program.....	<input checked="" type="checkbox"/>	<input type="checkbox"/>
• before-and-after-school care program.....	<input type="checkbox"/>	<input checked="" type="checkbox"/>

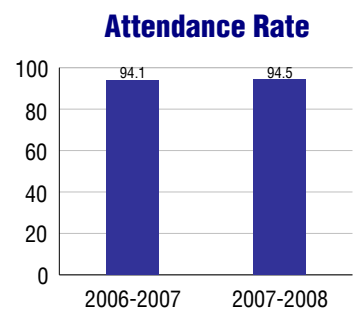
Safety and Discipline

Safe schools are a top priority for parents, teachers, and communities. Your school safety and discipline record for the 2007-2008 school year is:

Type of Incident	Number of Incidents Reported	Percent of Total Incidents
Substance Abuse - Drugs		
Substance Abuse - Alcohol		
Substance Abuse - Tobacco		
Felony Assaults		
Fights		
Possession of Dangerous Weapons		
Other Violations Code of Conduct	14	100.0%

Student Attendance and School Calendar

2007-2008	Your School
Enrollment	487
Average Daily Attendance	460
Student Dropouts	N/A



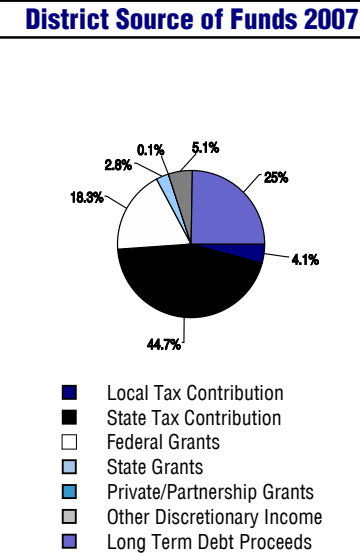
Student Information Over Time

	2005-2006	2006-2007	2007-2008
Student Enrollment Stability	79.2%	95.0%	97.9%
Students Eligible for Free and Reduced Lunch	51.9 %	55.0 %	55.6 %

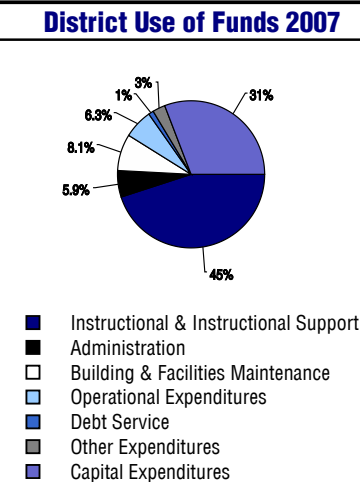
For more information and further details about this report, visit www.state.co.us/schools
 Colorado Department of Education, 201 East Colfax Ave. Denver, CO 80203
Aragon Elementary School
 1000/3102/E
 211 South Main Street . Fountain, CO 80817 . 719-382-1340
 10/20/2008

DISTRICT TAXPAYER'S REPORT

Sources of School District Revenue	2007
Local Tax Contribution	\$2,918,597
State Tax Contribution	31,616,748
Federal Grants	12,965,544
State Grants	1,943,770
Private/Partnership Grants	53,830
Other Discretionary Income	3,636,502
Total District Operating Revenue	\$53,134,991
Long Term Debt Proceeds	17,526,868
Total District Revenue	\$70,661,859
Total District Operating Revenue Per Pupil =	\$9,249
Total District Revenue Per Pupil (Including Long Term Debt) =	\$12,300
District Per Pupil Operating Revenue =	\$5,718
State Average Per Pupil Operating Revenue =	\$6,080



District Use of Funds	2007
Instructional & Instructional Support	\$29,210,654
Administration	3,871,092
Building & Facilities Maintenance	5,273,207
Operational Expenditures	4,116,533
Debt Service	725,287
Other Expenditures	1,920,369
Total District Operating Expenditures	\$45,117,142
Capital Expenditures	19,983,864
Total District Use of Funds	\$65,101,006



District Debt and Capital Construction & Equipment

Total Outstanding Bonded Debt	\$0
Average Annual Percentage Interest Rate on Debt	0%
Amount Raised from Most Recent Bond	\$0
Amount Spent on New Buildings During Last 2 Years	\$33,140,886

Accreditation

Accreditation is Colorado's primary accountability system, incorporating achievement levels, academic growth, achievement gaps, post-secondary readiness, improvement planning, and compliance. The state accredits districts and districts accredit individual schools.

District Accreditation Status for the 2007-2008 school year:

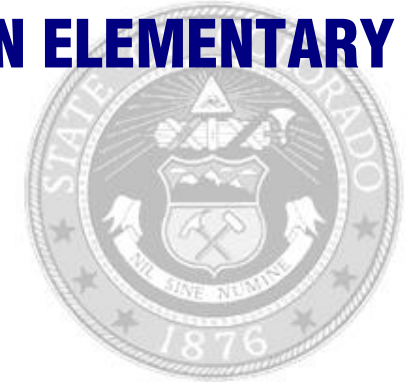
Voter Approved Funding Changes

Your community did /did not hold an election in November 2006

The following items have been approved by voters:

- TABOR Override
- Bond
- Mill Levy Increase

ARAGON ELEMENTARY SCHOOL



FOUNTAIN 8

<http://www.ffc8.org/>

School Accountability Report 2007-2008 School Year

School Performance Summary

Overall Academic Performance on State Assessments **Average**

Academic Growth of Students **Typical**

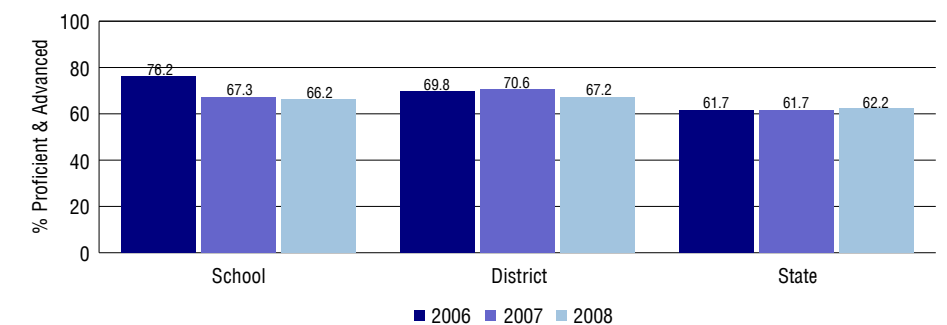
Overall Academic Performance on State Assessments

Each school in the State received a rating of "Excellent", "High", "Average", "Low", or "Unsatisfactory" for student academic performance based on 2007-2008 CSAP and COACT results. The rating is calculated using weighted percentages of each CSAP proficiency level for all content area and grade results for the school, as well as average COACT Reading, Writing, and Math Grade 11 results.

Academic Growth of Students

Each school in the State received a rating of "Low", "Typical", or "High" for student academic growth based on CSAP results. The calculation method is new for 2007-2008. The rating is calculated using student percentile scores matched over two years. More information about the Overall Academic Performance rating and Academic Growth of Students calculations can be found here: http://www.cde.state.co.us/cdeassess/SAR_Info.html.

Percent Proficient and Advanced for Elementary Grades for All Content Areas



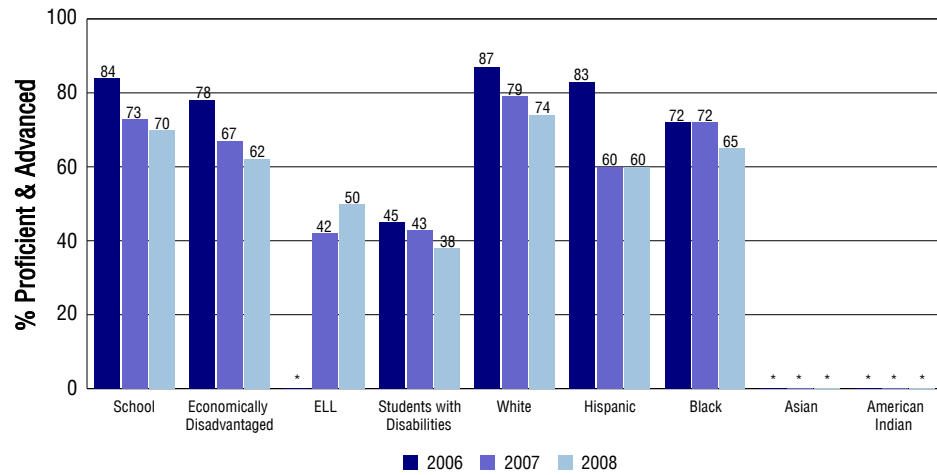
Student Test Scores Used For Calculating Overall Academic Performance

85.4%	Test Scores Counted
8.6%	Test Scores not used due to Language
6.0%	Test Scores not used due to New Student

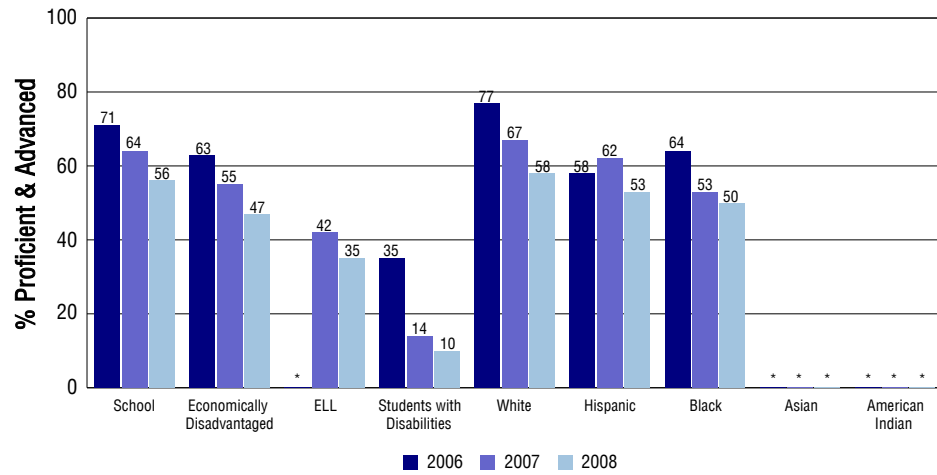
STUDENT PERFORMANCE

These graphs show the percent Proficient and Advanced trends over the past three years for Reading, Writing, and Math. Results are presented for the entire school for all reported grades as well as for different subgroups. Note: * indicates any group with less than 16 student results to be reported.

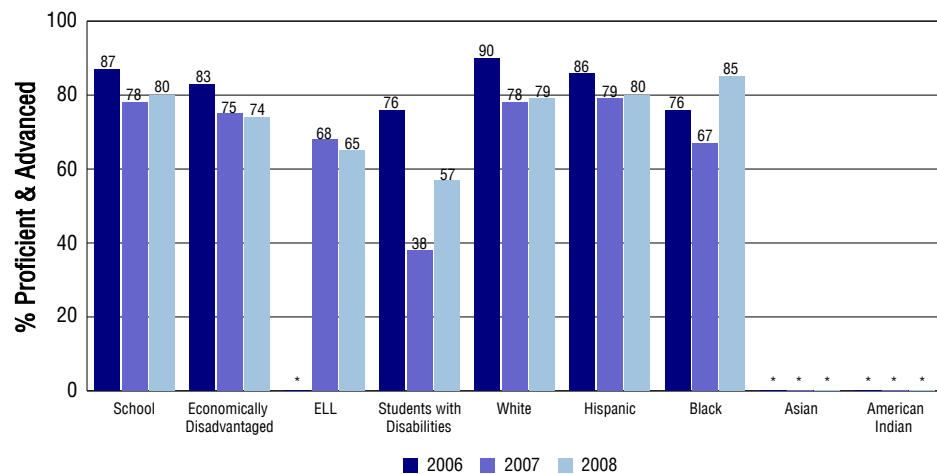
Reading



Writing



Math



SCHOOL INFORMATION

School Pride (as submitted by your district)

- The Aragon staff reinforce responsible, respectful and safe behavior of all students.
- The ultimate purpose of the RtI process is to enhance the success of student with a variety of academic or behavioral needs.
- Administrators, teachers and support staff work together on a daily basis to reach desired outcomes for all children.
- Creating higher levels of parent involvement has been a focus for the Aragon community and our Parents in Action group has worked hard for our students.

School Goals (as submitted by your district)

At Aragon Elementary our physical environment will be welcoming and a place where everyone feels safe and supported. Our staff relationships will be characterized by a high degree of professionalism demonstrated through confidentiality, collaboration, respectful interactions, and a positive attitude. With administrative support, our staff will grow professionally and use research based teaching strategies and assessments to encourage individual student enhancement. Every student will be individually challenged to his/her full potential.

No Child Left Behind - Adequate Yearly Progress

Did your school make AYP in reading?	Yes	Math?	Yes
How many targets does your school have?	24	Met?	24

Based on this school's academic performance, your child may be eligible for one or more of the following; ask your school if your child qualifies for:

Extra academic instruction either before or after-school, or in the summer
Mentoring

For additional information regarding Adequate Yearly Progress please visit
<http://www.cde.state.co.us/FedPrograms/ayp/index.asp>

How Aragon Elementary School Compares To Elementary Schools Within A 75-Mile Radius

School	Program Type	Academic Performance	Academic Growth
Eagleside Elementary School		High	Typical
Jordahl Elementary School		High	Typical
Mesa Elementary School		High	Low
James Madison Charter Academy School(1)	Charter	Average	Typical
Webster Elementary School(1)		High	High
Martin Luther King Jr Elementary School(1)		Average	Typical
Sunrise Elementary School(1)		High	Typical
Talbott Elementary School(1)		Average	High
Venetucci Elementary School(1)		Average	High
Widefield Elementary School(1)		Average	Typical

1 Located in Widefield 3 School District.

ABOUT OUR STAFF

School Employment

Each year, your district reports to the Colorado Department of Education on the number of adults who work in your school, as well as the type of work they do. Last year, your school employed:

	Your School		District	
	Full Time	Part Time	Full Time	Part Time
Teachers	27	1	373	11
Paraprofessionals	13	2	79	32
Administrators	2	0	35	1
Other Professionals	2	2	46	8
School Support	4	2	102	72
School Counselors	1	0	15	0
School Librarians	1	0	10	0
Total Staff	57		784	

Students per Teacher Ratio

	Student Enrollment	Students per Teacher
Grade 1	76	14.3
Grade 2	88	16.6
Grade 3	75	17.4
Grade 4	74	17.2
Grade 5	65	15.1

Professional Experience of Teachers

	Your School	District
Average years of teaching experience	8	8
Percent of teachers teaching in the subject in which they received their degree	N/A	N/A
Number of teachers with Masters or Doctoral degrees	19	197
Teachers with 3 years or more of teaching experience	22	282
Teachers with less than 3 years of teaching experience	6	102
Number of professional development days	5	5

Salaries

	Your School	District	State
Average Teacher Salary	\$43,868	\$43,230	\$47,494
Average Administrator Salary	\$74,891	\$88,148	\$80,444

Principal: Clinton Allison

Number of years as Principal at this school: 2

Number of years as Principal at any school: 2