

# SAFETY AND SCHOOL ENVIRONMENT

## Non-CSAP Course Offerings

Your School Offers	does	does not
• art.....	<input checked="" type="checkbox"/>	<input type="checkbox"/>
• drama or theater.....	<input type="checkbox"/>	<input checked="" type="checkbox"/>
• music.....	<input type="checkbox"/>	<input checked="" type="checkbox"/>
• physical education.....	<input checked="" type="checkbox"/>	<input type="checkbox"/>
• opportunity for civic or community engagement.....	<input checked="" type="checkbox"/>	<input type="checkbox"/>
• internet safety program.....	<input checked="" type="checkbox"/>	<input type="checkbox"/>
• International Baccalaureate.....	<input type="checkbox"/>	<input checked="" type="checkbox"/>
• extracurricular activities.....	<input checked="" type="checkbox"/>	<input type="checkbox"/>
• athletics.....	<input type="checkbox"/>	<input checked="" type="checkbox"/>
• career and technical education.....	<input checked="" type="checkbox"/>	<input type="checkbox"/>
• advanced placement.....	<input type="checkbox"/>	<input checked="" type="checkbox"/>
• honors.....	<input type="checkbox"/>	<input checked="" type="checkbox"/>

## Safety and Discipline

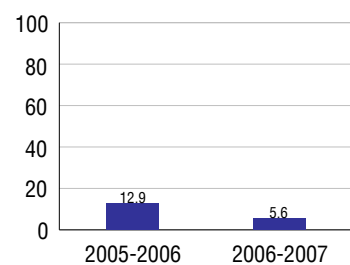
Safe schools are a top priority for parents, teachers, and communities. Your school safety and discipline record for the 2007-2008 school year is:

Type of Incident	Number of Incidents Reported	Percent of Total Incidents
Substance Abuse - Drugs	5	5.4%
Substance Abuse - Alcohol	3	3.3%
Substance Abuse - Tobacco	1	1.1%
Felony Assaults		
Fights		
Possession of Dangerous Weapons		
Other Violations Code of Conduct	83	90.2%

## Student Attendance and School Calendar

2007-2008	Your School
Enrollment	101
Average Daily Attendance	94
Student Dropouts	5.6%

## Dropout Rate



## Student Information Over Time

	2005-2006	2006-2007	2007-2008
Student Enrollment Stability	84.5%	84.1%	88.1%
Students Eligible for Free and Reduced Lunch	4.1 %	7.5 %	6.9 %

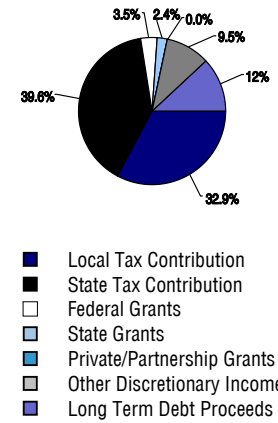
For more information and further details about this report, visit [www.state.co.us/schools](http://www.state.co.us/schools)  
 Colorado Department of Education, 201 East Colfax Ave. Denver, CO 80203  
**Aspen Valley High School**  
 1040/0209/H  
 1450 Chapel Hills Drive . Colorado Springs, CO 80920 . 719-234-6000  
 10/20/2008

# DISTRICT TAXPAYER'S REPORT

## Sources of School District Revenue 2007

Local Tax Contribution	\$72,894,575
State Tax Contribution	87,704,768
Federal Grants	7,697,165
State Grants	5,344,051
Private/Partnership Grants	106,705
Other Discretionary Income	21,038,721
<b>Total District Operating Revenue</b>	<b>\$194,785,985</b>
Long Term Debt Proceeds	26,704,026
<b>Total District Revenue</b>	<b>\$221,490,011</b>
<b>Total District Operating Revenue Per Pupil =</b>	<b>\$9,707</b>
<b>Total District Revenue Per Pupil (Including Long Term Debt) =</b>	<b>\$11,037</b>
<b>District Per Pupil Operating Revenue =</b>	<b>\$5,723</b>
<b>State Average Per Pupil Operating Revenue =</b>	<b>\$6,080</b>

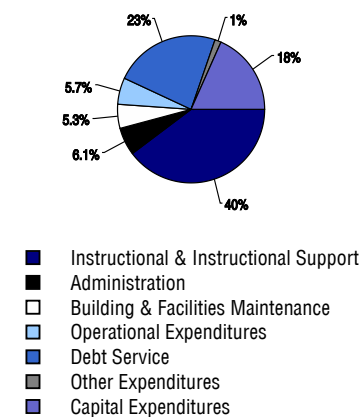
## District Source of Funds 2007



## District Use of Funds 2007

Instructional & Instructional Support	\$114,062,404
Administration	17,500,697
Building & Facilities Maintenance	15,242,632
Operational Expenditures	16,214,407
Debt Service	67,378,705
Other Expenditures	3,863,903
<b>Total District Operating Expenditures</b>	<b>\$234,262,748</b>
Capital Expenditures	52,595,270
<b>Total District Use of Funds</b>	<b>\$286,858,018</b>

## District Use of Funds 2007



## District Debt and Capital Construction & Equipment

Total Outstanding Bonded Debt	\$212,614,463
Average Annual Percentage Interest Rate on Debt	4.5%
Amount Raised from Most Recent Bond	\$163,000,000
Amount Spent on New Buildings During Last 2 Years	\$59,382,173

## Accreditation

Accreditation is Colorado's primary accountability system, incorporating achievement levels, academic growth, achievement gaps, post-secondary readiness, improvement planning, and compliance. The state accredits districts and districts accredit individual schools.

District Accreditation Status for the 2007-2008 school year:

## Voter Approved Funding Changes

Your community did  /did not  hold an election in November 2006

The following items have been approved by voters:

TABOR Override

Bond

Mill Levy Increase

# ASPEN VALLEY HIGH SCHOOL



## ACADEMY 20

### Alternative

<http://www.asd20.org/education/district/district.php?sectionid=1>

## School Accountability Report 2007-2008 School Year

### School Performance Summary

**Overall Academic Performance on State Assessments** **Average**

**Academic Growth of Students** **No Rating**

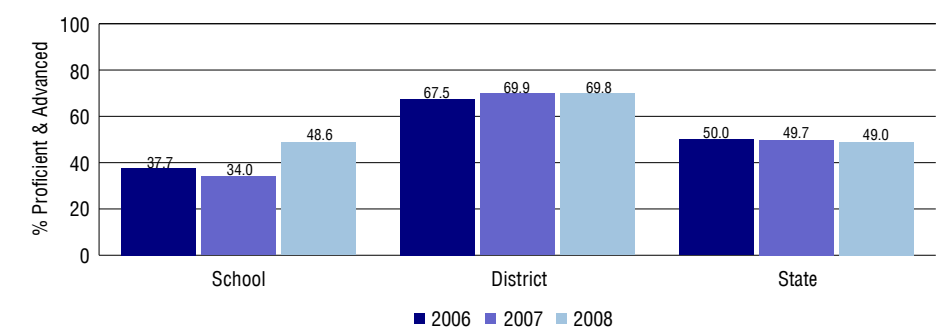
#### Overall Academic Performance on State Assessments

Each school in the State received a rating of "Excellent", "High", "Average", "Low", or "Unsatisfactory" for student academic performance based on 2007-2008 CSAP and COACT results. The rating is calculated using weighted percentages of each CSAP proficiency level for all content area and grade results for the school, as well as average COACT Reading, Writing, and Math Grade 11 results.

#### Academic Growth of Students

Each school in the State received a rating of "Low", "Typical", or "High" for student academic growth based on CSAP results. The calculation method is new for 2007-2008. The rating is calculated using student percentile scores matched over two years. More information about the Overall Academic Performance rating and Academic Growth of Students calculations can be found here: [http://www.cde.state.co.us/cdeassess/SAR\\_Info.html](http://www.cde.state.co.us/cdeassess/SAR_Info.html).

### Percent Proficient and Advanced for High Grades for All Content Areas



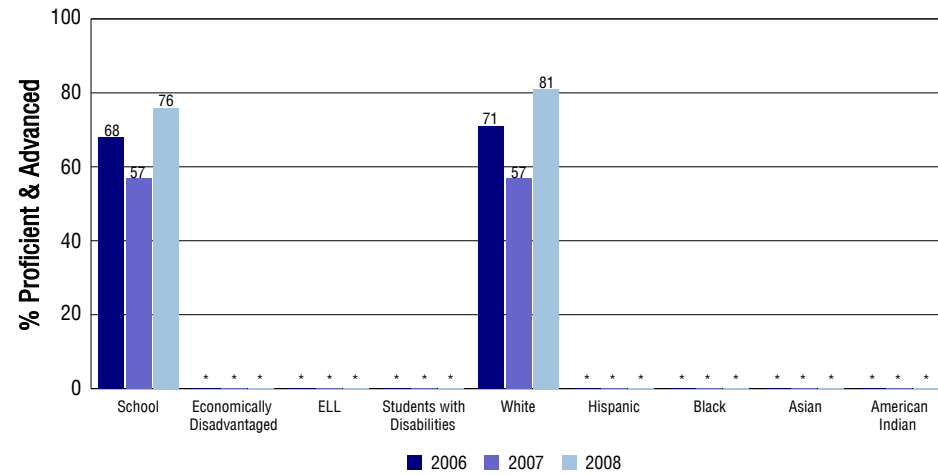
### Student Test Scores Used For Calculating Overall Academic Performance

57.1%	Test Scores Counted
0.0%	Test Scores not used due to Language
42.9%	Test Scores not used due to New Student

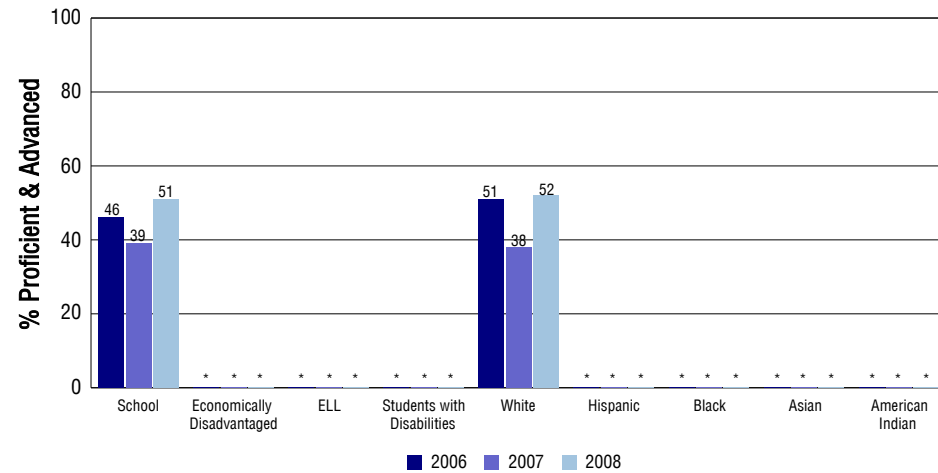
## STUDENT PERFORMANCE

These graphs show the percent Proficient and Advanced trends over the past three years for Reading, Writing, and Math. Results are presented for the entire school for all reported grades as well as for different subgroups. Note: \* indicates any group with less than 16 student results to be reported.

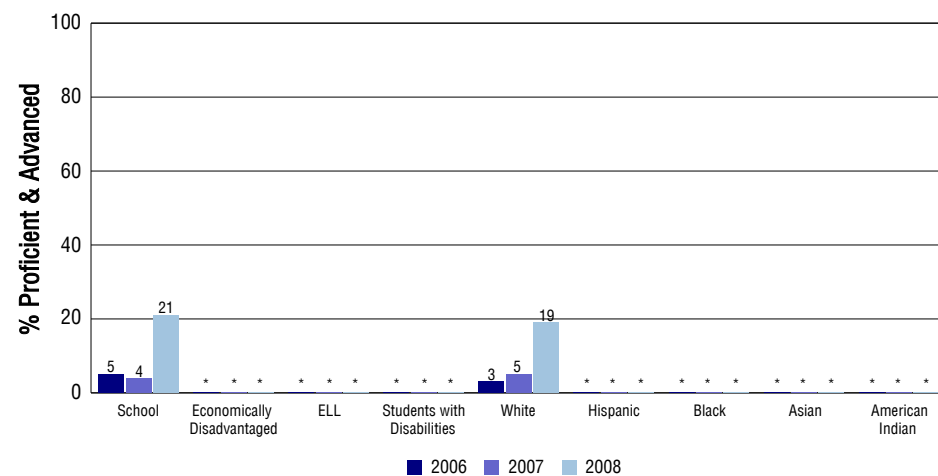
### Reading



### Writing



### Math



## SCHOOL INFORMATION

### School Pride (as submitted by your district)

- State of the art technology is incorporated into classroom instruction
- Highly individualized mathematics curriculum is accessible from home
- All students complete college classes as part of graduation requirements
- Only district Positive Behavior Support high school

### School Goals (as submitted by your district)

All students will demonstrate growth and proficiency in standards based assessments, student driven portfolios and academic performance. All students will use technology to improve student information literacy skills. All students will feel accepted and demonstrate respect for self and others.

### No Child Left Behind - Adequate Yearly Progress

Did your school make AYP in reading? Yes Math? No  
 Did your school make the graduation rate targets? No  
 How many targets does your school have? 8 Met? 5

Based on this school's academic performance, your child may be eligible for one or more of the following; ask your school if your child qualifies for:

Extra academic instruction either before or after-school, or in the summer  
 Mentoring

For additional information regarding Adequate Yearly Progress please visit  
<http://www.cde.state.co.us/FedPrograms/ayp/index.asp>

### How Aspen Valley High School Compares To High Schools Within A 75-Mile Radius

School	Program Type	Academic Performance	Academic Growth
Rampart High School		Excellent	Typical
Pine Creek High School		Excellent	Typical
Liberty High School		High	Typical
Civa Charter Academy(1)	Charter, Alternative	Average	Typical
Doherty High School(1)		High	Typical
Colorado Springs Early Colleges(2)	Charter	High	Typical
Air Academy High School		Excellent	High
The Classical Academy High School	Charter	Excellent	High
Wasson High School(1)		Average	Typical
Coronado High School(1)		High	Typical

1 Located in Colorado Springs 11 School District.  
 2 Located in Charter School Institute School District.

## ABOUT OUR STAFF

### School Employment

Each year, your district reports to the Colorado Department of Education on the number of adults who work in your school, as well as the type of work they do. Last year, your school employed:

	Your School		District	
	Full Time	Part Time	Full Time	Part Time
Teachers	9	3	1207	174
Paraprofessionals	0	1	297	208
Administrators	1	0	128	5
Other Professionals	1	2	142	68
School Support	3	1	439	195
School Counselors	1	0	44	19
School Librarians	0	0	13	6
<b>Total Staff</b>	20		2880	

### Students per Teacher Ratio

	Student Enrollment	Students per Teacher
Grade 9	4	1.5
Grade 10	21	8
Grade 11	32	12.2
Grade 12	44	16.7

### Professional Experience of Teachers

	Your School	District
Average years of teaching experience	12	11
Percent of teachers teaching in the subject in which they received their degree	67%	78%
Number of teachers with Masters or Doctoral degrees	6	758
Teachers with 3 years or more of teaching experience	11	1149
Teachers with less than 3 years of teaching experience	1	232
Number of professional development days	4	4

### Salaries

	Your School	District	State
Average Teacher Salary	\$44,129	\$44,227	\$47,494
Average Administrator Salary	\$91,277	\$85,591	\$80,444

Principal: George Stone

Number of years as Principal at this school: 4

Number of years as Principal at any school: 4