

SAFETY AND SCHOOL ENVIRONMENT

Non-CSAP Course Offerings

Your School Offers	does	does not
• art.....	<input checked="" type="checkbox"/>	<input type="checkbox"/>
• drama or theater.....	<input checked="" type="checkbox"/>	<input type="checkbox"/>
• music.....	<input checked="" type="checkbox"/>	<input type="checkbox"/>
• physical education.....	<input checked="" type="checkbox"/>	<input type="checkbox"/>
• opportunity for civic or community engagement.....	<input checked="" type="checkbox"/>	<input type="checkbox"/>
• internet safety program.....	<input checked="" type="checkbox"/>	<input type="checkbox"/>
• International Baccalaureate.....	<input type="checkbox"/>	<input checked="" type="checkbox"/>
• extracurricular activities.....	<input checked="" type="checkbox"/>	<input type="checkbox"/>
• athletics.....	<input checked="" type="checkbox"/>	<input type="checkbox"/>
• career and technical education.....	<input checked="" type="checkbox"/>	<input type="checkbox"/>
• honors.....	<input type="checkbox"/>	<input checked="" type="checkbox"/>

Safety and Discipline

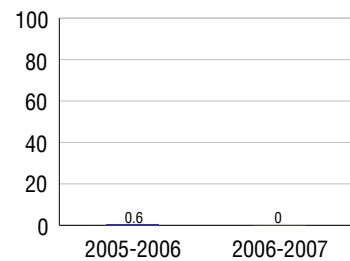
Safe schools are a top priority for parents, teachers, and communities. Your school safety and discipline record for the 2007-2008 school year is:

Type of Incident	Number of Incidents Reported	Percent of Total Incidents
Substance Abuse - Drugs		
Substance Abuse - Alcohol		
Substance Abuse - Tobacco	1	1.4%
Felony Assaults	1	1.4%
Fights		
Possession of Dangerous Weapons		
Other Violations Code of Conduct	68	97.1%

Student Attendance and School Calendar

2007-2008	Your School
Enrollment	583
Average Daily Attendance	555
Student Dropouts	0.0%

Dropout Rate



Student Information Over Time

	2005-2006	2006-2007	2007-2008
Student Enrollment Stability	97.4%	98.6%	97.9%
Students Eligible for Free and Reduced Lunch	2.9 %	2.0 %	3.3 %

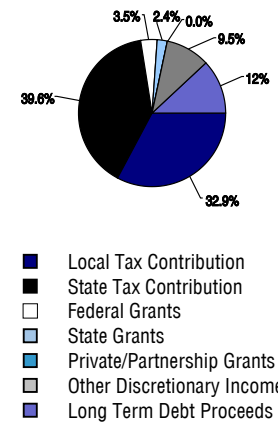
For more information and further details about this report, visit www.state.co.us/schools
 Colorado Department of Education, 201 East Colfax Ave. Denver, CO 80203
Challenger Middle School
 1040/0074/M
 10215 Lexington Drive . Colorado Springs, CO 80920 . 719-234-3000
 10/20/2008

DISTRICT TAXPAYER'S REPORT

Sources of School District Revenue 2007

Local Tax Contribution	\$72,894,575
State Tax Contribution	87,704,768
Federal Grants	7,697,165
State Grants	5,344,051
Private/Partnership Grants	106,705
Other Discretionary Income	21,038,721
Total District Operating Revenue	\$194,785,985
Long Term Debt Proceeds	26,704,026
Total District Revenue	\$221,490,011
Total District Operating Revenue Per Pupil =	\$9,707
Total District Revenue Per Pupil (Including Long Term Debt) =	\$11,037
District Per Pupil Operating Revenue =	\$5,723
State Average Per Pupil Operating Revenue =	\$6,080

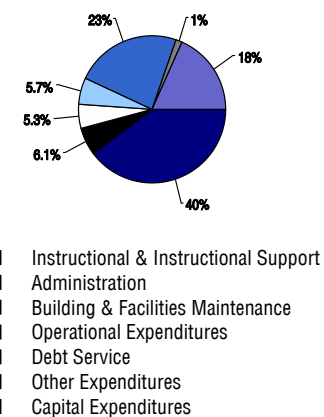
District Source of Funds 2007



District Use of Funds 2007

Instructional & Instructional Support	\$114,062,404
Administration	17,500,697
Building & Facilities Maintenance	15,242,632
Operational Expenditures	16,214,407
Debt Service	67,378,705
Other Expenditures	3,863,903
Total District Operating Expenditures	\$234,262,748
Capital Expenditures	52,595,270
Total District Use of Funds	\$286,858,018

District Use of Funds 2007



District Debt and Capital Construction & Equipment

Total Outstanding Bonded Debt	\$212,614,463
Average Annual Percentage Interest Rate on Debt	4.5%
Amount Raised from Most Recent Bond	\$163,000,000
Amount Spent on New Buildings During Last 2 Years	\$59,382,173

Accreditation

Accreditation is Colorado's primary accountability system, incorporating achievement levels, academic growth, achievement gaps, post-secondary readiness, improvement planning, and compliance. The state accredits districts and districts accredit individual schools.

District Accreditation Status for the 2007-2008 school year:

Voter Approved Funding Changes

Your community did /did not hold an election in November 2006

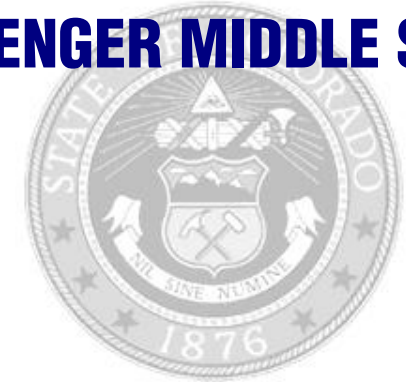
The following items have been approved by voters:

TABOR Override

Bond

Mill Levy Increase

CHALLENGER MIDDLE SCHOOL



ACADEMY 20

<http://www.asd20.org/education/district/district.php?sectionid=1>

School Accountability Report 2007-2008 School Year

School Performance Summary

Overall Academic Performance on State Assessments	Excellent
Academic Growth of Students	Low

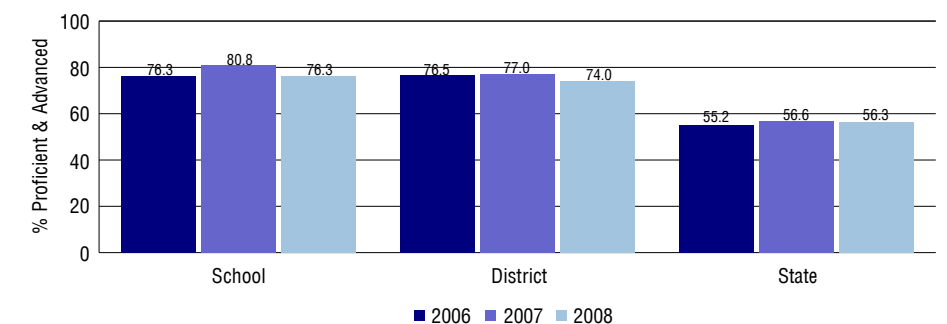
Overall Academic Performance on State Assessments

Each school in the State received a rating of "Excellent", "High", "Average", "Low", or "Unsatisfactory" for student academic performance based on 2007-2008 CSAP and COACT results. The rating is calculated using weighted percentages of each CSAP proficiency level for all content area and grade results for the school, as well as average COACT Reading, Writing, and Math Grade 11 results.

Academic Growth of Students

Each school in the State received a rating of "Low", "Typical", or "High" for student academic growth based on CSAP results. The calculation method is new for 2007-2008. The rating is calculated using student percentile scores matched over two years. More information about the Overall Academic Performance rating and Academic Growth of Students calculations can be found here: http://www.cde.state.co.us/cdeassess/SAR_Info.html.

Percent Proficient and Advanced for Middle Grades for All Content Areas



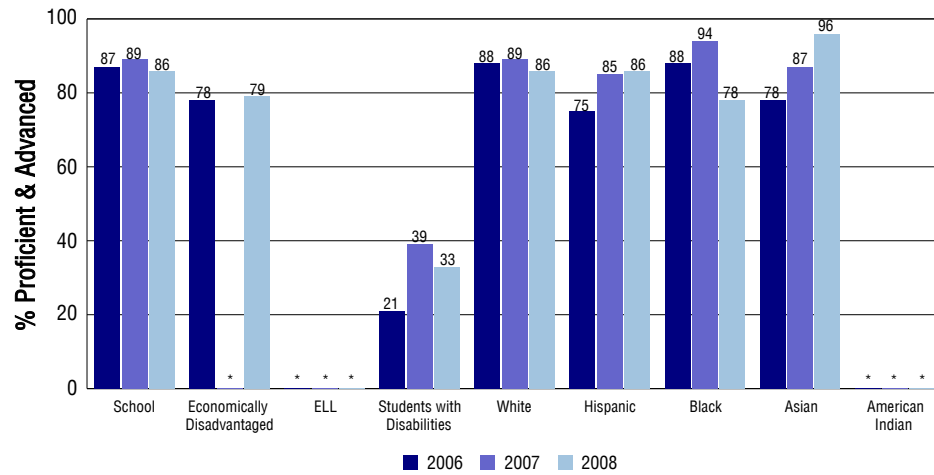
Student Test Scores Used For Calculating Overall Academic Performance

92.4%	Test Scores Counted
0.0%	Test Scores not used due to Language
7.6%	Test Scores not used due to New Student

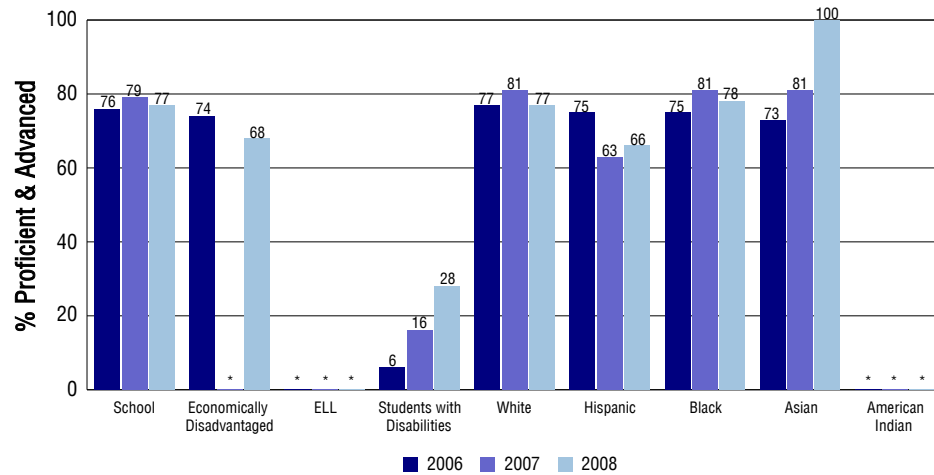
STUDENT PERFORMANCE

These graphs show the percent Proficient and Advanced trends over the past three years for Reading, Writing, and Math. Results are presented for the entire school for all reported grades as well as for different subgroups. Note: * indicates any group with less than 16 student results to be reported.

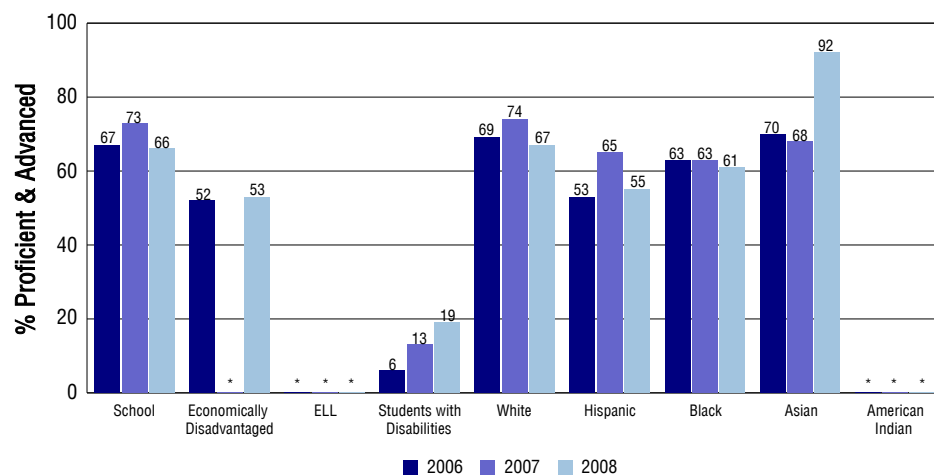
Reading



Writing



Math



SCHOOL INFORMATION

School Pride (as submitted by your district)

- John Erwin School of Excellence recipient recognizing Challenger as one of the top 8% middle schools in the state as measured in performance on the state test.
- A intramural and interscholastic athletic program which is second to none in it's scope, success and participation rate
- Large number of activities available for students
- Caring attitude put forth by all staff members

School Goals (as submitted by your district)

Continue to increase CSAP scores and improve learning for all students. Increased articulation with our feeder elementaries and high school. Increase the teaching of 21st century learning skills especially in the area of technology

No Child Left Behind - Adequate Yearly Progress

Did your school make AYP in reading?	No	Math?	No
How many targets does your school have?	22	Met?	20

Based on this school's academic performance, your child may be eligible for one or more of the following; ask your school if your child qualifies for:

Extra academic instruction either before or after-school, or in the summer
Mentoring

For additional information regarding Adequate Yearly Progress please visit
<http://www.cde.state.co.us/FedPrograms/ayp/index.asp>

How Challenger Middle School Compares To Middle Schools Within A 75-Mile Radius

School	Program Type	Academic Performance	Academic Growth
Mountain Ridge Middle School		High	Low
The Classical Academy Middle School	Charter	Excellent	Typical
Timberview Middle School		High	Low
Discovery Canyon Campus School		Excellent	Typical
Jenkins Middle School(1)		High	High
Russell Middle School(1)		High	High
Eagleview Middle School		Excellent	Typical
Banning Lewis Ranch Academy(2)	Charter	High	Typical
Skyview Middle School(2)		High	Typical
Sabin Middle School(1)		Average	Typical

1 Located in Colorado Springs 11 School District.
2 Located in Falcon 49 School District.

ABOUT OUR STAFF

School Employment

Each year, your district reports to the Colorado Department of Education on the number of adults who work in your school, as well as the type of work they do. Last year, your school employed:

	Your School		District	
	Full Time	Part Time	Full Time	Part Time
Teachers	35	2	1207	174
Paraprofessionals	5	2	297	208
Administrators	2	0	128	5
Other Professionals	3	1	142	68
School Support	11	1	439	195
School Counselors	2	0	44	19
School Librarians	1	0	13	6
Total Staff	64		2880	

Students per Teacher Ratio

	Student Enrollment	Students per Teacher
Grade 6	181	15.3
Grade 7	223	19.7
Grade 8	179	14

Professional Experience of Teachers

	Your School	District
Average years of teaching experience	11	11
Percent of teachers teaching in the subject in which they received their degree	72%	78%
Number of teachers with Masters or Doctoral degrees	23	758
Teachers with 3 years or more of teaching experience	32	1149
Teachers with less than 3 years of teaching experience	5	232
Number of professional development days	4	4

Salaries

	Your School	District	State
Average Teacher Salary	\$46,953	\$44,227	\$47,494
Average Administrator Salary	\$93,350	\$85,591	\$80,444

Principal: Anthony Scott

Number of years as Principal at this school: 6

Number of years as Principal at any school: 7