

SAFETY AND SCHOOL ENVIRONMENT

Non-CSAP Course Offerings

Your School Offers	does	does not
• art.....	<input checked="" type="checkbox"/>	<input type="checkbox"/>
• drama or theater.....	<input type="checkbox"/>	<input checked="" type="checkbox"/>
• music.....	<input checked="" type="checkbox"/>	<input type="checkbox"/>
• physical education.....	<input checked="" type="checkbox"/>	<input type="checkbox"/>
• opportunity for civic or community engagement.....	<input checked="" type="checkbox"/>	<input type="checkbox"/>
• internet safety program.....	<input checked="" type="checkbox"/>	<input type="checkbox"/>
• International Baccalaureate.....	<input type="checkbox"/>	<input checked="" type="checkbox"/>
• extracurricular activities.....	<input type="checkbox"/>	<input checked="" type="checkbox"/>
• athletics.....	<input checked="" type="checkbox"/>	<input type="checkbox"/>
• preschool program.....	<input type="checkbox"/>	<input checked="" type="checkbox"/>
• full-day kindergarten program.....	<input type="checkbox"/>	<input checked="" type="checkbox"/>
• before-and-after-school care program.....	<input type="checkbox"/>	<input checked="" type="checkbox"/>

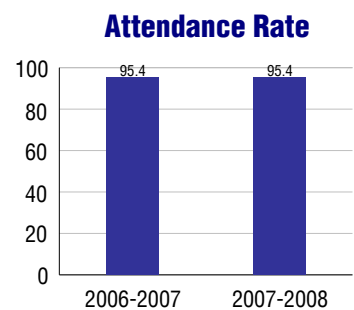
Safety and Discipline

Safe schools are a top priority for parents, teachers, and communities. Your school safety and discipline record for the 2007-2008 school year is:

Type of Incident	Number of Incidents Reported	Percent of Total Incidents
Substance Abuse - Drugs		
Substance Abuse - Alcohol		
Substance Abuse - Tobacco		
Felony Assaults		
Fights		
Possession of Dangerous Weapons		
Other Violations Code of Conduct		

Student Attendance and School Calendar

2007-2008	Your School
Enrollment	891
Average Daily Attendance	850
Student Dropouts	N/A



Student Information Over Time

	2005-2006	2006-2007	2007-2008
Student Enrollment Stability	94.8%	95.6%	97.5%
Students Eligible for Free and Reduced Lunch	16.8 %	21.4 %	21.7 %

For more information and further details about this report, visit www.state.co.us/schools
 Colorado Department of Education, 201 East Colfax Ave. Denver, CO 80203
Cheyenne Mountain Charter Academy
 1020/1582/E
 1832 South Wahsatch . Colorado Springs, CO 80906 . 719-471-1999
 10/20/2008

DISTRICT TAXPAYER'S REPORT

Sources of School District Revenue 2007

Local Tax Contribution	\$18,455,056
State Tax Contribution	16,117,652
Federal Grants	1,287,076
State Grants	530,812
Private/Partnership Grants	31,595
Other Discretionary Income	4,727,176
Total District Operating Revenue	\$41,149,367
Long Term Debt Proceeds	0
Total District Revenue	\$41,149,367
Total District Operating Revenue Per Pupil =	\$9,122
Total District Revenue Per Pupil (Including Long Term Debt) =	\$9,122
District Per Pupil Operating Revenue =	\$5,687
State Average Per Pupil Operating Revenue =	\$6,080

District Use of Funds 2007

Instructional & Instructional Support	\$25,471,292
Administration	2,701,523
Building & Facilities Maintenance	3,764,094
Operational Expenditures	1,372,719
Debt Service	4,603,932
Other Expenditures	930,282
Total District Operating Expenditures	\$38,843,842
Capital Expenditures	1,521,753
Total District Use of Funds	\$40,365,595

District Debt and Capital Construction & Equipment

Total Outstanding Bonded Debt	\$33,311,120
Average Annual Percentage Interest Rate on Debt	4.68%
Amount Raised from Most Recent Bond	\$13,750,000
Amount Spent on New Buildings During Last 2 Years	\$1,802,519

Accreditation

Accreditation is Colorado's primary accountability system, incorporating achievement levels, academic growth, achievement gaps, post-secondary readiness, improvement planning, and compliance. The state accredits districts and districts accredit individual schools.

District Accreditation Status for the 2007-2008 school year:

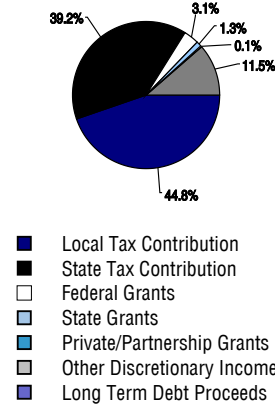
Voter Approved Funding Changes

Your community did /did not hold an election in November 2006

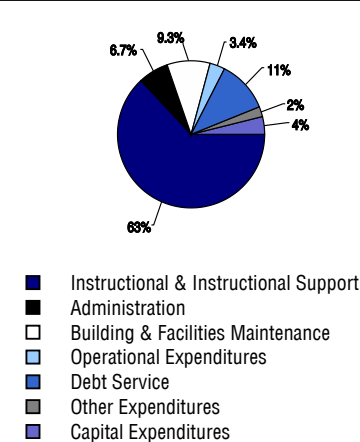
The following items have been approved by voters:

- TABOR Override Bond Mill Levy Increase

District Source of Funds 2007



District Use of Funds 2007



CHEYENNE MOUNTAIN CHARTER



1 - 5
CHEYENNE MOUNTAIN 12
 Charter

<http://www.cmsd.k12.co.us/>
School Accountability Report
2007-2008 School Year

School Performance Summary

Overall Academic Performance on State Assessments **Excellent**

Academic Growth of Students **Typical**

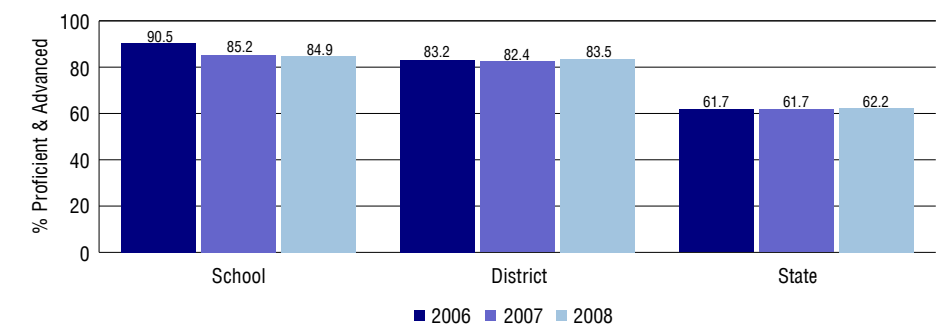
Overall Academic Performance on State Assessments

Each school in the State received a rating of "Excellent", "High", "Average", "Low", or "Unsatisfactory" for student academic performance based on 2007-2008 CSAP and COACT results. The rating is calculated using weighted percentages of each CSAP proficiency level for all content area and grade results for the school, as well as average COACT Reading, Writing, and Math Grade 11 results.

Academic Growth of Students

Each school in the State received a rating of "Low", "Typical", or "High" for student academic growth based on CSAP results. The calculation method is new for 2007-2008. The rating is calculated using student percentile scores matched over two years. More information about the Overall Academic Performance rating and Academic Growth of Students calculations can be found here: http://www.cde.state.co.us/cdeassess/SAR_Info.html.

Percent Proficient and Advanced for Elementary Grades for All Content Areas



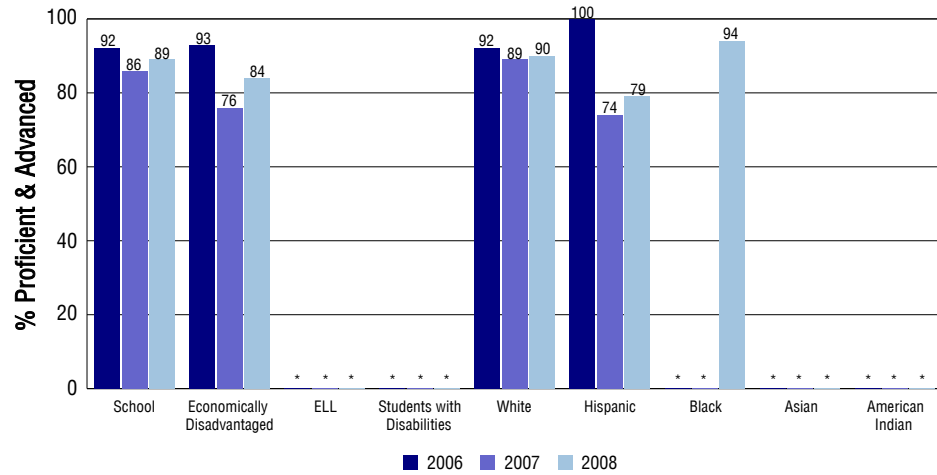
Student Test Scores Used For Calculating Overall Academic Performance

99.6%	Test Scores Counted
0.4%	Test Scores not used due to Language
0.0%	Test Scores not used due to New Student

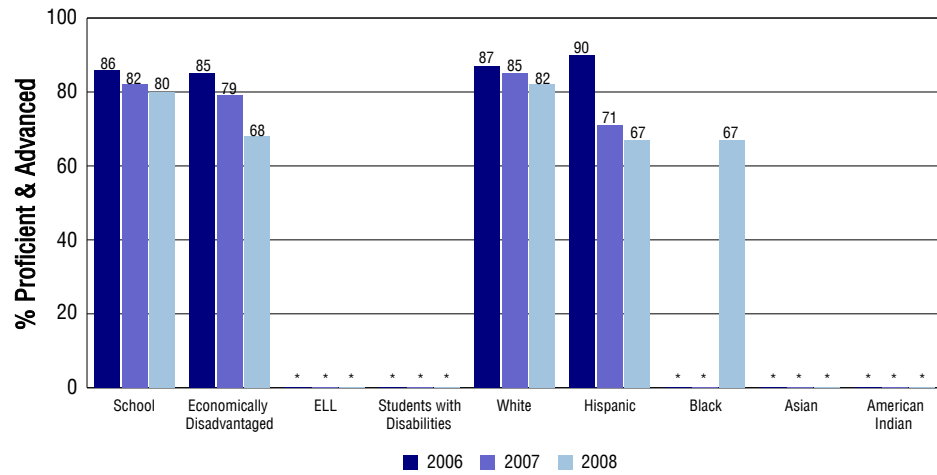
STUDENT PERFORMANCE

These graphs show the percent Proficient and Advanced trends over the past three years for Reading, Writing, and Math. Results are presented for the entire school for all reported grades as well as for different subgroups. Note: * indicates any group with less than 16 student results to be reported.

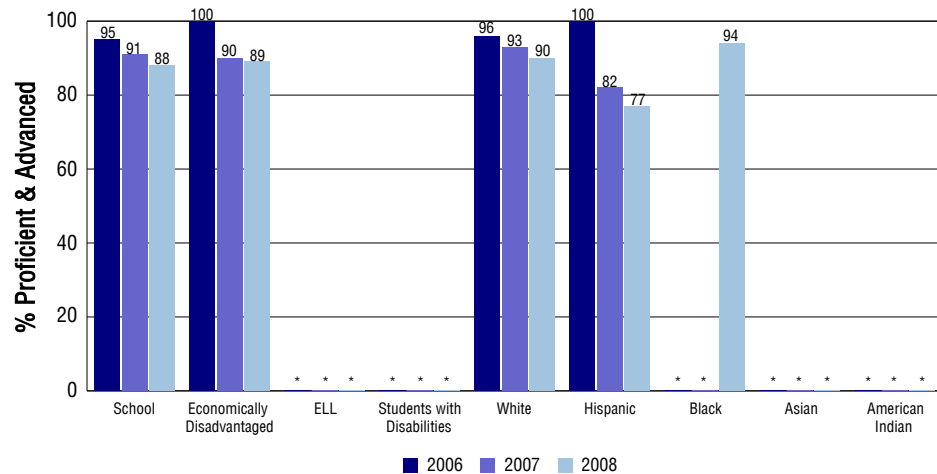
Reading



Writing



Math



SCHOOL INFORMATION

School Pride (as submitted by your district)

- RIGOROUS ACADEMICS AND EMPHASIS ON CHARACTER
- PARENTAL SATISFACTION
- COMMITMENT TO EXCELLENCE IN ALL AREAS
- ALL STUDENTS ARE GIVEN THE OPPORTUNITY TO MEET THEIR ACADEMIC POTENTIAL

School Goals (as submitted by your district)

ALL STUDENTS SUCCEED IN EVERY CLASS AND ARE PLACED IN HOMOGENEOUS ACHIEVEMENT LEVEL GROUPS IN READING, MATH, AND SPELLING. ONSITE COACHING OF ALL STAFF MEMBERS PROMOTES EXCELLENCE IN TEACHING.

No Child Left Behind - Adequate Yearly Progress

Did your school make AYP in reading? Yes Math? Yes
 How many targets does your school have? 24 Met? 24

Based on this school's academic performance, your child may be eligible for one or more of the following; ask your school if your child qualifies for:

Extra academic instruction either before or after-school, or in the summer
 Mentoring

For additional information regarding Adequate Yearly Progress please visit
<http://www.cde.state.co.us/FedPrograms/ayp/index.asp>

How Cheyenne Mountain Charter Academy Compares To Elementary Schools Within A 75-Mile Radius

School	Program Type	Academic Performance	Academic Growth
Ivywild Elementary School(1)		Average	Typical
21st Century Charter School(2)	Charter	Low	Low
Stratton Meadows Elementary School(3)		Average	Typical
Hunt Elementary School(1)		Average	Typical
Chamberlin Elementary School(3)		Average	Typical
Adams Elementary School(1)		Average	Typical
Washington Elementary School(1)		Average	Typical
Columbia Elementary School(1)		Average	Typical
Skyway Park Elementary School		High	Typical
Canon Elementary School		Excellent	Typical

1 Located in Colorado Springs 11 School District.
 2 Located in Charter School Institute School District.
 3 Located in Harrison 2 School District.

ABOUT OUR STAFF

School Employment

Each year, your district reports to the Colorado Department of Education on the number of adults who work in your school, as well as the type of work they do. Last year, your school employed:

	Your School		District	
	Full Time	Part Time	Full Time	Part Time
Teachers	35	14	294	29
Paraprofessionals	34	4	64	35
Administrators	4	0	22	2
Other Professionals	2	2	25	6
School Support	7	3	51	41
School Counselors	0	1	13	1
School Librarians	0	0	8	0
Total Staff	106		585	

Students per Teacher Ratio

	Student Enrollment	Students per Teacher
Grade 1	120	22.1
Grade 2	117	18
Grade 3	126	37.5
Grade 4	102	25.2
Grade 5	93	22.9

Professional Experience of Teachers

	Your School	District
Average years of teaching experience	5	11
Percent of teachers teaching in the subject in which they received their degree	N/A	N/A
Number of teachers with Masters or Doctoral degrees	12	189
Teachers with 3 years or more of teaching experience	34	261
Teachers with less than 3 years of teaching experience	15	62
Number of professional development days	5	5

Salaries

	Your School	District	State
Average Teacher Salary	\$32,046	\$44,388	\$47,494
Average Administrator Salary	\$54,376	\$87,287	\$80,444

Principal: Alexander Marquez

Number of years as Principal at this school: 2

Number of years as Principal at any school: 2