

SAFETY AND SCHOOL ENVIRONMENT

Non-CSAP Course Offerings

Your School Offers	does	does not
• art.....	<input checked="" type="checkbox"/>	<input type="checkbox"/>
• drama or theater.....	<input type="checkbox"/>	<input checked="" type="checkbox"/>
• music.....	<input checked="" type="checkbox"/>	<input type="checkbox"/>
• physical education.....	<input checked="" type="checkbox"/>	<input type="checkbox"/>
• opportunity for civic or community engagement.....	<input checked="" type="checkbox"/>	<input type="checkbox"/>
• internet safety program.....	<input checked="" type="checkbox"/>	<input type="checkbox"/>
• International Baccalaureate.....	<input type="checkbox"/>	<input checked="" type="checkbox"/>
• extracurricular activities.....	<input type="checkbox"/>	<input checked="" type="checkbox"/>
• athletics.....	<input checked="" type="checkbox"/>	<input type="checkbox"/>
• career and technical education.....	<input type="checkbox"/>	<input checked="" type="checkbox"/>
• advanced placement.....	<input type="checkbox"/>	<input checked="" type="checkbox"/>
• honors.....	<input type="checkbox"/>	<input checked="" type="checkbox"/>

Safety and Discipline

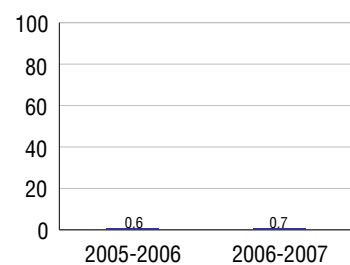
Safe schools are a top priority for parents, teachers, and communities. Your school safety and discipline record for the 2007-2008 school year is:

Type of Incident	Number of Incidents Reported	Percent of Total Incidents
Substance Abuse - Drugs	11	19.6%
Substance Abuse - Alcohol	5	8.9%
Substance Abuse - Tobacco	4	7.1%
Felony Assaults		
Fights	2	3.6%
Possession of Dangerous Weapons	1	1.8%
Other Violations Code of Conduct	33	58.9%

Student Attendance and School Calendar

2007-2008	Your School
Enrollment	1,368
Average Daily Attendance	1,327
Student Dropouts	0.7%

Dropout Rate



Student Information Over Time

	2005-2006	2006-2007	2007-2008
Student Enrollment Stability	97.4%	97.3%	98.1%
Students Eligible for Free and Reduced Lunch	0.7 %	0.0 %	0.1 %

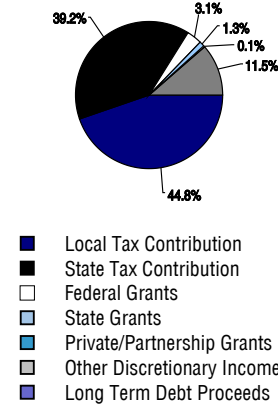
For more information and further details about this report, visit www.state.co.us/schools
 Colorado Department of Education, 201 East Colfax Ave. Denver, CO 80203
Cheyenne Mountain High School
 1020/1590/H
 1200 Cresta Road . Colorado Springs, CO 80906 . 719-475-6110
 10/20/2008

DISTRICT TAXPAYER'S REPORT

Sources of School District Revenue 2007

Local Tax Contribution	\$18,455,056
State Tax Contribution	16,117,652
Federal Grants	1,287,076
State Grants	530,812
Private/Partnership Grants	31,595
Other Discretionary Income	4,727,176
Total District Operating Revenue	\$41,149,367
Long Term Debt Proceeds	0
Total District Revenue	\$41,149,367
Total District Operating Revenue Per Pupil =	\$9,122
Total District Revenue Per Pupil (Including Long Term Debt) =	\$9,122
District Per Pupil Operating Revenue =	\$5,687
State Average Per Pupil Operating Revenue =	\$6,080

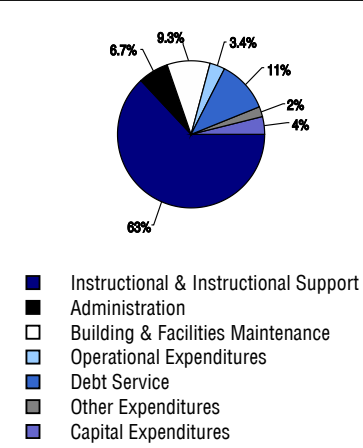
District Source of Funds 2007



District Use of Funds 2007

Instructional & Instructional Support	\$25,471,292
Administration	2,701,523
Building & Facilities Maintenance	3,764,094
Operational Expenditures	1,372,719
Debt Service	4,603,932
Other Expenditures	930,282
Total District Operating Expenditures	\$38,843,842
Capital Expenditures	1,521,753
Total District Use of Funds	\$40,365,595

District Use of Funds 2007



District Debt and Capital Construction & Equipment

Total Outstanding Bonded Debt	\$33,311,120
Average Annual Percentage Interest Rate on Debt	4.68%
Amount Raised from Most Recent Bond	\$13,750,000
Amount Spent on New Buildings During Last 2 Years	\$1,802,519

Accreditation

Accreditation is Colorado's primary accountability system, incorporating achievement levels, academic growth, achievement gaps, post-secondary readiness, improvement planning, and compliance. The state accredits districts and districts accredit individual schools.

District Accreditation Status for the 2007-2008 school year:

Voter Approved Funding Changes

Your community did /did not hold an election in November 2006

The following items have been approved by voters:

- TABOR Override
- Bond
- Mill Levy Increase

CHEYENNE MOUNTAIN HIGH SCHOOL



CHEYENNE MOUNTAIN 12

<http://www.cmsd.k12.co.us/>
School Accountability Report
2007-2008 School Year

School Performance Summary

Overall Academic Performance on State Assessments **Excellent**

Academic Growth of Students **High**

Winner of a John Irwin School of Excellence for the 2007-2008 School Year

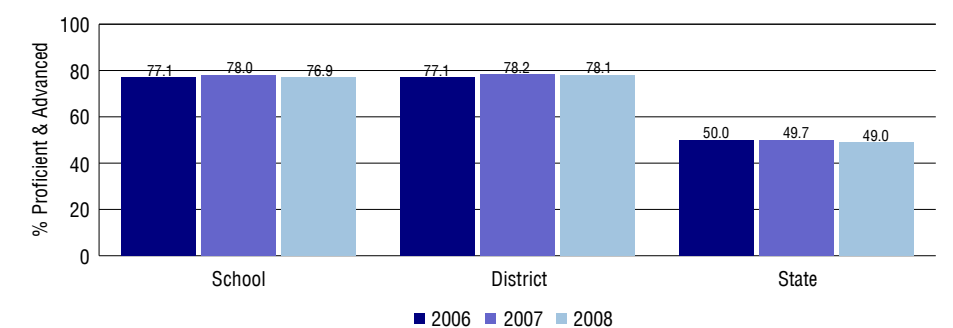
Overall Academic Performance on State Assessments

Each school in the State received a rating of "Excellent", "High", "Average", "Low", or "Unsatisfactory" for student academic performance based on 2007-2008 CSAP and COACT results. The rating is calculated using weighted percentages of each CSAP proficiency level for all content area and grade results for the school, as well as average COACT Reading, Writing, and Math Grade 11 results.

Academic Growth of Students

Each school in the State received a rating of "Low", "Typical", or "High" for student academic growth based on CSAP results. The calculation method is new for 2007-2008. The rating is calculated using student percentile scores matched over two years. More information about the Overall Academic Performance rating and Academic Growth of Students calculations can be found here: http://www.cde.state.co.us/cdeassess/SAR_Info.html.

Percent Proficient and Advanced for High Grades for All Content Areas



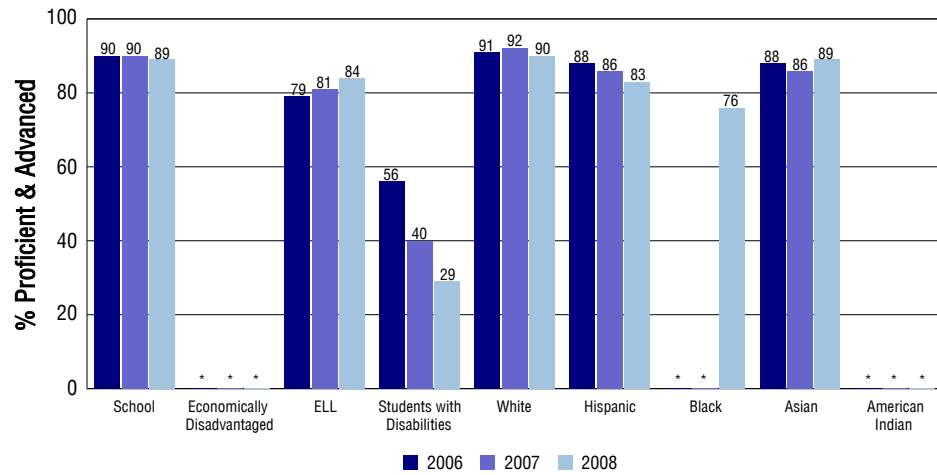
Student Test Scores Used For Calculating Overall Academic Performance

97.2%	Test Scores Counted
0.3%	Test Scores not used due to Language
2.6%	Test Scores not used due to New Student

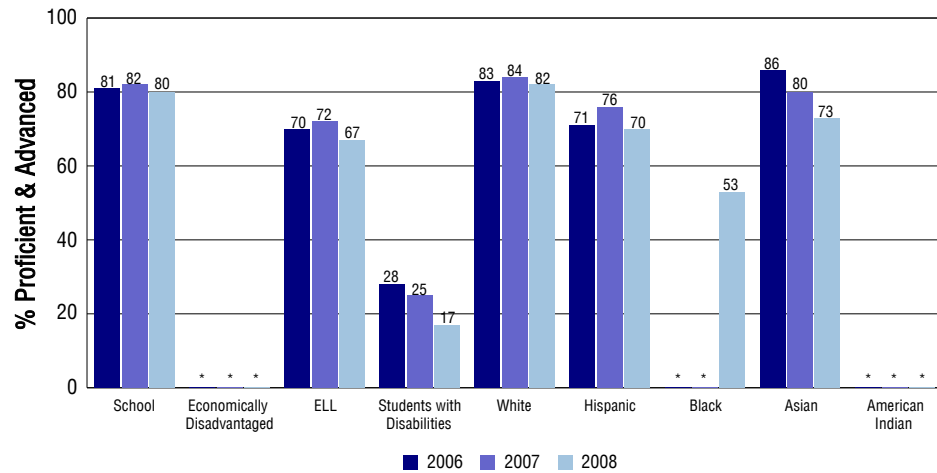
STUDENT PERFORMANCE

These graphs show the percent Proficient and Advanced trends over the past three years for Reading, Writing, and Math. Results are presented for the entire school for all reported grades as well as for different subgroups. Note: * indicates any group with less than 16 student results to be reported.

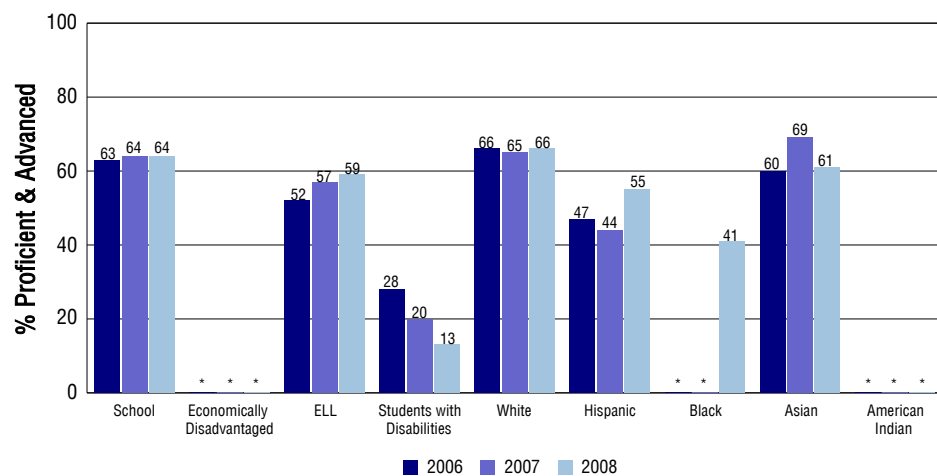
Reading



Writing



Math



SCHOOL INFORMATION

School Pride (as submitted by your district)

- RANKED BY THE COLORADO DEPARTMENT OF EDUCATION AS THE HIGHEST ACHIEVING SCHOOL DISTRICT IN THE STATE.
- OUTSTANDING PARENTAL AND COMMUNITY SUPPORT
- COMMITMENT TO EXCELLENCE IN ACADEMICS, ARTS, AND ATHLETICS
- STUDENTS WHO ARE EAGER AND READY TO LEARN.

School Goals (as submitted by your district)

CLEARLY DEFINED STUDENT LEARNING OUTCOMES; FULLY ARTICULATED AND ALIGNED PK/12 CURRICULUM; EFFECTIVE USE OF STUDENT ASSESSMENT DATA; INHERENT CULTURE OF COLLABORATION AND INQUIRY ABOUT STUDENT ACHIEVEMENT.

No Child Left Behind - Adequate Yearly Progress

Did your school make AYP in reading?	Yes	Math?	Yes
Did your school make the graduation rate targets?	Yes		
How many targets does your school have?	22	Met?	22

Based on this school's academic performance, your child may be eligible for one or more of the following; ask your school if your child qualifies for:

Extra academic instruction either before or after-school, or in the summer
Mentoring

For additional information regarding Adequate Yearly Progress please visit
<http://www.cde.state.co.us/FedPrograms/ayp/index.asp>

How Cheyenne Mountain High School Compares To High Schools Within A 75-Mile Radius

School	Program Type	Academic Performance	Academic Growth
The Vanguard School	Charter	Excellent	High
21st Century Charter School(1)	Charter	Average	Typical
Palmer High School(2)		High	High
Harrison High School(3)		Low	Typical
Manitou Springs High School(4)		High	Low
Coronado High School(2)		High	Typical
Shivers Academy Charter School(3)	Charter	No Rating	No Rating
Wasson High School(2)		Average	Typical
Sierra High School(3)		Low	Typical
Colorado Springs Early Colleges(1)	Charter	High	Typical

1 Located in Charter School Institute School District.
2 Located in Colorado Springs 11 School District.
3 Located in Harrison 2 School District.
4 Located in Manitou Springs 14 School District.

ABOUT OUR STAFF

School Employment

Each year, your district reports to the Colorado Department of Education on the number of adults who work in your school, as well as the type of work they do. Last year, your school employed:

	Your School		District	
	Full Time	Part Time	Full Time	Part Time
Teachers	83	3	294	29
Paraprofessionals	11	0	64	35
Administrators	4	0	22	2
Other Professionals	4	1	25	6
School Support	11	10	51	41
School Counselors	5	0	13	1
School Librarians	1	0	8	0
Total Staff	133		585	

Students per Teacher Ratio

	Student Enrollment	Students per Teacher
Grade 9	339	18.1
Grade 10	344	15.5
Grade 11	347	16.1
Grade 12	338	15.3

Professional Experience of Teachers

	Your School	District
Average years of teaching experience	13	11
Percent of teachers teaching in the subject in which they received their degree	87%	91%
Number of teachers with Masters or Doctoral degrees	64	189
Teachers with 3 years or more of teaching experience	71	261
Teachers with less than 3 years of teaching experience	15	62
Number of professional development days	5	5

Salaries

	Your School	District	State
Average Teacher Salary	\$48,178	\$44,388	\$47,494
Average Administrator Salary	\$96,120	\$87,287	\$80,444

Principal: Paul Martin

Number of years as Principal at this school: 13

Number of years as Principal at any school: 33