

SAFETY AND SCHOOL ENVIRONMENT

Non-CSAP Course Offerings

Your School Offers	does	does not
• art.....	<input checked="" type="checkbox"/>	<input type="checkbox"/>
• drama or theater.....	<input checked="" type="checkbox"/>	<input type="checkbox"/>
• music.....	<input checked="" type="checkbox"/>	<input type="checkbox"/>
• physical education.....	<input checked="" type="checkbox"/>	<input type="checkbox"/>
• opportunity for civic or community engagement.....	<input checked="" type="checkbox"/>	<input type="checkbox"/>
• internet safety program.....	<input type="checkbox"/>	<input checked="" type="checkbox"/>
• International Baccalaureate.....	<input type="checkbox"/>	<input checked="" type="checkbox"/>
• extracurricular activities.....	<input checked="" type="checkbox"/>	<input type="checkbox"/>
• athletics.....	<input checked="" type="checkbox"/>	<input type="checkbox"/>
• preschool program.....	<input checked="" type="checkbox"/>	<input type="checkbox"/>
• full-day kindergarten program.....	<input checked="" type="checkbox"/>	<input type="checkbox"/>
• before-and-after-school care program.....	<input checked="" type="checkbox"/>	<input type="checkbox"/>

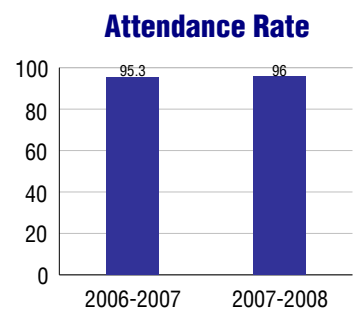
Safety and Discipline

Safe schools are a top priority for parents, teachers, and communities. Your school safety and discipline record for the 2007-2008 school year is:

Type of Incident	Number of Incidents Reported	Percent of Total Incidents
Substance Abuse - Drugs		
Substance Abuse - Alcohol		
Substance Abuse - Tobacco		
Felony Assaults		
Fights		
Possession of Dangerous Weapons		
Other Violations Code of Conduct		

Student Attendance and School Calendar

2007-2008	Your School
Enrollment	427
Average Daily Attendance	410
Student Dropouts	N/A



Student Information Over Time

	2005-2006	2006-2007	2007-2008
Student Enrollment Stability	96.8%	97.8%	95.8%
Students Eligible for Free and Reduced Lunch	8.0 %	9.9 %	14.1 %

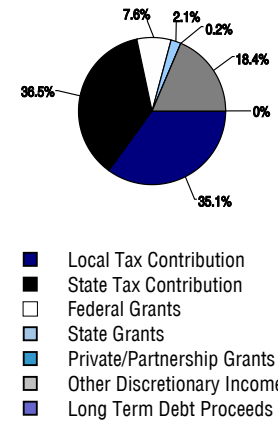
For more information and further details about this report, visit www.state.co.us/schools
 Colorado Department of Education, 201 East Colfax Ave. Denver, CO 80203
Chipeta Elementary School
 1010/1613/E
 2340 Ramsgate Terrace . Colorado Springs, CO 80919 . 719-328-5500
 10/20/2008

DISTRICT TAXPAYER'S REPORT

Sources of School District Revenue 2007

Local Tax Contribution	\$113,583,627
State Tax Contribution	118,186,780
Federal Grants	24,713,529
State Grants	6,766,930
Private/Partnership Grants	620,835
Other Discretionary Income	59,748,276
Total District Operating Revenue	\$323,619,977
Long Term Debt Proceeds	226,133
Total District Revenue	\$323,846,110
Total District Operating Revenue Per Pupil =	\$11,281
Total District Revenue Per Pupil (Including Long Term Debt) =	\$11,289
District Per Pupil Operating Revenue =	\$5,934
State Average Per Pupil Operating Revenue =	\$6,080

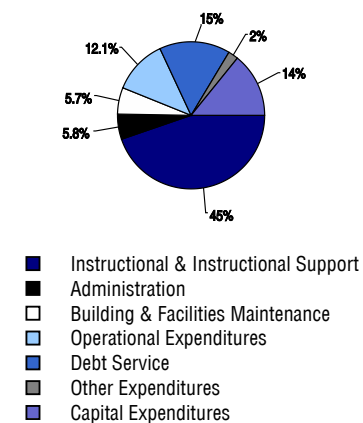
District Source of Funds 2007



District Use of Funds 2007

Instructional & Instructional Support	\$182,554,407
Administration	23,654,864
Building & Facilities Maintenance	23,340,275
Operational Expenditures	49,414,159
Debt Service	63,437,095
Other Expenditures	8,971,654
Total District Operating Expenditures	\$351,372,454
Capital Expenditures	58,096,235
Total District Use of Funds	\$409,468,689

District Use of Funds 2007



District Debt and Capital Construction & Equipment

Total Outstanding Bonded Debt	\$205,519,973
Average Annual Percentage Interest Rate on Debt	5.28%
Amount Raised from Most Recent Bond	\$131,700,000
Amount Spent on New Buildings During Last 2 Years	\$31,201,211

Accreditation

Accreditation is Colorado's primary accountability system, incorporating achievement levels, academic growth, achievement gaps, post-secondary readiness, improvement planning, and compliance. The state accredits districts and districts accredit individual schools.

District Accreditation Status for the 2007-2008 school year:

Voter Approved Funding Changes

Your community did /did not hold an election in November 2006

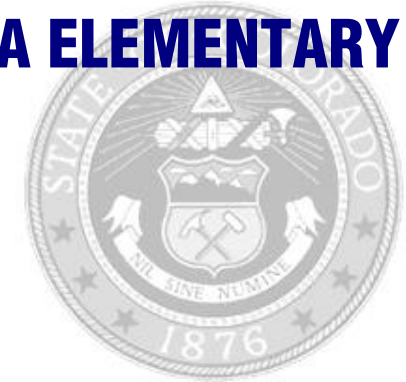
The following items have been approved by voters:

TABOR Override

Bond

Mill Levy Increase

CHIPETA ELEMENTARY SCHOOL



COLORADO SPRINGS 11

<http://www.cssd11.k12.co.us/>
School Accountability Report
2007-2008 School Year

School Performance Summary

Overall Academic Performance on State Assessments **Excellent**

Academic Growth of Students **High**

Winner of a John Irwin School of Excellence for the 2007-2008 School Year

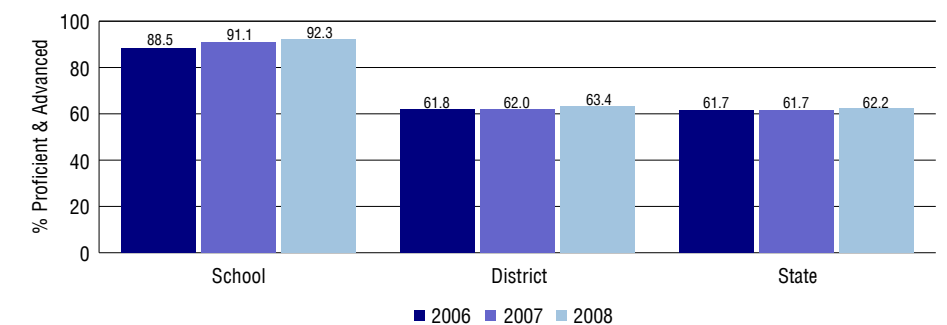
Overall Academic Performance on State Assessments

Each school in the State received a rating of "Excellent", "High", "Average", "Low", or "Unsatisfactory" for student academic performance based on 2007-2008 CSAP and COACT results. The rating is calculated using weighted percentages of each CSAP proficiency level for all content area and grade results for the school, as well as average COACT Reading, Writing, and Math Grade 11 results.

Academic Growth of Students

Each school in the State received a rating of "Low", "Typical", or "High" for student academic growth based on CSAP results. The calculation method is new for 2007-2008. The rating is calculated using student percentile scores matched over two years. More information about the Overall Academic Performance rating and Academic Growth of Students calculations can be found here: http://www.cde.state.co.us/cdeassess/SAR_Info.html.

Percent Proficient and Advanced for Elementary Grades for All Content Areas



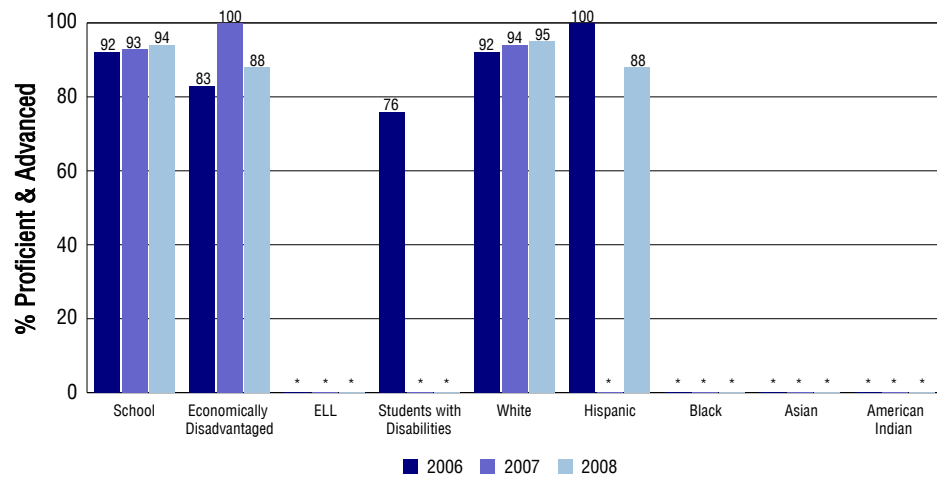
Student Test Scores Used For Calculating Overall Academic Performance

94.5%	Test Scores Counted
2.4%	Test Scores not used due to Language
3.0%	Test Scores not used due to New Student

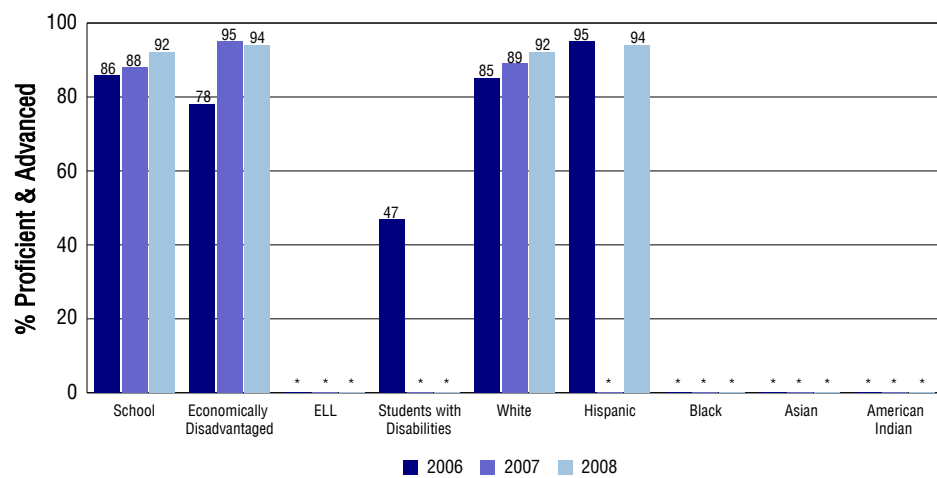
STUDENT PERFORMANCE

These graphs show the percent Proficient and Advanced trends over the past three years for Reading, Writing, and Math. Results are presented for the entire school for all reported grades as well as for different subgroups. Note: * indicates any group with less than 16 student results to be reported.

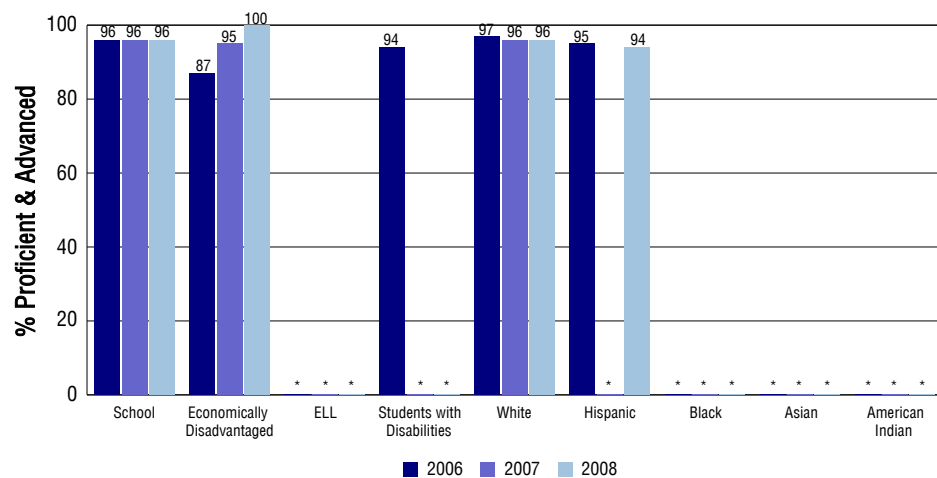
Reading



Writing



Math



SCHOOL INFORMATION

School Pride (as submitted by your district)

- Ranked 13th of 836 Colorado Elementary Schools and 1st in Distric 11 on CSAP.
- Named a John Irwin School of Excellence since 2002
- District 11 Exemplary Response to Intervention (Rtl) site.
- Largest total PTA membership and volunteer rate in El Paso County

School Goals (as submitted by your district)

Achieve 95% proficient & advanced in reading/writing and math for Grades 3-5

No Child Left Behind - Adequate Yearly Progress

Did your school make AYP in reading? Yes Math? Yes
 How many targets does your school have? 12 Met? 12

Based on this school's academic performance, your child may be eligible for one or more of the following; ask your school if your child qualifies for:

Extra academic instruction either before or after-school, or in the summer
 Mentoring

For additional information regarding Adequate Yearly Progress please visit
<http://www.cde.state.co.us/FedPrograms/ayp/index.asp>

How Chipeta Elementary School Compares To Elementary Schools Within A 75-Mile Radius

School	Program Type	Academic Performance	Academic Growth
Trailblazer Elementary School		High	Low
Jackson Elementary School		High	Typical
Foothills Elementary School(1)		High	Typical
Woodmen-Roberts Elementary School(1)		Excellent	Typical
Rockrimmon Elementary School(1)		High	Typical
Cesar Chavez Colorado Springs - Central(2)	Charter	Average	Low
Howbert Elementary School		Excellent	High
Pike Elementary School		High	High
Bates Elementary School		High	Typical
Lincoln Elementary School		Average	Typical

1 Located in Academy 20 School District.

2 Located in Charter School Institute School District.

ABOUT OUR STAFF

School Employment

Each year, your district reports to the Colorado Department of Education on the number of adults who work in your school, as well as the type of work they do. Last year, your school employed:

	Your School		District	
	Full Time	Part Time	Full Time	Part Time
Teachers	23	2	1790	87
Paraprofessionals	5	0	580	35
Administrators	1	1	157	9
Other Professionals	3	2	260	83
School Support	5	1	678	314
School Counselors	0	0	41	4
School Librarians	1	0	58	4
Total Staff	44		4082	

Students per Teacher Ratio

	Student Enrollment	Students per Teacher
Grade 1	67	17.1
Grade 2	66	16.9
Grade 3	72	18.4
Grade 4	63	20.9
Grade 5	66	16.4

Professional Experience of Teachers

	Your School	District
Average years of teaching experience	10	9
Percent of teachers teaching in the subject in which they received their degree	N/A	N/A
Number of teachers with Masters or Doctoral degrees	20	1100
Teachers with 3 years or more of teaching experience	19	1314
Teachers with less than 3 years of teaching experience	6	563
Number of professional development days	5	8

Salaries

	Your School	District	State
Average Teacher Salary	\$50,283	\$46,064	\$47,494
Average Administrator Salary	\$80,529	\$79,793	\$80,444

Principal: Lori Butler

Number of years as Principal at this school: 4

Number of years as Principal at any school: 7