

SAFETY AND SCHOOL ENVIRONMENT

Non-CSAP Course Offerings

Your School Offers	does	does not
• art.....	<input checked="" type="checkbox"/>	<input type="checkbox"/>
• drama or theater.....	<input checked="" type="checkbox"/>	<input type="checkbox"/>
• music.....	<input checked="" type="checkbox"/>	<input type="checkbox"/>
• physical education.....	<input checked="" type="checkbox"/>	<input type="checkbox"/>
• opportunity for civic or community engagement.....	<input checked="" type="checkbox"/>	<input type="checkbox"/>
• internet safety program.....	<input checked="" type="checkbox"/>	<input type="checkbox"/>
• International Baccalaureate.....	<input type="checkbox"/>	<input checked="" type="checkbox"/>
• extracurricular activities.....	<input checked="" type="checkbox"/>	<input type="checkbox"/>
• athletics.....	<input checked="" type="checkbox"/>	<input type="checkbox"/>
• career and technical education.....	<input checked="" type="checkbox"/>	<input type="checkbox"/>
• advanced placement.....	<input checked="" type="checkbox"/>	<input type="checkbox"/>
• honors.....	<input checked="" type="checkbox"/>	<input type="checkbox"/>

Safety and Discipline

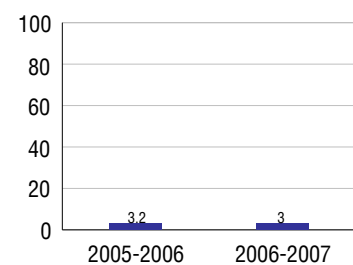
Safe schools are a top priority for parents, teachers, and communities. Your school safety and discipline record for the 2007-2008 school year is:

Type of Incident	Number of Incidents Reported	Percent of Total Incidents
Substance Abuse - Drugs	12	1.7%
Substance Abuse - Alcohol	4	0.6%
Substance Abuse - Tobacco	70	9.9%
Felony Assaults	1	0.1%
Fights		
Possession of Dangerous Weapons		
Other Violations Code of Conduct	623	87.7%

Student Attendance and School Calendar

2007-2008	Your School
Enrollment	1,492
Average Daily Attendance	1,350
Student Dropouts	3.0%

Dropout Rate



Student Information Over Time

	2005-2006	2006-2007	2007-2008
Student Enrollment Stability	91.2%	91.4%	92.9%
Students Eligible for Free and Reduced Lunch	21.2 %	24.4 %	26.0 %

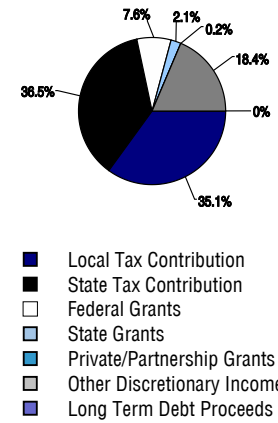
For more information and further details about this report, visit www.state.co.us/schools
 Colorado Department of Education, 201 East Colfax Ave. Denver, CO 80203
Coronado High School
 1010/1870/H
 1590 West Fillmore Street . Colorado Springs, CO 80904 . 719-328-3600
 10/20/2008

DISTRICT TAXPAYER'S REPORT

Sources of School District Revenue 2007

Local Tax Contribution	\$113,583,627
State Tax Contribution	118,186,780
Federal Grants	24,713,529
State Grants	6,766,930
Private/Partnership Grants	620,835
Other Discretionary Income	59,748,276
Total District Operating Revenue	\$323,619,977
Long Term Debt Proceeds	226,133
Total District Revenue	\$323,846,110
Total District Operating Revenue Per Pupil =	\$11,281
Total District Revenue Per Pupil (Including Long Term Debt) =	\$11,289
District Per Pupil Operating Revenue =	\$5,934
State Average Per Pupil Operating Revenue =	\$6,080

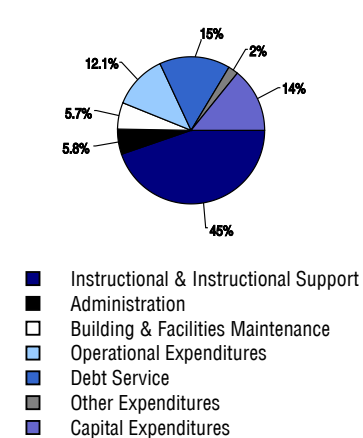
District Source of Funds 2007



District Use of Funds 2007

Instructional & Instructional Support	\$182,554,407
Administration	23,654,864
Building & Facilities Maintenance	23,340,275
Operational Expenditures	49,414,159
Debt Service	63,437,095
Other Expenditures	8,971,654
Total District Operating Expenditures	\$351,372,454
Capital Expenditures	58,096,235
Total District Use of Funds	\$409,468,689

District Use of Funds 2007



District Debt and Capital Construction & Equipment

Total Outstanding Bonded Debt	\$205,519,973
Average Annual Percentage Interest Rate on Debt	5.28%
Amount Raised from Most Recent Bond	\$131,700,000
Amount Spent on New Buildings During Last 2 Years	\$31,201,211

Accreditation

Accreditation is Colorado's primary accountability system, incorporating achievement levels, academic growth, achievement gaps, post-secondary readiness, improvement planning, and compliance. The state accredits districts and districts accredit individual schools.

District Accreditation Status for the 2007-2008 school year:

Voter Approved Funding Changes

Your community did /did not hold an election in November 2006

The following items have been approved by voters:

TABOR Override

Bond

Mill Levy Increase

CORONADO HIGH SCHOOL



COLORADO SPRINGS 11

<http://www.cssd11.k12.co.us/>

**School Accountability Report
2007-2008 School Year**

School Performance Summary

Overall Academic Performance on State Assessments

High

Academic Growth of Students

Typical

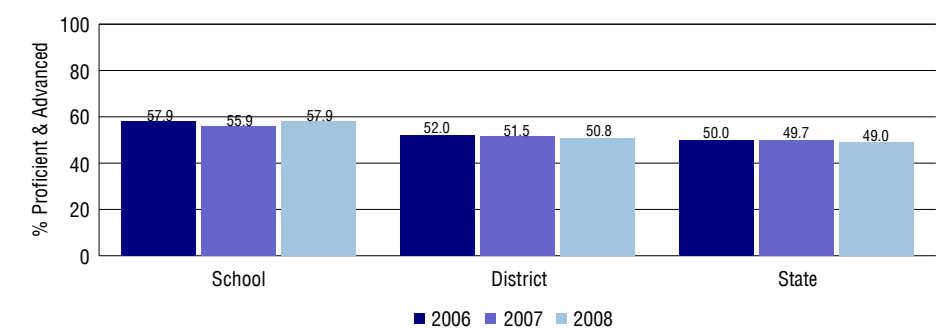
Overall Academic Performance on State Assessments

Each school in the State received a rating of "Excellent", "High", "Average", "Low", or "Unsatisfactory" for student academic performance based on 2007-2008 CSAP and COACT results. The rating is calculated using weighted percentages of each CSAP proficiency level for all content area and grade results for the school, as well as average COACT Reading, Writing, and Math Grade 11 results.

Academic Growth of Students

Each school in the State received a rating of "Low", "Typical", or "High" for student academic growth based on CSAP results. The calculation method is new for 2007-2008. The rating is calculated using student percentile scores matched over two years. More information about the Overall Academic Performance rating and Academic Growth of Students calculations can be found here: http://www.cde.state.co.us/cdeassess/SAR_Info.html.

Percent Proficient and Advanced for High Grades for All Content Areas



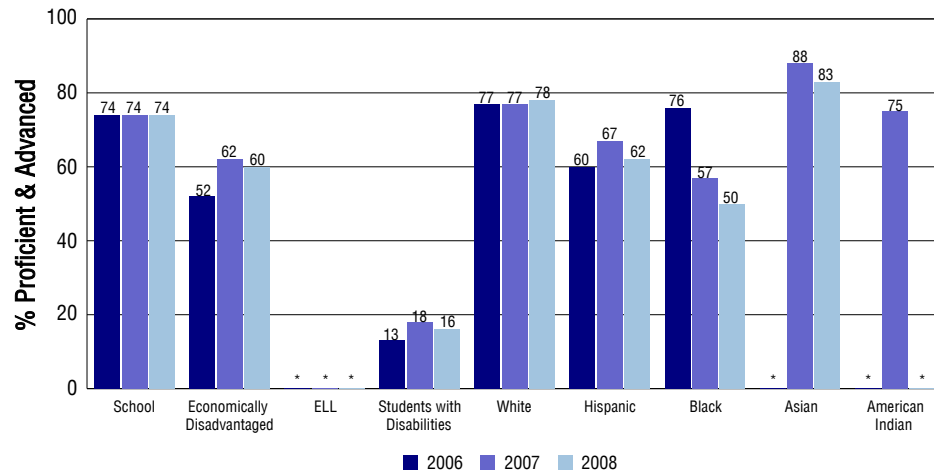
Student Test Scores Used For Calculating Overall Academic Performance

93.9%	Test Scores Counted
0.3%	Test Scores not used due to Language
5.8%	Test Scores not used due to New Student

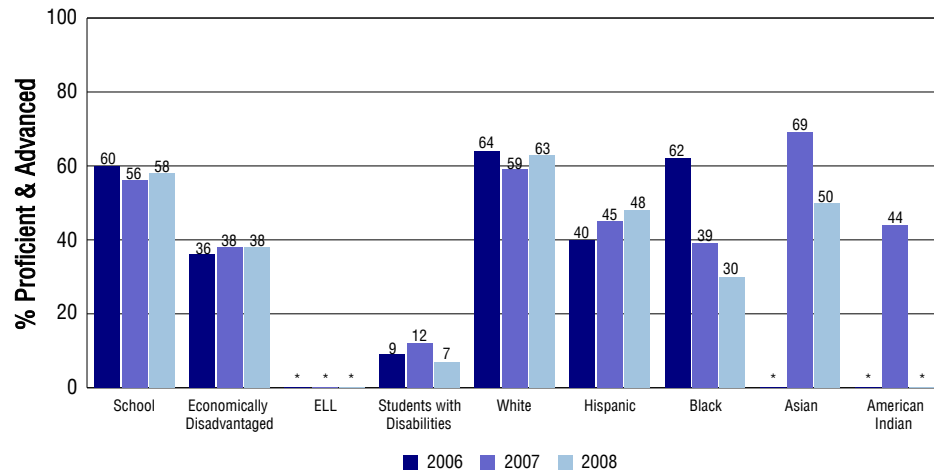
STUDENT PERFORMANCE

These graphs show the percent Proficient and Advanced trends over the past three years for Reading, Writing, and Math. Results are presented for the entire school for all reported grades as well as for different subgroups. Note: * indicates any group with less than 16 student results to be reported.

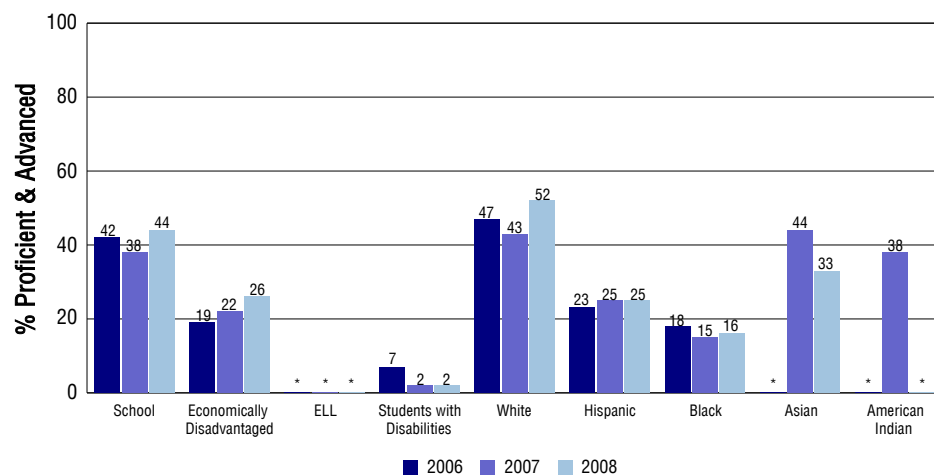
Reading



Writing



Math



SCHOOL INFORMATION

School Pride (as submitted by your district)

- CU Gold Program - Coronado offers one of the strongest early college education programs in the state of Colorado, offering in excess of 60 semester hours of college credit.
- Project Lead the Way - Nationally recognized staff lead a joint venture with area technology businesses and the U.S. Space Foundation to allow students to explore the fields of engineering and engineering technology.
- Outstanding orchestra, band and choir programs. Coronado ranks among the top schools in the state for the number of students placed in all-state and honors groups as well as achieving top ratings at state and national music festivals.

School Goals (as submitted by your district)

parent and community involvement. The PTA at Coronado continues to increase its membership annually and has provided over 5,000 parent volunteer hours to the school this year. The goal at Coronado is to prepare students for the 21st Century. The staff at Coronado creates successful learning outcomes by working together in horizontal teams to align curriculum, close achievement gaps, support students at all levels, analyze data, assess student work and engage in dialogue to create an environment which supports academic achievement for all students.

No Child Left Behind - Adequate Yearly Progress

Did your school make AYP in reading?	No	Math?	No
Did your school make the graduation rate targets?	Yes		
How many targets does your school have?	29	Met?	24

Based on this school's academic performance, your child may be eligible for one or more of the following; ask your school if your child qualifies for:

Extra academic instruction either before or after-school, or in the summer
Mentoring

For additional information regarding Adequate Yearly Progress please visit
<http://www.cde.state.co.us/FedPrograms/ayp/index.asp>

How Coronado High School Compares To High Schools Within A 75-Mile Radius

School	Program Type	Academic Performance	Academic Growth
Colorado Springs Early Colleges(1)	Charter	High	Typical
Manitou Springs High School(2)		High	Low
Civa Charter Academy	Charter, Alternative	Average	Typical
Palmer High School		High	High
21st Century Charter School(1)	Charter	Average	Typical
Wasson High School		Average	Typical
Cheyenne Mountain High School(3)		Excellent	High
The Vanguard School(3)	Charter	Excellent	High
Shivers Academy Charter School(4)	Charter	No Rating	No Rating
Mitchell High School		Average	Typical

1 Located in Charter School Institute School District.

2 Located in Manitou Springs 14 School District.

3 Located in Cheyenne Mountain 12 School District.

4 Located in Harrison 2 School District.

ABOUT OUR STAFF

School Employment

Each year, your district reports to the Colorado Department of Education on the number of adults who work in your school, as well as the type of work they do. Last year, your school employed:

	Your School		District	
	Full Time	Part Time	Full Time	Part Time
Teachers	72	5	1790	87
Paraprofessionals	15	2	580	35
Administrators	4	1	157	9
Other Professionals	3	3	260	83
School Support	23	15	678	314
School Counselors	5	0	41	4
School Librarians	2	0	58	4
Total Staff	150		4082	

Students per Teacher Ratio

	Student Enrollment	Students per Teacher
Grade 9	381	20.4
Grade 10	358	19.2
Grade 11	357	19.1
Grade 12	396	21.2

Professional Experience of Teachers

	Your School	District
Average years of teaching experience	13	9
Percent of teachers teaching in the subject in which they received their degree	74%	66%
Number of teachers with Masters or Doctoral degrees	59	1100
Teachers with 3 years or more of teaching experience	66	1314
Teachers with less than 3 years of teaching experience	11	563
Number of professional development days	4	8

Salaries

	Your School	District	State
Average Teacher Salary	\$52,933	\$46,064	\$47,494
Average Administrator Salary	\$78,916	\$79,793	\$80,444

Principal: Susan Humphrey

Number of years as Principal at this school: 4

Number of years as Principal at any school: 5