

SAFETY AND SCHOOL ENVIRONMENT

Non-CSAP Course Offerings

Your School Offers	does	does not
• art.....	<input checked="" type="checkbox"/>	<input type="checkbox"/>
• drama or theater.....	<input type="checkbox"/>	<input checked="" type="checkbox"/>
• music.....	<input checked="" type="checkbox"/>	<input type="checkbox"/>
• physical education.....	<input checked="" type="checkbox"/>	<input type="checkbox"/>
• opportunity for civic or community engagement.....	<input type="checkbox"/>	<input checked="" type="checkbox"/>
• internet safety program.....	<input checked="" type="checkbox"/>	<input type="checkbox"/>
• International Baccalaureate.....	<input type="checkbox"/>	<input checked="" type="checkbox"/>
• extracurricular activities.....	<input checked="" type="checkbox"/>	<input type="checkbox"/>
• athletics.....	<input type="checkbox"/>	<input checked="" type="checkbox"/>
• preschool program.....	<input type="checkbox"/>	<input checked="" type="checkbox"/>
• full-day kindergarten program.....	<input checked="" type="checkbox"/>	<input type="checkbox"/>
• before-and-after-school care program.....	<input checked="" type="checkbox"/>	<input type="checkbox"/>

Safety and Discipline

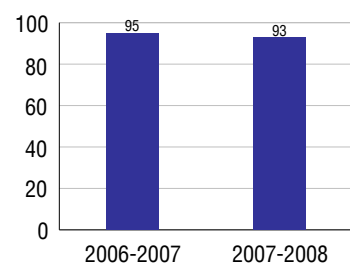
Safe schools are a top priority for parents, teachers, and communities. Your school safety and discipline record for the 2007-2008 school year is:

Type of Incident	Number of Incidents Reported	Percent of Total Incidents
Substance Abuse - Drugs		
Substance Abuse - Alcohol		
Substance Abuse - Tobacco		
Felony Assaults		
Fights		
Possession of Dangerous Weapons	1	4.3%
Other Violations Code of Conduct	22	95.7%

Student Attendance and School Calendar

2007-2008	Your School
Enrollment	433
Average Daily Attendance	403
Student Dropouts	N/A

Attendance Rate



Student Information Over Time

	2005-2006	2006-2007	2007-2008
Student Enrollment Stability	91.8%	94.5%	91.7%
Students Eligible for Free and Reduced Lunch	28.8 %	28.5 %	32.1 %

For more information and further details about this report, visit www.state.co.us/schools
Colorado Department of Education, 201 East Colfax Ave. Denver, CO 80203

Falcon Elementary School
1110/2902/E

12050 Falcon Highway . Falcon, CO 80831 . 719-495-2256
10/20/2008

DISTRICT TAXPAYER'S REPORT

Sources of School District Revenue 2007

Local Tax Contribution	\$25,826,430
State Tax Contribution	55,487,866
Federal Grants	3,489,534
State Grants	3,366,543
Private/Partnership Grants	211,377
Other Discretionary Income	9,296,771
Total District Operating Revenue	\$97,678,521
Long Term Debt Proceeds	58,558,145
Total District Revenue	\$156,236,666
Total District Operating Revenue Per Pupil =	\$8,435
Total District Revenue Per Pupil (Including Long Term Debt) =	\$13,491
District Per Pupil Operating Revenue =	\$5,702
State Average Per Pupil Operating Revenue =	\$6,080

District Use of Funds 2007

Instructional & Instructional Support	\$52,917,238
Administration	5,233,392
Building & Facilities Maintenance	6,757,113
Operational Expenditures	7,255,802
Debt Service	27,424,795
Other Expenditures	2,440,118
Total District Operating Expenditures	\$102,028,458
Capital Expenditures	42,107,141
Total District Use of Funds	\$144,135,599

District Debt and Capital Construction & Equipment

Total Outstanding Bonded Debt	\$57,095,000
Average Annual Percentage Interest Rate on Debt	4.6%
Amount Raised from Most Recent Bond	\$28,000,000
Amount Spent on New Buildings During Last 2 Years	\$51,700,662

Accreditation

Accreditation is Colorado's primary accountability system, incorporating achievement levels, academic growth, achievement gaps, post-secondary readiness, improvement planning, and compliance. The state accredits districts and districts accredit individual schools.

District Accreditation Status for the 2007-2008 school year:

Voter Approved Funding Changes

Your community did /did not hold an election in November 2006

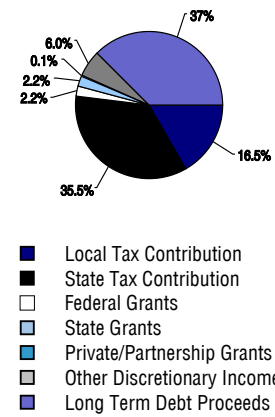
The following items have been approved by voters:

TABOR
Override

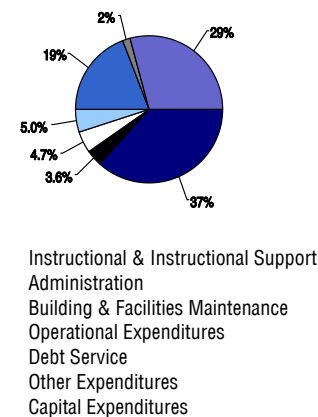
Bond

Mill Levy
Increase

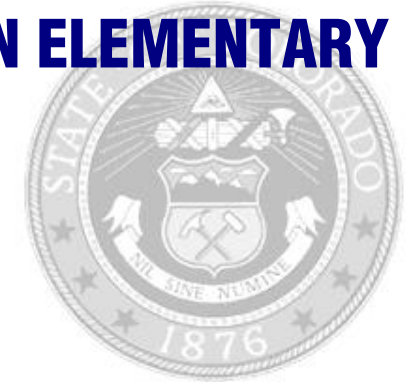
District Source of Funds 2007



District Use of Funds 2007



FALCON ELEMENTARY SCHOOL



FALCON 49

<http://www.d49.org/schools/fes/>

School Accountability Report 2007-2008 School Year

School Performance Summary

Overall Academic Performance on State Assessments **Average**

Academic Growth of Students **Typical**

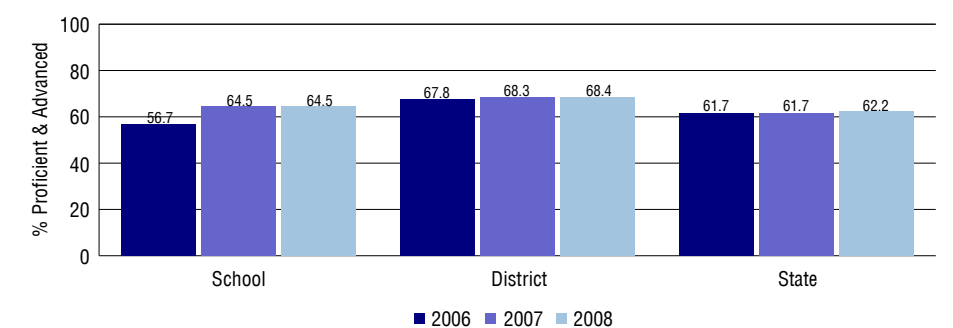
Overall Academic Performance on State Assessments

Each school in the State received a rating of "Excellent", "High", "Average", "Low", or "Unsatisfactory" for student academic performance based on 2007-2008 CSAP and COACT results. The rating is calculated using weighted percentages of each CSAP proficiency level for all content area and grade results for the school, as well as average COACT Reading, Writing, and Math Grade 11 results.

Academic Growth of Students

Each school in the State received a rating of "Low", "Typical", or "High" for student academic growth based on CSAP results. The calculation method is new for 2007-2008. The rating is calculated using student percentile scores matched over two years. More information about the Overall Academic Performance rating and Academic Growth of Students calculations can be found here: http://www.cde.state.co.us/cdeassess/SAR_Info.html.

Percent Proficient and Advanced for Elementary Grades for All Content Areas



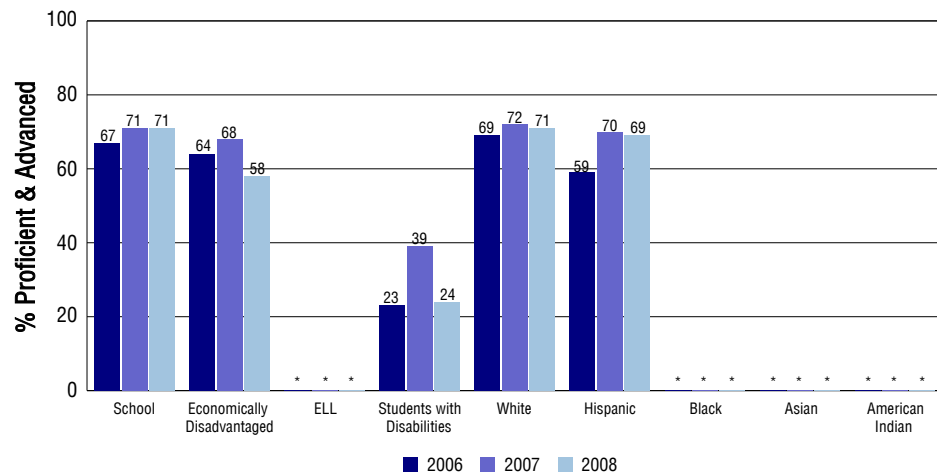
Student Test Scores Used For Calculating Overall Academic Performance

91.8%	Test Scores Counted
0.0%	Test Scores not used due to Language
8.2%	Test Scores not used due to New Student

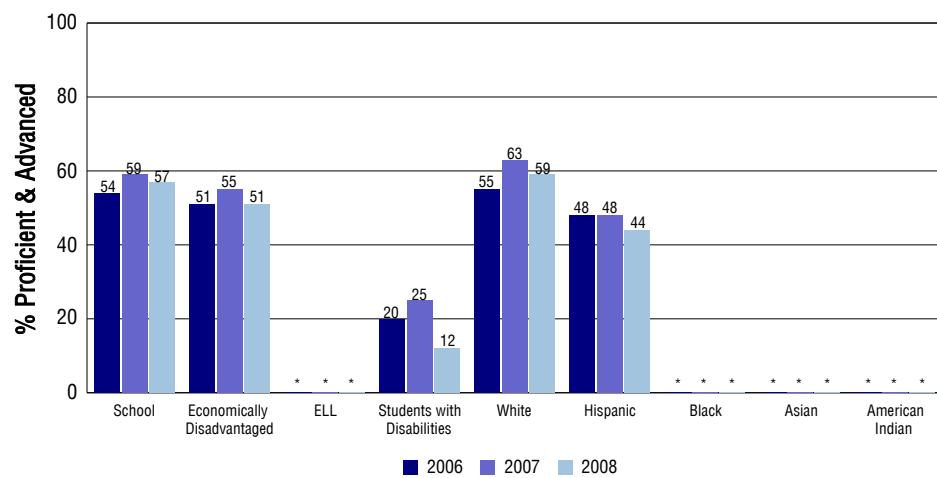
STUDENT PERFORMANCE

These graphs show the percent Proficient and Advanced trends over the past three years for Reading, Writing, and Math. Results are presented for the entire school for all reported grades as well as for different subgroups. Note: * indicates any group with less than 16 student results to be reported.

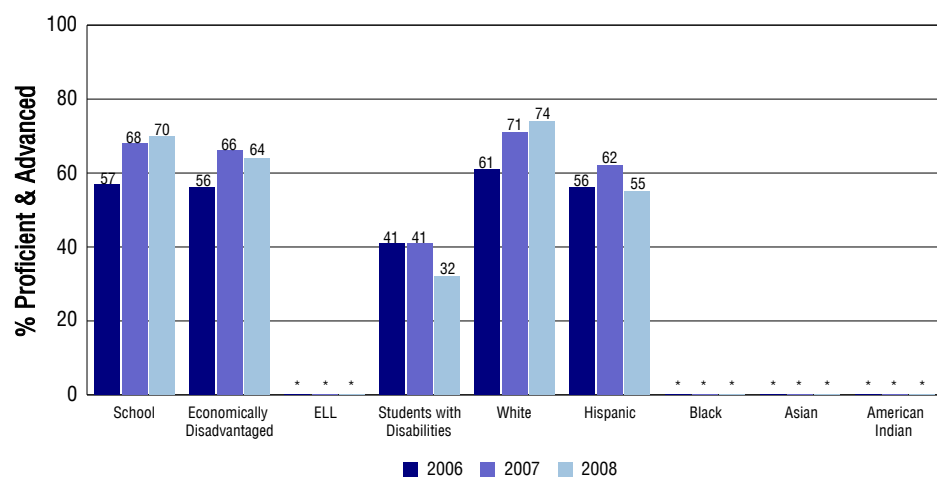
Reading



Writing



Math



SCHOOL INFORMATION

School Pride (as submitted by your district)

- Technology Integration across the Curriculum
- Positive Behavior Support Program
- Recognition for Academic Achievement and Positive Behavior
- Highly Qualified and Dedicated Staff

School Goals (as submitted by your district)

To ensure that all students learn, we will provide effective, engaging instruction and appropriate, timely interventions. Teachers will work collaboratively to develop common assessments and analyze results to inform their instruction.

No Child Left Behind - Adequate Yearly Progress

Did your school make AYP in reading? Yes Math? Yes
 How many targets does your school have? 26 Met? 26

Based on this school's academic performance, your child may be eligible for one or more of the following; ask your school if your child qualifies for:

Extra academic instruction either before or after-school, or in the summer
 Mentoring

For additional information regarding Adequate Yearly Progress please visit
<http://www.cde.state.co.us/FedPrograms/ayp/index.asp>

How Falcon Elementary School Compares To Elementary Schools Within A 75-Mile Radius

School	Program Type	Academic Performance	Academic Growth
Woodmen Hills Elementary School		High	Typical
Pikes Peak School Expeditionary Learning	Charter	Average	Typical
Meridian Ranch Elementary School		High	Typical
Banning Lewis Ranch Academy	Charter	High	Typical
Stetson Elementary School		High	Typical
Springs Ranch Elementary School		High	Typical
Ridgeview Elementary School		Average	Typical
Ranch Creek Elementary(1)		High	Typical
Remington Elementary School		High	Typical
Freedom Elementary School(2)	Special Education	High	Low

1 Located in Academy 20 School District.

2 Located in Colorado Springs 11 School District.

ABOUT OUR STAFF

School Employment

Each year, your district reports to the Colorado Department of Education on the number of adults who work in your school, as well as the type of work they do. Last year, your school employed:

	Your School		District	
	Full Time	Part Time	Full Time	Part Time
Teachers	29	1	705	32
Paraprofessionals	4	4	177	62
Administrators	2	0	58	1
Other Professionals	0	0	61	10
School Support	5	3	220	106
School Counselors	1	0	21	0
School Librarians	1	0	15	0
Total Staff	50		1464	

Students per Teacher Ratio

	Student Enrollment	Students per Teacher
Grade 1	44	12.4
Grade 2	55	12.1
Grade 3	64	14
Grade 4	75	16.5
Grade 5	64	14.7
Grade 6	77	17.7

Professional Experience of Teachers

	Your School	District
Average years of teaching experience	7	8
Percent of teachers teaching in the subject in which they received their degree	N/A	N/A
Number of teachers with Masters or Doctoral degrees	11	248
Teachers with 3 years or more of teaching experience	22	658
Teachers with less than 3 years of teaching experience	8	79
Number of professional development days	5	6

Salaries

	Your School	District	State
Average Teacher Salary	\$41,500	\$40,571	\$47,494
Average Administrator Salary	\$78,541	\$79,901	\$80,444

Principal: Nancy Valdez

Number of years as Principal at this school: 5

Number of years as Principal at any school: 5