

SAFETY AND SCHOOL ENVIRONMENT

Non-CSAP Course Offerings

Your School Offers	does	does not
• art.....	<input checked="" type="checkbox"/>	<input type="checkbox"/>
• drama or theater.....	<input checked="" type="checkbox"/>	<input type="checkbox"/>
• music.....	<input checked="" type="checkbox"/>	<input type="checkbox"/>
• physical education.....	<input checked="" type="checkbox"/>	<input type="checkbox"/>
• opportunity for civic or community engagement.....	<input checked="" type="checkbox"/>	<input type="checkbox"/>
• internet safety program.....	<input checked="" type="checkbox"/>	<input type="checkbox"/>
• International Baccalaureate.....	<input type="checkbox"/>	<input checked="" type="checkbox"/>
• extracurricular activities.....	<input checked="" type="checkbox"/>	<input type="checkbox"/>
• athletics.....	<input checked="" type="checkbox"/>	<input type="checkbox"/>
• career and technical education.....	<input checked="" type="checkbox"/>	<input type="checkbox"/>
• advanced placement.....	<input checked="" type="checkbox"/>	<input type="checkbox"/>
• honors.....	<input checked="" type="checkbox"/>	<input type="checkbox"/>

Safety and Discipline

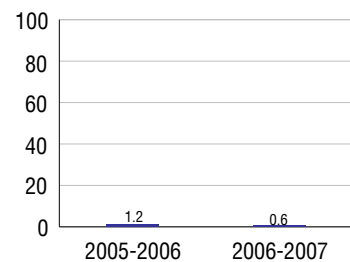
Safe schools are a top priority for parents, teachers, and communities. Your school safety and discipline record for the 2007-2008 school year is:

Type of Incident	Number of Incidents Reported	Percent of Total Incidents
Substance Abuse - Drugs	7	19.4%
Substance Abuse - Alcohol	4	11.1%
Substance Abuse - Tobacco	6	16.7%
Felony Assaults		
Fights	1	2.8%
Possession of Dangerous Weapons	2	5.6%
Other Violations Code of Conduct	16	44.4%

Student Attendance and School Calendar

2007-2008	Your School
Enrollment	1,511
Average Daily Attendance	1,377
Student Dropouts	0.6%

Dropout Rate



Student Information Over Time

	2005-2006	2006-2007	2007-2008
Student Enrollment Stability	89.8%	92.6%	92.6%
Students Eligible for Free and Reduced Lunch	18.9 %	23.5 %	26.1 %

For more information and further details about this report, visit www.state.co.us/schools
 Colorado Department of Education, 201 East Colfax Ave. Denver, CO 80203
Fountain-Fort Carson High School
 1000/3110/H
 900 Jimmy Camp Road . Fountain, CO 80817 . 719-382-1640
 10/20/2008

DISTRICT TAXPAYER'S REPORT

Sources of School District Revenue 2007

Local Tax Contribution	\$2,918,597
State Tax Contribution	31,616,748
Federal Grants	12,965,544
State Grants	1,943,770
Private/Partnership Grants	53,830
Other Discretionary Income	3,636,502
Total District Operating Revenue	\$53,134,991
Long Term Debt Proceeds	17,526,868
Total District Revenue	\$70,661,859
Total District Operating Revenue Per Pupil =	\$9,249
Total District Revenue Per Pupil (Including Long Term Debt) =	\$12,300
District Per Pupil Operating Revenue =	\$5,718
State Average Per Pupil Operating Revenue =	\$6,080

District Use of Funds 2007

Instructional & Instructional Support	\$29,210,654
Administration	3,871,092
Building & Facilities Maintenance	5,273,207
Operational Expenditures	4,116,533
Debt Service	725,287
Other Expenditures	1,920,369
Total District Operating Expenditures	\$45,117,142
Capital Expenditures	19,983,864
Total District Use of Funds	\$65,101,006

District Debt and Capital Construction & Equipment

Total Outstanding Bonded Debt	\$0
Average Annual Percentage Interest Rate on Debt	0%
Amount Raised from Most Recent Bond	\$0
Amount Spent on New Buildings During Last 2 Years	\$33,140,886

Accreditation

Accreditation is Colorado's primary accountability system, incorporating achievement levels, academic growth, achievement gaps, post-secondary readiness, improvement planning, and compliance. The state accredits districts and districts accredit individual schools.

District Accreditation Status for the 2007-2008 school year:

Voter Approved Funding Changes

Your community did /did not hold an election in November 2006

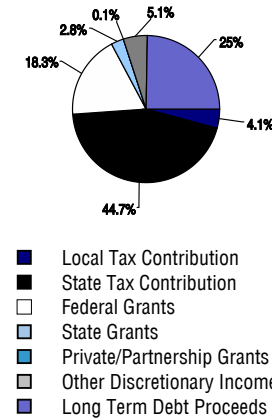
The following items have been approved by voters:

TABOR Override

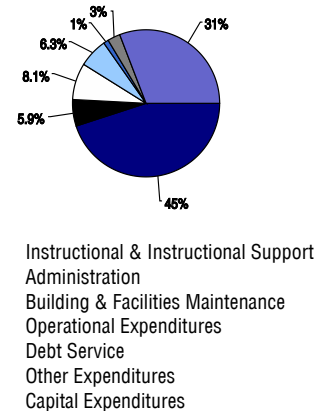
Bond

Mill Levy Increase

District Source of Funds 2007



District Use of Funds 2007



FOUNTAIN-FORT CARSON HIGH SCHOOL



FOUNTAIN 8

<http://www.ffc8.org/>

School Accountability Report 2007-2008 School Year

School Performance Summary

Overall Academic Performance on State Assessments **Average**

Academic Growth of Students **Low**

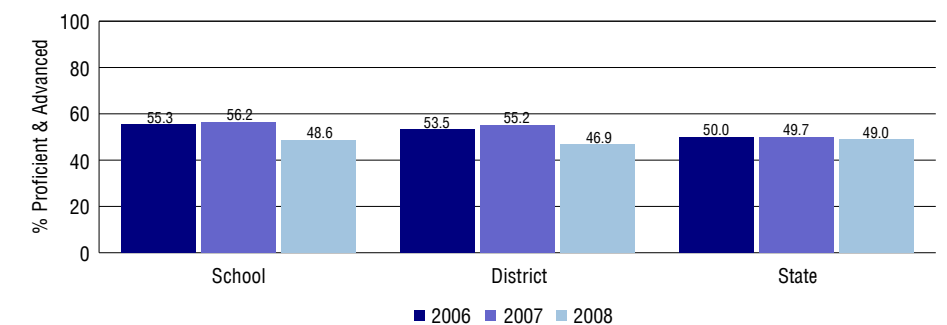
Overall Academic Performance on State Assessments

Each school in the State received a rating of "Excellent", "High", "Average", "Low", or "Unsatisfactory" for student academic performance based on 2007-2008 CSAP and COACT results. The rating is calculated using weighted percentages of each CSAP proficiency level for all content area and grade results for the school, as well as average COACT Reading, Writing, and Math Grade 11 results.

Academic Growth of Students

Each school in the State received a rating of "Low", "Typical", or "High" for student academic growth based on CSAP results. The calculation method is new for 2007-2008. The rating is calculated using student percentile scores matched over two years. More information about the Overall Academic Performance rating and Academic Growth of Students calculations can be found here: http://www.cde.state.co.us/cdeassess/SAR_Info.html.

Percent Proficient and Advanced for High Grades for All Content Areas



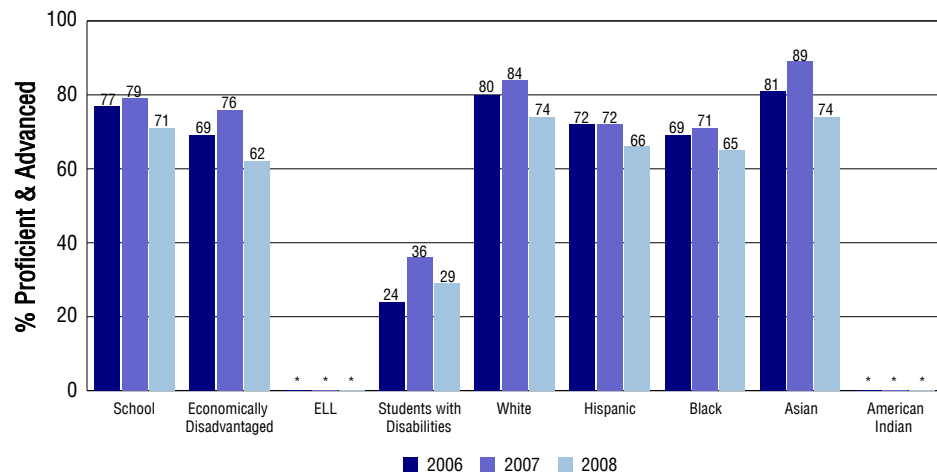
Student Test Scores Used For Calculating Overall Academic Performance

92.1%	Test Scores Counted
1.1%	Test Scores not used due to Language
6.8%	Test Scores not used due to New Student

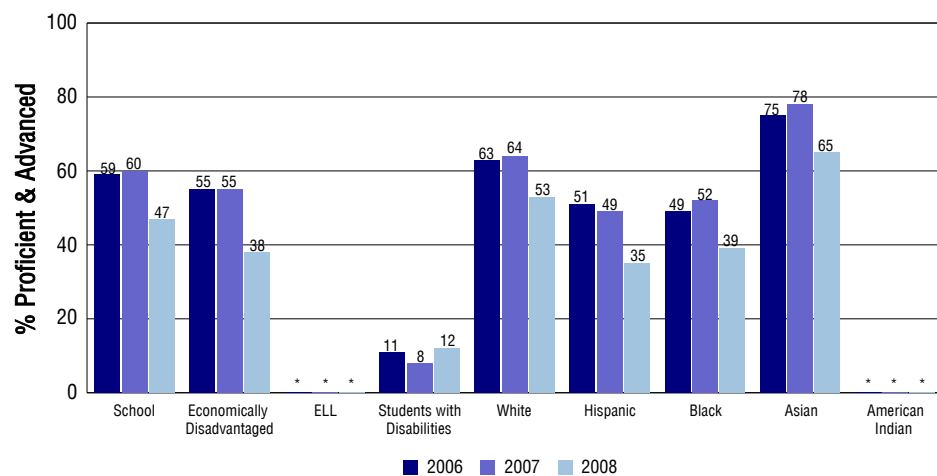
STUDENT PERFORMANCE

These graphs show the percent Proficient and Advanced trends over the past three years for Reading, Writing, and Math. Results are presented for the entire school for all reported grades as well as for different subgroups. Note: * indicates any group with less than 16 student results to be reported.

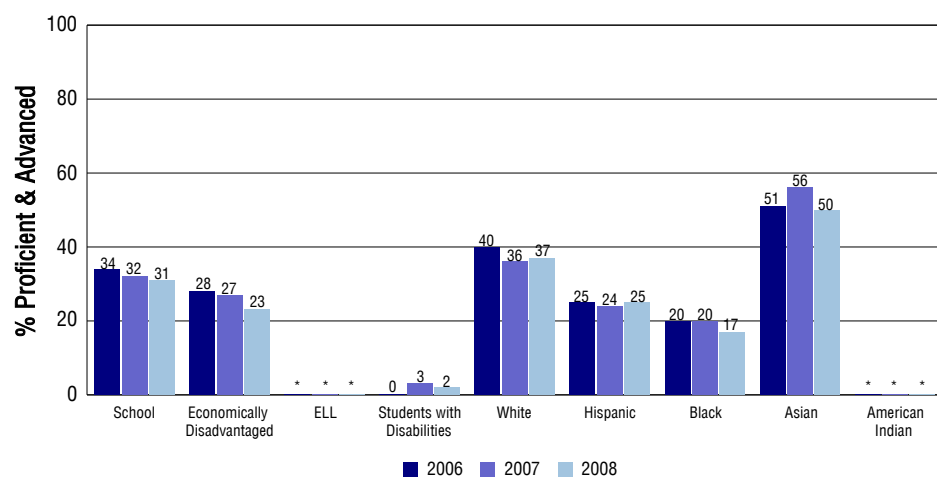
Reading



Writing



Math



SCHOOL INFORMATION

School Pride (as submitted by your district)

- Support for students with parents in the military is a priority. Diversity, a family like atmosphere, and dedication to achievement makes this school great.
- Every student in our school receives a laptop computer to use for learning. Students are empowered to use technology 24/7 as a way to prepare for the future.
- We offer 16 college level course that students can take for free. Upon graduation, many of our top students will have 30 to 40 college credits.
- Extracurricular offerings are a key component of our school. We have outstanding athletic programs and excellent vocal and instrumental music programs.

School Goals (as submitted by your district)

Our number one priority is to raise student achievement. We accomplish this through a concerted effort to meet the needs of all students. Struggling students are supported through various interventions. Gifted students are challenged through honors courses which prepare students for the college level classes we offer. We are supporting our students in their need to be 21st century learners through a one to one laptop initiative. Teachers are trained to use technology as a tool to engage students, help deepen student understanding of concepts, promote critical thinking skills, and prepare students for higher education and workplace readiness.

No Child Left Behind - Adequate Yearly Progress

Did your school make AYP in reading?	Yes	Math?	No
Did your school make the graduation rate targets?	Yes		
How many targets does your school have?	32	Met?	28

Based on this school's academic performance, your child may be eligible for one or more of the following; ask your school if your child qualifies for:

Extra academic instruction either before or after-school, or in the summer
Mentoring

For additional information regarding Adequate Yearly Progress please visit
<http://www.cde.state.co.us/FedPrograms/ayp/index.asp>

How Fountain-Fort Carson High School Compares To High Schools Within A 75-Mile Radius

School	Program Type	Academic Performance	Academic Growth
Lorraine Secondary School	Alternative	Low	No Rating
Mesa Ridge High School(1)		Average	Typical
Widefield High School(1)		Average	Typical
Discovery High School(1)	Alternative	Low	No Rating
James Irwin Charter High School(2)	Charter	Excellent	High
Sierra High School(2)		Low	Typical
Harrison High School(2)		Low	Typical
Shivers Academy Charter School(2)	Charter	No Rating	No Rating
The Vanguard School(3)	Charter	Excellent	High
Mitchell High School(4)		Average	Typical

1 Located in Widefield 3 School District.

2 Located in Harrison 2 School District.

3 Located in Cheyenne Mountain 12 School District.

4 Located in Colorado Springs 11 School District.

ABOUT OUR STAFF

School Employment

Each year, your district reports to the Colorado Department of Education on the number of adults who work in your school, as well as the type of work they do. Last year, your school employed:

	Your School		District	
	Full Time	Part Time	Full Time	Part Time
Teachers	82	1	373	11
Paraprofessionals	9	0	79	32
Administrators	5	0	35	1
Other Professionals	7	1	46	8
School Support	14	0	102	72
School Counselors	4	0	15	0
School Librarians	1	0	10	0
Total Staff	124		784	

Students per Teacher Ratio

	Student Enrollment	Students per Teacher
Grade 9	391	19
Grade 10	404	19.6
Grade 11	383	18.5
Grade 12	333	16.1

Professional Experience of Teachers

	Your School	District
Average years of teaching experience	7	8
Percent of teachers teaching in the subject in which they received their degree	96%	96%
Number of teachers with Masters or Doctoral degrees	34	197
Teachers with 3 years or more of teaching experience	54	282
Teachers with less than 3 years of teaching experience	29	102
Number of professional development days	5	5

Salaries

	Your School	District	State
Average Teacher Salary	\$42,067	\$43,230	\$47,494
Average Administrator Salary	\$87,476	\$88,148	\$80,444

Principal: James Calhoun

Number of years as Principal at this school: 5

Number of years as Principal at any school: 6