

# SAFETY AND SCHOOL ENVIRONMENT

## Non-CSAP Course Offerings

|  |                                     |                                     |
|--|-------------------------------------|-------------------------------------|
| Your School Offers                                   | does                                | does not                            |
| • art.....   | <input checked="" type="checkbox"/> | <input type="checkbox"/>            |
| • drama or theater.....                              | <input checked="" type="checkbox"/> | <input type="checkbox"/>            |
| • music.....   | <input checked="" type="checkbox"/> | <input type="checkbox"/>            |
| • physical education.....                            | <input checked="" type="checkbox"/> | <input type="checkbox"/>            |
| • opportunity for civic or community engagement..... | <input checked="" type="checkbox"/> | <input type="checkbox"/>            |
| • internet safety program.....                       | <input checked="" type="checkbox"/> | <input type="checkbox"/>            |
| • International Baccalaureate.....                   | <input type="checkbox"/>            | <input checked="" type="checkbox"/> |
| • extracurricular activities.....                    | <input checked="" type="checkbox"/> | <input type="checkbox"/>            |
| • athletics.....                                     | <input checked="" type="checkbox"/> | <input type="checkbox"/>            |
| • career and technical education.....                | <input type="checkbox"/>            | <input checked="" type="checkbox"/> |
| • honors.....  | <input checked="" type="checkbox"/> | <input type="checkbox"/>            |

## Safety and Discipline

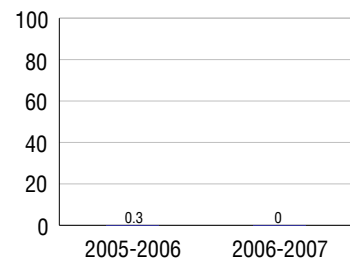
Safe schools are a top priority for parents, teachers, and communities. Your school safety and discipline record for the 2007-2008 school year is:

| Type of Incident                 | Number of Incidents Reported | Percent of Total Incidents |
|----------------------------------|------------------------------|----------------------------|
| Substance Abuse - Drugs          | 1                            | 16.7%                      |
| Substance Abuse - Alcohol        |                              |                            |
| Substance Abuse - Tobacco        |                              |                            |
| Felony Assaults                  |                              |                            |
| Fights                           |                              |                            |
| Possession of Dangerous Weapons  |                              |                            |
| Other Violations Code of Conduct | 5                            | 83.3%                      |

## Student Attendance and School Calendar

| 2007-2008                | Your School |
|--------------------------|-------------|
| Enrollment               | 842         |
| Average Daily Attendance | 778         |
| Student Dropouts         | 0.0%        |

## Dropout Rate



## Student Information Over Time

|  | 2005-2006 | 2006-2007 | 2007-2008 |
|--|-----------|-----------|-----------|
| Student Enrollment Stability                 | 92.8%     | 95.3%     | 94.7%     |
| Students Eligible for Free and Reduced Lunch | 30.3 %    | 33.3 %    | 33.7 %    |

For more information and further details about this report, visit [www.state.co.us/schools](http://www.state.co.us/schools)  
 Colorado Department of Education, 201 East Colfax Ave. Denver, CO 80203  
**Fountain Middle School**  
 1000/3106/M  
 515 N. Sante Fe . Fountain, CO 80817 . 719-382-1580  
 10/20/2008

# DISTRICT TAXPAYER'S REPORT

## Sources of School District Revenue 2007

|  |                     |
|--|---------------------|
| Local Tax Contribution   | \$2,918,597         |
| State Tax Contribution   | 31,616,748          |
| Federal Grants   | 12,965,544          |
| State Grants   | 1,943,770           |
| Private/Partnership Grants   | 53,830              |
| Other Discretionary Income   | 3,636,502           |
| <b>Total District Operating Revenue</b>                              | <b>\$53,134,991</b> |
| Long Term Debt Proceeds  | 17,526,868          |
| <b>Total District Revenue</b>  | <b>\$70,661,859</b> |
| <b>Total District Operating Revenue Per Pupil =</b>                  | <b>\$9,249</b>      |
| <b>Total District Revenue Per Pupil (Including Long Term Debt) =</b> | <b>\$12,300</b>     |
| <b>District Per Pupil Operating Revenue =</b>                        | <b>\$5,718</b>      |
| <b>State Average Per Pupil Operating Revenue =</b>                   | <b>\$6,080</b>      |

## District Use of Funds 2007

|  |                     |
|--|---------------------|
| Instructional & Instructional Support        | \$29,210,654        |
| Administration                               | 3,871,092           |
| Building & Facilities Maintenance            | 5,273,207           |
| Operational Expenditures                     | 4,116,533           |
| Debt Service                                 | 725,287             |
| Other Expenditures                           | 1,920,369           |
| <b>Total District Operating Expenditures</b> | <b>\$45,117,142</b> |
| Capital Expenditures                         | 19,983,864          |
| <b>Total District Use of Funds</b>           | <b>\$65,101,006</b> |

## District Debt and Capital Construction & Equipment

|   |              |
|---|--------------|
| Total Outstanding Bonded Debt                     | \$0          |
| Average Annual Percentage Interest Rate on Debt   | 0%           |
| Amount Raised from Most Recent Bond               | \$0          |
| Amount Spent on New Buildings During Last 2 Years | \$33,140,886 |

## Accreditation

Accreditation is Colorado's primary accountability system, incorporating achievement levels, academic growth, achievement gaps, post-secondary readiness, improvement planning, and compliance. The state accredits districts and districts accredit individual schools.

District Accreditation Status for the 2007-2008 school year:

## Voter Approved Funding Changes

Your community did  /did not  hold an election in November 2006

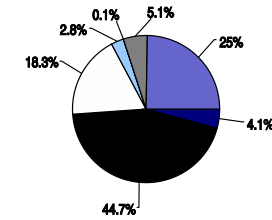
The following items have been approved by voters:

TABOR Override

Bond

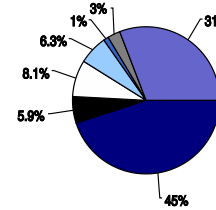
Mill Levy Increase

## District Source of Funds 2007



■ Local Tax Contribution  
 ■ State Tax Contribution  
 □ Federal Grants  
 □ State Grants  
 □ Private/Partnership Grants  
 □ Other Discretionary Income  
 □ Long Term Debt Proceeds

## District Use of Funds 2007



■ Instructional & Instructional Support  
 ■ Administration  
 □ Building & Facilities Maintenance  
 □ Operational Expenditures  
 □ Debt Service  
 □ Other Expenditures  
 □ Capital Expenditures

# FOUNTAIN MIDDLE SCHOOL



## FOUNTAIN 8

<http://www.ffc8.org/>

## School Accountability Report 2007-2008 School Year

### School Performance Summary

**Overall Academic Performance on State Assessments**

**High**

**Academic Growth of Students**

**Typical**

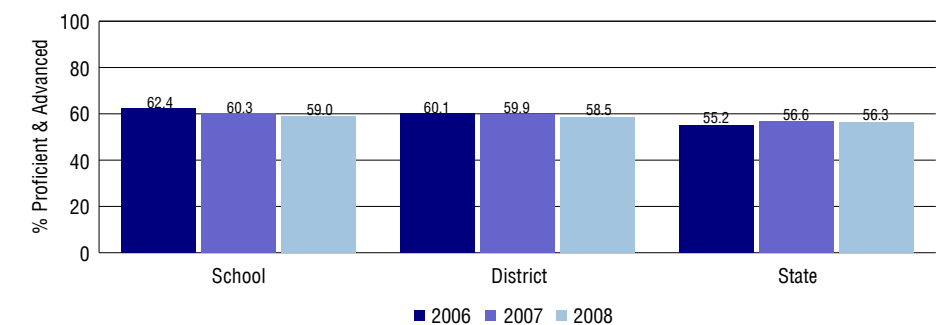
### Overall Academic Performance on State Assessments

Each school in the State received a rating of "Excellent", "High", "Average", "Low", or "Unsatisfactory" for student academic performance based on 2007-2008 CSAP and COACT results. The rating is calculated using weighted percentages of each CSAP proficiency level for all content area and grade results for the school, as well as average COACT Reading, Writing, and Math Grade 11 results.

### Academic Growth of Students

Each school in the State received a rating of "Low", "Typical", or "High" for student academic growth based on CSAP results. The calculation method is new for 2007-2008. The rating is calculated using student percentile scores matched over two years. More information about the Overall Academic Performance rating and Academic Growth of Students calculations can be found here: [http://www.cde.state.co.us/cdeassess/SAR\\_Info.html](http://www.cde.state.co.us/cdeassess/SAR_Info.html).

### Percent Proficient and Advanced for Middle Grades for All Content Areas



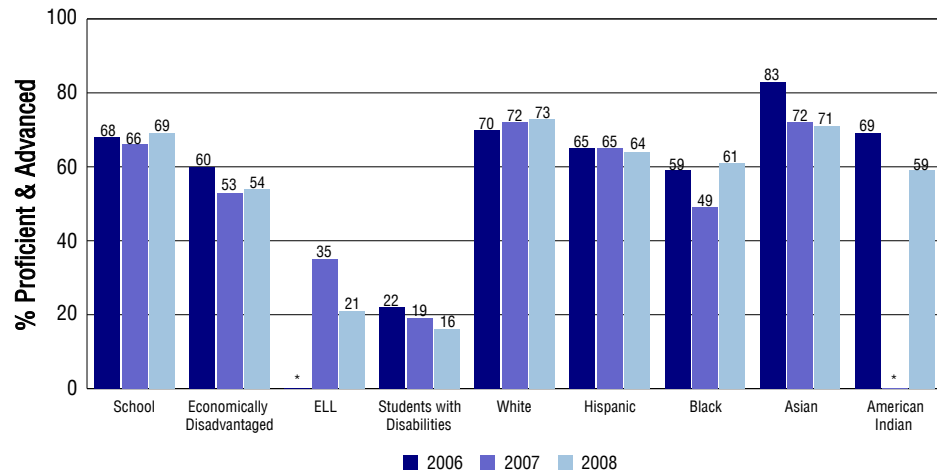
### Student Test Scores Used For Calculating Overall Academic Performance

|       |   |
|-------|---|
| 91.3% | Test Scores Counted                     |
| 1.2%  | Test Scores not used due to Language    |
| 7.5%  | Test Scores not used due to New Student |

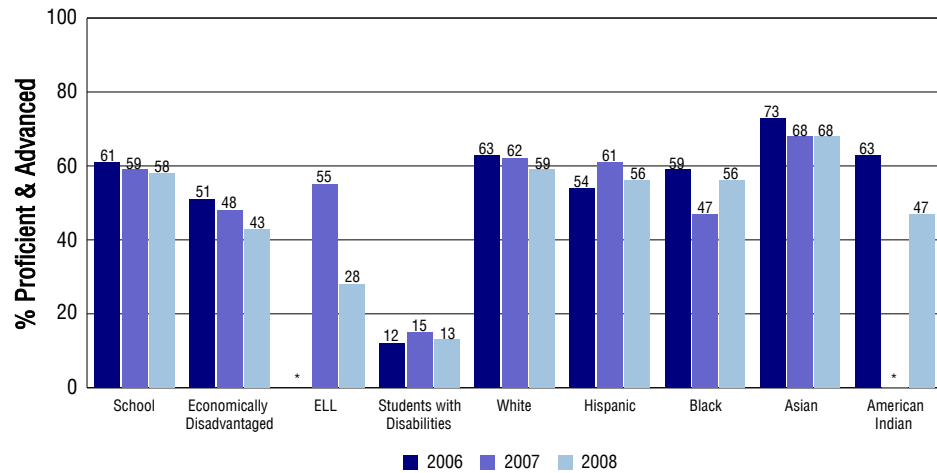
## STUDENT PERFORMANCE

These graphs show the percent Proficient and Advanced trends over the past three years for Reading, Writing, and Math. Results are presented for the entire school for all reported grades as well as for different subgroups. Note: \* indicates any group with less than 16 student results to be reported.

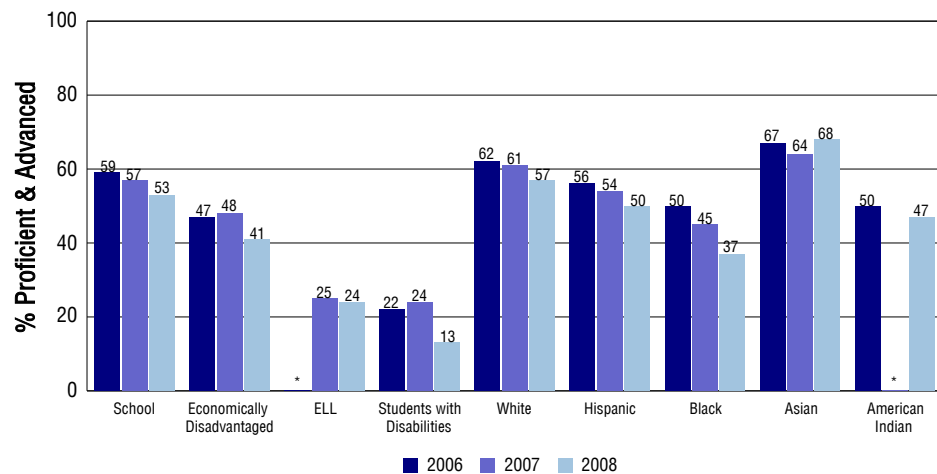
### Reading



### Writing



### Math



## SCHOOL INFORMATION

### School Pride (as submitted by your district)

- We have the PRIDE Habits of Mind: students and staff practice Perseverance, Respect, Integrity, Discipline, and Effort
- Our students participate in a variety of extracurricular opportunities including math competitions, knowledge bowl, choir, band, athletics, and many others.
- Staff members are well prepared and committed to using rigor, relevance, and relationship strategies in order to ensure success for all students.
- 

### School Goals (as submitted by your district)

We will increase student achievement in all academic areas. In order to do this, we will utilize the RtI process to differentiate and personalize instruction for each student; we will use student data in each area and measure student longitudinal growth; and we will combine efforts by uses interdisciplinary teaching strategies to enhance student learning. Secondly, we will increase positive behaviors in our students by continuing the use of Positive Behavior Support (PBS) strategies to teach our students the expectations and to give incentives for positive behaviors consistently displayed.

### No Child Left Behind - Adequate Yearly Progress

|   |    |       |    |
|---|----|-------|----|
| Did your school make AYP in reading?    | No | Math? | No |
| How many targets does your school have? | 36 | Met?  | 34 |

Based on this school's academic performance, your child may be eligible for one or more of the following; ask your school if your child qualifies for:

Extra academic instruction either before or after-school, or in the summer  
Mentoring

For additional information regarding Adequate Yearly Progress please visit  
<http://www.cde.state.co.us/FedPrograms/ayp/index.asp>

### How Fountain Middle School Compares To Middle Schools Within A 75-Mile Radius

| School                                  | Program Type | Academic Performance | Academic Growth |
|---|--------------|----------------------|-----------------|
| Lorraine Secondary School               | Alternative  | Low                  | No Rating       |
| Janitell Junior High School(1)          |              | High                 | High            |
| James Madison Charter Academy School(1) | Charter      | High                 | No Rating       |
| Watson Junior High School(1)            |              | Average              | Typical         |
| Sproul Junior High School(1)            |              | Average              | High            |
| Carson Middle School                    |              | High                 | Typical         |
| James Irwin Charter Middle School(2)    | Charter      | High                 | Typical         |
| Panorama Middle School(2)               |              | Average              | Typical         |
| Fox Meadow Middle School(2)             |              | Average              | Low             |
| Carmel Middle School(2)                 |              | Low                  | Low             |

1 Located in Widefield 3 School District.  
2 Located in Harrison 2 School District.

## ABOUT OUR STAFF

### School Employment

Each year, your district reports to the Colorado Department of Education on the number of adults who work in your school, as well as the type of work they do. Last year, your school employed:

|                     | Your School |           | District  |           |
|---------------------|-------------|-----------|-----------|-----------|
|                     | Full Time   | Part Time | Full Time | Part Time |
| Teachers            | 47          | 3         | 373       | 11        |
| Paraprofessionals   | 7           | 2         | 79        | 32        |
| Administrators      | 3           | 0         | 35        | 1         |
| Other Professionals | 2           | 2         | 46        | 8         |
| School Support      | 9           | 0         | 102       | 72        |
| School Counselors   | 2           | 0         | 15        | 0         |
| School Librarians   | 1           | 0         | 10        | 0         |
| <b>Total Staff</b>  | 78          |           | 784       |           |

### Students per Teacher Ratio

|         | Student Enrollment | Students per Teacher |
|---------|--------------------|----------------------|
| Grade 6 | 271                | 17.1                 |
| Grade 7 | 300                | 18.4                 |
| Grade 8 | 271                | 15.7                 |

### Professional Experience of Teachers

|   | Your School | District |
|---|-------------|----------|
| Average years of teaching experience  | 8           | 8        |
| Percent of teachers teaching in the subject in which they received their degree | 95%         | 96%      |
| Number of teachers with Masters or Doctoral degrees                             | 23          | 197      |
| Teachers with 3 years or more of teaching experience                            | 37          | 282      |
| Teachers with less than 3 years of teaching experience                          | 13          | 102      |
| Number of professional development days   | 5           | 5        |

### Salaries

|                              | Your School | District | State    |
|------------------------------|-------------|----------|----------|
| Average Teacher Salary       | \$42,424    | \$43,230 | \$47,494 |
| Average Administrator Salary | \$83,029    | \$88,148 | \$80,444 |

Principal: Debra Keiley

Number of years as Principal at this school: 5

Number of years as Principal at any school: 6