

# SAFETY AND SCHOOL ENVIRONMENT

## Non-CSAP Course Offerings

Your School Offers	does	does not
• art.....	<input checked="" type="checkbox"/>	<input type="checkbox"/>
• drama or theater.....	<input type="checkbox"/>	<input checked="" type="checkbox"/>
• music.....	<input checked="" type="checkbox"/>	<input type="checkbox"/>
• physical education.....	<input checked="" type="checkbox"/>	<input type="checkbox"/>
• opportunity for civic or community engagement.....	<input checked="" type="checkbox"/>	<input type="checkbox"/>
• internet safety program.....	<input checked="" type="checkbox"/>	<input type="checkbox"/>
• International Baccalaureate.....	<input type="checkbox"/>	<input checked="" type="checkbox"/>
• extracurricular activities.....	<input type="checkbox"/>	<input checked="" type="checkbox"/>
• athletics.....	<input checked="" type="checkbox"/>	<input type="checkbox"/>
• preschool program.....	<input checked="" type="checkbox"/>	<input type="checkbox"/>
• full-day kindergarten program.....	<input type="checkbox"/>	<input checked="" type="checkbox"/>
• before-and-after-school care program.....	<input type="checkbox"/>	<input checked="" type="checkbox"/>

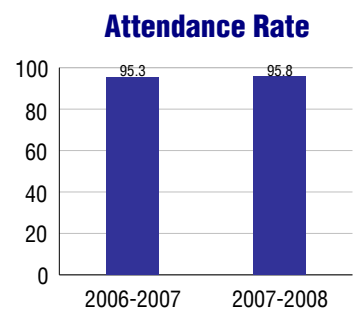
## Safety and Discipline

Safe schools are a top priority for parents, teachers, and communities. Your school safety and discipline record for the 2007-2008 school year is:

Type of Incident	Number of Incidents Reported	Percent of Total Incidents
Substance Abuse - Drugs		
Substance Abuse - Alcohol		
Substance Abuse - Tobacco		
Felony Assaults		
Fights		
Possession of Dangerous Weapons		
Other Violations Code of Conduct	17	100.0%

## Student Attendance and School Calendar

2007-2008	Your School
Enrollment	346
Average Daily Attendance	331
Student Dropouts	N/A



## Student Information Over Time

	2005-2006	2006-2007	2007-2008
Student Enrollment Stability	99.1%	97.1%	97.4%
Students Eligible for Free and Reduced Lunch	5.0 %	4.4 %	5.2 %

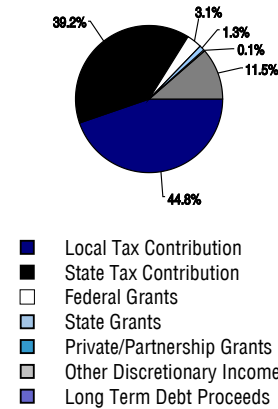
For more information and further details about this report, visit [www.state.co.us/schools](http://www.state.co.us/schools)  
 Colorado Department of Education, 201 East Colfax Ave. Denver, CO 80203  
**Gold Camp Elementary School**  
 1020/3482/E  
 1805 Preserve Drive . Colorado Springs, CO 80906 . 719-327-2820  
 10/20/2008

# DISTRICT TAXPAYER'S REPORT

## Sources of School District Revenue 2007

Local Tax Contribution	\$18,455,056
State Tax Contribution	16,117,652
Federal Grants	1,287,076
State Grants	530,812
Private/Partnership Grants	31,595
Other Discretionary Income	4,727,176
<b>Total District Operating Revenue</b>	<b>\$41,149,367</b>
Long Term Debt Proceeds	0
<b>Total District Revenue</b>	<b>\$41,149,367</b>
<b>Total District Operating Revenue Per Pupil =</b>	<b>\$9,122</b>
<b>Total District Revenue Per Pupil (Including Long Term Debt) =</b>	<b>\$9,122</b>
<b>District Per Pupil Operating Revenue =</b>	<b>\$5,687</b>
<b>State Average Per Pupil Operating Revenue =</b>	<b>\$6,080</b>

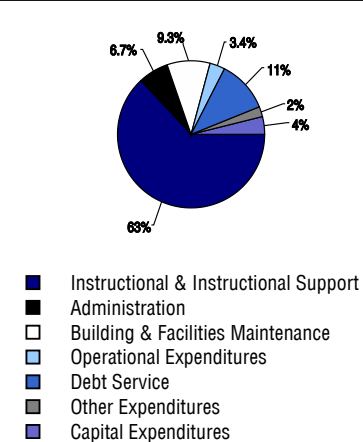
## District Source of Funds 2007



## District Use of Funds 2007

Instructional & Instructional Support	\$25,471,292
Administration	2,701,523
Building & Facilities Maintenance	3,764,094
Operational Expenditures	1,372,719
Debt Service	4,603,932
Other Expenditures	930,282
<b>Total District Operating Expenditures</b>	<b>\$38,843,842</b>
Capital Expenditures	1,521,753
<b>Total District Use of Funds</b>	<b>\$40,365,595</b>

## District Use of Funds 2007



## District Debt and Capital Construction & Equipment

Total Outstanding Bonded Debt	\$33,311,120
Average Annual Percentage Interest Rate on Debt	4.68%
Amount Raised from Most Recent Bond	\$13,750,000
Amount Spent on New Buildings During Last 2 Years	\$1,802,519

## Accreditation

Accreditation is Colorado's primary accountability system, incorporating achievement levels, academic growth, achievement gaps, post-secondary readiness, improvement planning, and compliance. The state accredits districts and districts accredit individual schools.

District Accreditation Status for the 2007-2008 school year:

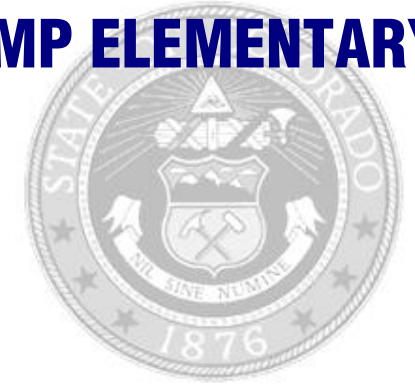
## Voter Approved Funding Changes

Your community did  /did not  hold an election in November 2006

The following items have been approved by voters:

TABOR Override       Bond       Mill Levy Increase

# GOLD CAMP ELEMENTARY SCHOOL



## CHEYENNE MOUNTAIN 12

<http://www.cmsd.k12.co.us/>  
**School Accountability Report**  
**2007-2008 School Year**

## School Performance Summary

**Overall Academic Performance on State Assessments** **Excellent**

**Academic Growth of Students** **High**

Winner of a John Irwin School of Excellence for the 2007-2008 School Year

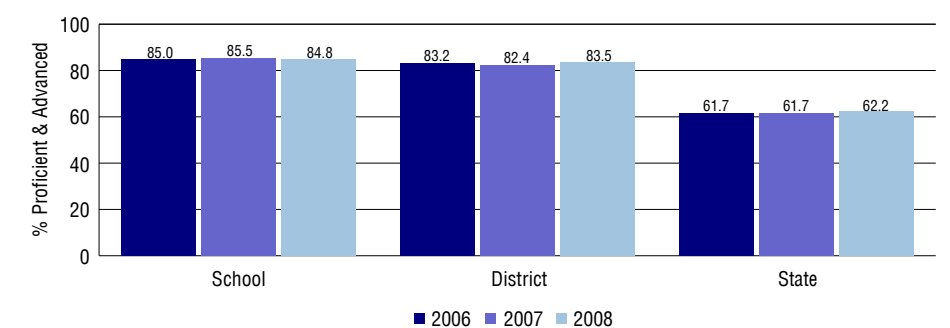
### Overall Academic Performance on State Assessments

Each school in the State received a rating of "Excellent", "High", "Average", "Low", or "Unsatisfactory" for student academic performance based on 2007-2008 CSAP and COACT results. The rating is calculated using weighted percentages of each CSAP proficiency level for all content area and grade results for the school, as well as average COACT Reading, Writing, and Math Grade 11 results.

### Academic Growth of Students

Each school in the State received a rating of "Low", "Typical", or "High" for student academic growth based on CSAP results. The calculation method is new for 2007-2008. The rating is calculated using student percentile scores matched over two years. More information about the Overall Academic Performance rating and Academic Growth of Students calculations can be found here: [http://www.cde.state.co.us/cdeassess/SAR\\_Info.html](http://www.cde.state.co.us/cdeassess/SAR_Info.html).

## Percent Proficient and Advanced for Elementary Grades for All Content Areas



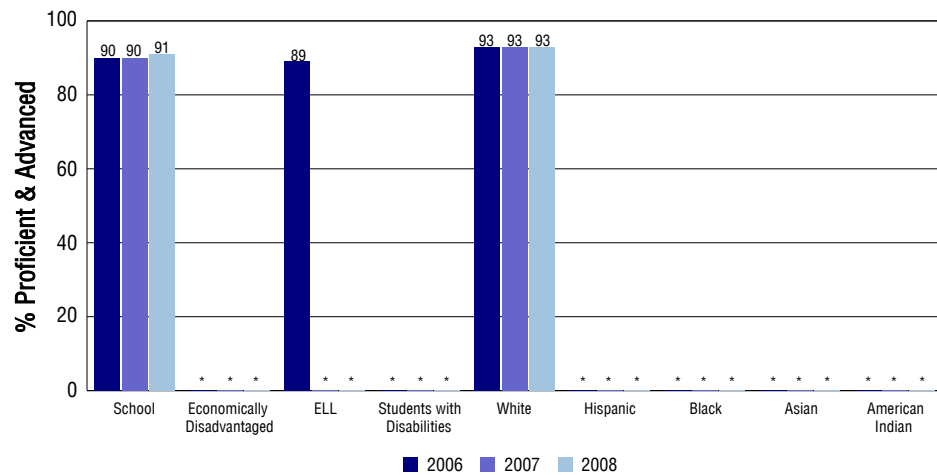
## Student Test Scores Used For Calculating Overall Academic Performance

95.4%	Test Scores Counted
3.0%	Test Scores not used due to Language
1.7%	Test Scores not used due to New Student

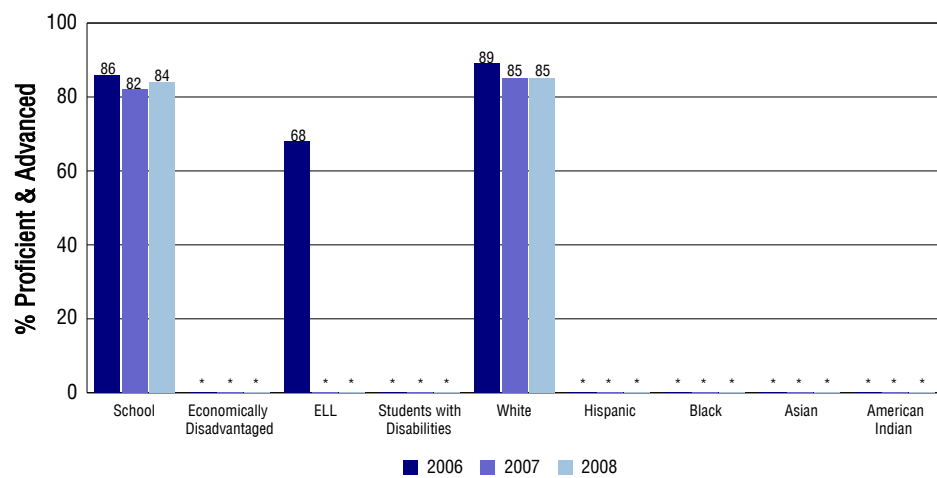
## STUDENT PERFORMANCE

These graphs show the percent Proficient and Advanced trends over the past three years for Reading, Writing, and Math. Results are presented for the entire school for all reported grades as well as for different subgroups. Note: \* indicates any group with less than 16 student results to be reported.

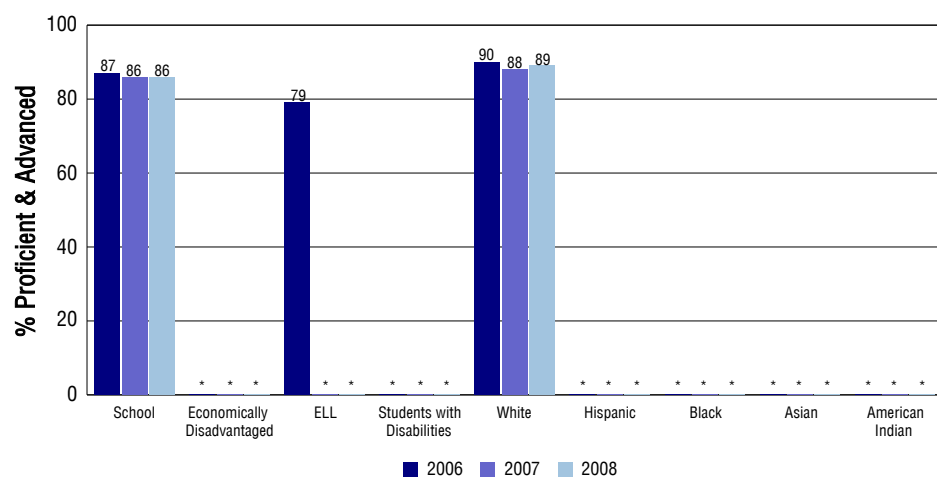
### Reading



### Writing



### Math



## SCHOOL INFORMATION

### School Pride (as submitted by your district)

- RANKED BY THE COLORADO DEPARTMENT OF EDUCATION AS THE HIGHEST ACHIEVING SCHOOL DISTRICT IN THE STATE.
- OUTSTANDING PARENTAL AND COMMUNITY SUPPORT
- COMMITMENT TO EXCELLENCE IN ACADEMICS, ARTS, AND ATHLETICS
- STUDENTS WHO ARE EAGER AND READY TO LEARN.

### School Goals (as submitted by your district)

CLEARLY DEFINED STUDENT LEARNING OUTCOMES; FULLY ARTICULATED AND ALIGNED PK/12 CURRICULUM; EFFECTIVE USE OF STUDENT ASSESSMENT DATA; INHERENT CULTURE OF COLLABORATION AND INQUIRY ABOUT STUDENT ACHIEVEMENT.

### No Child Left Behind - Adequate Yearly Progress

Did your school make AYP in reading? Yes Math? Yes  
 How many targets does your school have? 12 Met? 12

Based on this school's academic performance, your child may be eligible for one or more of the following; ask your school if your child qualifies for:

Extra academic instruction either before or after-school, or in the summer  
 Mentoring

For additional information regarding Adequate Yearly Progress please visit  
<http://www.cde.state.co.us/FedPrograms/ayp/index.asp>

### How Gold Camp Elementary School Compares To Elementary Schools Within A 75-Mile Radius

School	Program Type	Academic Performance	Academic Growth
Skyway Park Elementary School		High	Typical
Canon Elementary School		Excellent	Typical
Broadmoor Elementary School		Excellent	High
Ivywild Elementary School(1)		Average	Typical
Midland Elementary School(1)		High	Typical
Washington Elementary School(1)		Average	Typical
Cheyenne Mountain Charter Academy	Charter	Excellent	Typical
Stratton Meadows Elementary School(2)		Average	Typical
Buena Vista Elementary School(1)		Average	Typical
Oak Creek Elementary School(2)		Average	Typical

1 Located in Colorado Springs 11 School District.  
 2 Located in Harrison 2 School District.

## ABOUT OUR STAFF

### School Employment

Each year, your district reports to the Colorado Department of Education on the number of adults who work in your school, as well as the type of work they do. Last year, your school employed:

	Your School		District	
	Full Time	Part Time	Full Time	Part Time
Teachers	22	4	294	29
Paraprofessionals	3	4	64	35
Administrators	1	1	22	2
Other Professionals	10	2	25	6
School Support	3	1	51	41
School Counselors	1	0	13	1
School Librarians	1	0	8	0
<b>Total Staff</b>	53		585	

### Students per Teacher Ratio

	Student Enrollment	Students per Teacher
Grade 1	46	13.9
Grade 2	41	12.4
Grade 3	46	13.9
Grade 4	50	15.1
Grade 5	52	15.7
Grade 6	39	11.8

### Professional Experience of Teachers

	Your School	District
Average years of teaching experience	13	11
Percent of teachers teaching in the subject in which they received their degree	N/A	N/A
Number of teachers with Masters or Doctoral degrees	20	189
Teachers with 3 years or more of teaching experience	22	261
Teachers with less than 3 years of teaching experience	4	62
Number of professional development days	5	5

### Salaries

	Your School	District	State
Average Teacher Salary	\$47,173	\$44,388	\$47,494
Average Administrator Salary	\$84,778	\$87,287	\$80,444

Principal: Kallene Casias

Number of years as Principal at this school: 1 (New Hire 2007/2008)

Number of years as Principal at any school: 1