

SAFETY AND SCHOOL ENVIRONMENT

Non-CSAP Course Offerings

Your School Offers	does	does not
• art.....	<input checked="" type="checkbox"/>	<input type="checkbox"/>
• drama or theater.....	<input checked="" type="checkbox"/>	<input type="checkbox"/>
• music.....	<input checked="" type="checkbox"/>	<input type="checkbox"/>
• physical education.....	<input checked="" type="checkbox"/>	<input type="checkbox"/>
• opportunity for civic or community engagement.....	<input checked="" type="checkbox"/>	<input type="checkbox"/>
• internet safety program.....	<input type="checkbox"/>	<input checked="" type="checkbox"/>
• International Baccalaureate.....	<input type="checkbox"/>	<input checked="" type="checkbox"/>
• extracurricular activities.....	<input checked="" type="checkbox"/>	<input type="checkbox"/>
• athletics.....	<input checked="" type="checkbox"/>	<input type="checkbox"/>
• career and technical education.....	<input type="checkbox"/>	<input checked="" type="checkbox"/>
• honors.....	<input type="checkbox"/>	<input checked="" type="checkbox"/>

Safety and Discipline

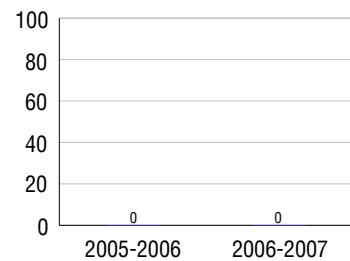
Safe schools are a top priority for parents, teachers, and communities. Your school safety and discipline record for the 2007-2008 school year is:

Type of Incident	Number of Incidents Reported	Percent of Total Incidents
Substance Abuse - Drugs	3	0.9%
Substance Abuse - Alcohol		
Substance Abuse - Tobacco		
Felony Assaults		
Fights	20	5.7%
Possession of Dangerous Weapons		
Other Violations Code of Conduct	328	93.4%

Student Attendance and School Calendar

2007-2008	Your School
Enrollment	342
Average Daily Attendance	332
Student Dropouts	0.0%

Dropout Rate



Student Information Over Time

	2005-2006	2006-2007	2007-2008
Student Enrollment Stability	100%	97.0%	98.2%
Students Eligible for Free and Reduced Lunch	24.1 %	18.8 %	22.5 %

For more information and further details about this report, visit www.state.co.us/schools
Colorado Department of Education, 201 East Colfax Ave. Denver, CO 80203

Manitou Springs Middle School
1030/5464/M

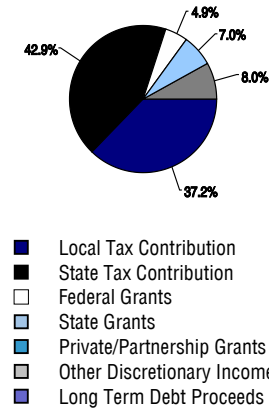
415 El Monte Place . Manitou Springs, CO 80829 . 719-685-2127
10/20/2008

DISTRICT TAXPAYER'S REPORT

Sources of School District Revenue 2007

Local Tax Contribution	\$5,076,506
State Tax Contribution	5,857,365
Federal Grants	669,895
State Grants	955,050
Private/Partnership Grants	0
Other Discretionary Income	1,088,208
Total District Operating Revenue	\$13,647,024
Long Term Debt Proceeds	0
Total District Revenue	\$13,647,024
Total District Operating Revenue Per Pupil =	\$10,449
Total District Revenue Per Pupil (Including Long Term Debt) =	\$10,449
District Per Pupil Operating Revenue =	\$6,162
State Average Per Pupil Operating Revenue =	\$6,080

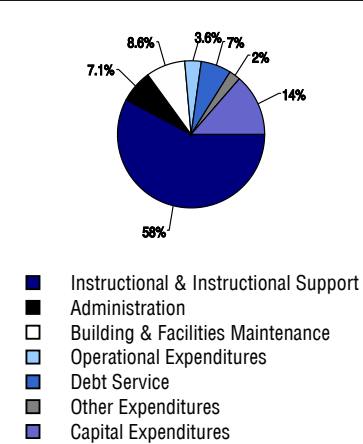
District Source of Funds 2007



District Use of Funds 2007

Instructional & Instructional Support	\$7,940,140
Administration	978,531
Building & Facilities Maintenance	1,187,532
Operational Expenditures	490,091
Debt Service	939,158
Other Expenditures	325,721
Total District Operating Expenditures	\$11,861,173
Capital Expenditures	1,869,268
Total District Use of Funds	\$13,730,441

District Use of Funds 2007



District Debt and Capital Construction & Equipment

Total Outstanding Bonded Debt	\$8,480,000
Average Annual Percentage Interest Rate on Debt	5.3%
Amount Raised from Most Recent Bond	\$8,500,000
Amount Spent on New Buildings During Last 2 Years	\$28,123

Accreditation

Accreditation is Colorado's primary accountability system, incorporating achievement levels, academic growth, achievement gaps, post-secondary readiness, improvement planning, and compliance. The state accredits districts and districts accredit individual schools.

District Accreditation Status for the 2007-2008 school year:

Voter Approved Funding Changes

Your community did /did not hold an election in November 2006

The following items have been approved by voters:

TABOR
Override

Bond

Mill Levy
Increase
\$1,000,000

MANITOU SPRINGS MIDDLE SCHOOL



MANITOU SPRINGS 14

<http://www.mssd14.org>

School Accountability Report 2007-2008 School Year

School Performance Summary

Overall Academic Performance on State Assessments

High

Academic Growth of Students

Typical

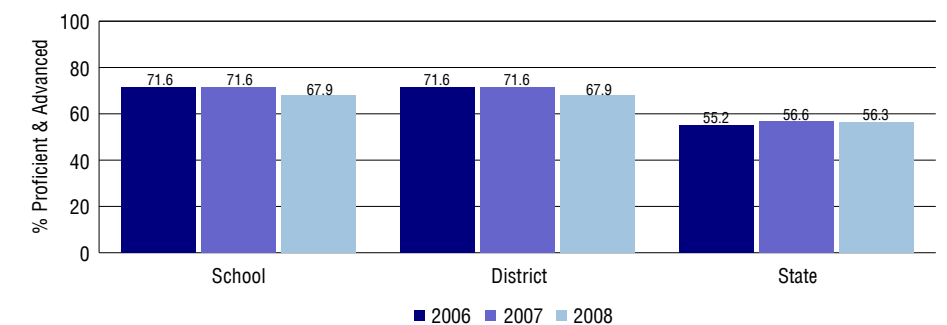
Overall Academic Performance on State Assessments

Each school in the State received a rating of "Excellent", "High", "Average", "Low", or "Unsatisfactory" for student academic performance based on 2007-2008 CSAP and COACT results. The rating is calculated using weighted percentages of each CSAP proficiency level for all content area and grade results for the school, as well as average COACT Reading, Writing, and Math Grade 11 results.

Academic Growth of Students

Each school in the State received a rating of "Low", "Typical", or "High" for student academic growth based on CSAP results. The calculation method is new for 2007-2008. The rating is calculated using student percentile scores matched over two years. More information about the Overall Academic Performance rating and Academic Growth of Students calculations can be found here: http://www.cde.state.co.us/cdeassess/SAR_Info.html.

Percent Proficient and Advanced for Middle Grades for All Content Areas



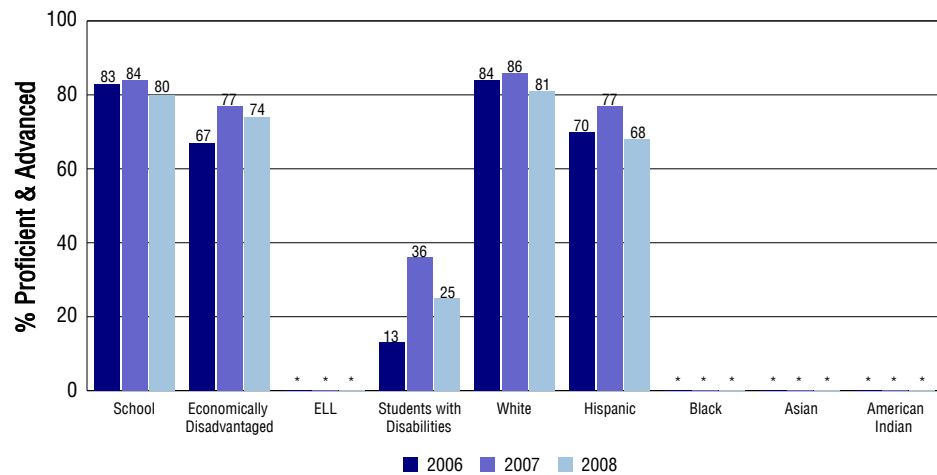
Student Test Scores Used For Calculating Overall Academic Performance

97.9%	Test Scores Counted
0.3%	Test Scores not used due to Language
1.8%	Test Scores not used due to New Student

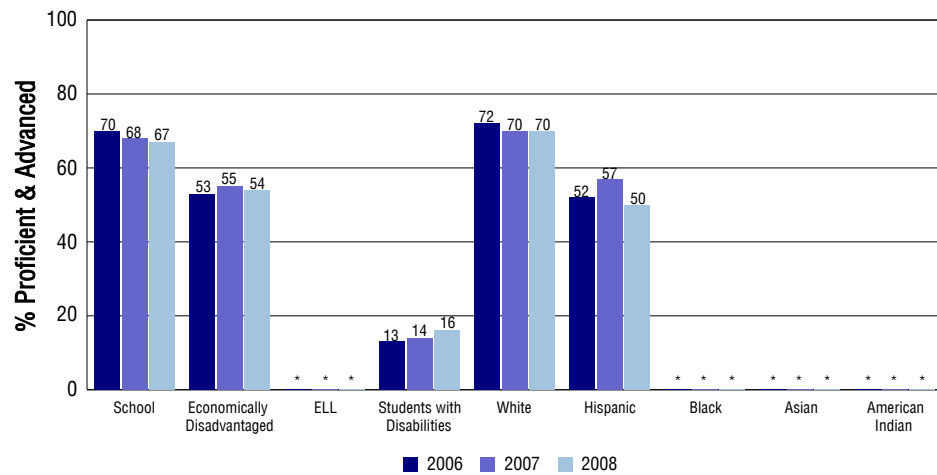
STUDENT PERFORMANCE

These graphs show the percent Proficient and Advanced trends over the past three years for Reading, Writing, and Math. Results are presented for the entire school for all reported grades as well as for different subgroups. Note: * indicates any group with less than 16 student results to be reported.

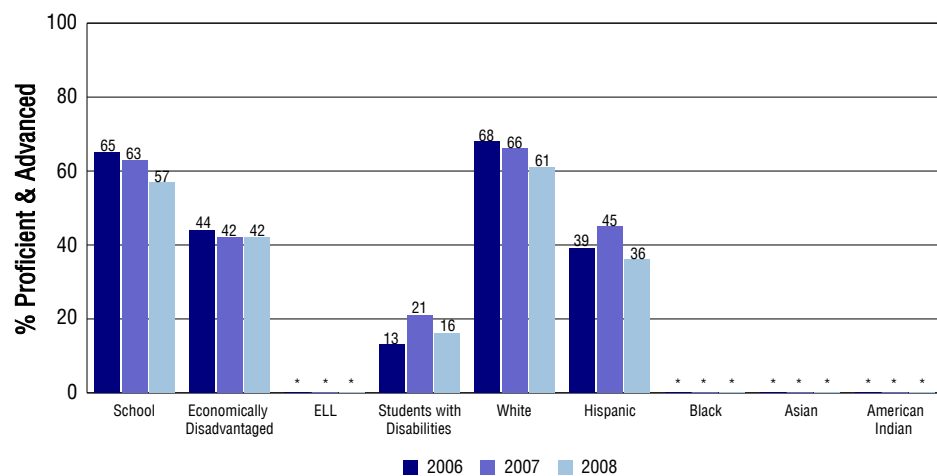
Reading



Writing



Math



SCHOOL INFORMATION

School Pride (as submitted by your district)

- MSMS has a rich academic program with rigorous core classes and exploratory offerings including band, choir, art, technology, PE, and Spanish.
- MSMS offers a wide range of after-school activities including sports, and enrichment activities.
- MSMS participation rate for Parent Teacher Conferences in 2007-2008 of 83% for the fall and 79% for spring.
- Mustang PRIDE (Positive, Respect, Integrity, Determination, Excellence) Students created cheers, adopted school areas, and designed a PRIDE banner.

School Goals (as submitted by your district)

Relationship Goal: MSMS will develop a school climate that fosters the academic, social, and emotional growth of all students. Rigor Goal: All MSMS students will complete a rigorous core academic program in Language Arts, Mathematics, Science, and Social Studies. Opportunity Goal: MSMS will offer opportunities for students, parents, and staff to build strong connections to the school through sports, extra curricular activities, and enrichments.

No Child Left Behind - Adequate Yearly Progress

Did your school make AYP in reading? Yes Math? Yes
 How many targets does your school have? 20 Met? 20

Based on this school's academic performance, your child may be eligible for one or more of the following; ask your school if your child qualifies for:

Extra academic instruction either before or after-school, or in the summer
 Mentoring

For additional information regarding Adequate Yearly Progress please visit
<http://www.cde.state.co.us/FedPrograms/ayp/index.asp>

How Manitou Springs Middle School Compares To Middle Schools Within A 75-Mile Radius

School	Program Type	Academic Performance	Academic Growth
Holmes Middle School(1)		Excellent	High
West Intergenerational Center(1)		High	Typical
Mann Middle School(1)		Average	High
Cheyenne Mountain Junior High School(2)		Excellent	Typical
North Middle School(1)		Average	Low
21st Century Charter School(3)	Charter	Low	Typical
Cheyenne Mountain Charter Academy(2)	Charter	Excellent	High
Eagleview Middle School(4)		Excellent	Typical
Globe Charter School(1)	Charter	Low	High
Colorado Springs Charter Academy(3)	Charter	Excellent	High

1 Located in Colorado Springs 11 School District.
 2 Located in Cheyenne Mountain 12 School District.
 3 Located in Charter School Institute School District.
 4 Located in Academy 20 School District.

ABOUT OUR STAFF

School Employment

Each year, your district reports to the Colorado Department of Education on the number of adults who work in your school, as well as the type of work they do. Last year, your school employed:

	Your School		District	
	Full Time	Part Time	Full Time	Part Time
Teachers	22	3	89	10
Paraprofessionals	5	0	24	4
Administrators	1	0	12	0
Other Professionals	0	4	6	4
School Support	4	0	30	16
School Counselors	1	0	4	1
School Librarians	0	0	1	0
Total Staff	40		199	

Students per Teacher Ratio

	Student Enrollment	Students per Teacher
Grade 6	115	13
Grade 7	109	13.9
Grade 8	118	17.3

Professional Experience of Teachers

	Your School	District
Average years of teaching experience	9	10
Percent of teachers teaching in the subject in which they received their degree	70%	80%
Number of teachers with Masters or Doctoral degrees	12	43
Teachers with 3 years or more of teaching experience	22	79
Teachers with less than 3 years of teaching experience	3	20
Number of professional development days	8	8

Salaries

	Your School	District	State
Average Teacher Salary	\$41,697	\$41,098	\$47,494
Average Administrator Salary	\$69,596	\$73,336	\$80,444

Principal: Stephen Paterson

Number of years as Principal at this school: 1 (New Hire 2007/2008)

Number of years as Principal at any school: 1