

SAFETY AND SCHOOL ENVIRONMENT

Non-CSAP Course Offerings

Your School Offers	does	does not
• art.....	<input checked="" type="checkbox"/>	<input type="checkbox"/>
• drama or theater.....	<input type="checkbox"/>	<input checked="" type="checkbox"/>
• music.....	<input checked="" type="checkbox"/>	<input type="checkbox"/>
• physical education.....	<input checked="" type="checkbox"/>	<input type="checkbox"/>
• opportunity for civic or community engagement.....	<input checked="" type="checkbox"/>	<input type="checkbox"/>
• internet safety program.....	<input checked="" type="checkbox"/>	<input type="checkbox"/>
• International Baccalaureate.....	<input type="checkbox"/>	<input checked="" type="checkbox"/>
• extracurricular activities.....	<input checked="" type="checkbox"/>	<input type="checkbox"/>
• athletics.....	<input checked="" type="checkbox"/>	<input type="checkbox"/>
• preschool program.....	<input type="checkbox"/>	<input checked="" type="checkbox"/>
• full-day kindergarten program.....	<input checked="" type="checkbox"/>	<input type="checkbox"/>
• before-and-after-school care program.....	<input type="checkbox"/>	<input checked="" type="checkbox"/>

Safety and Discipline

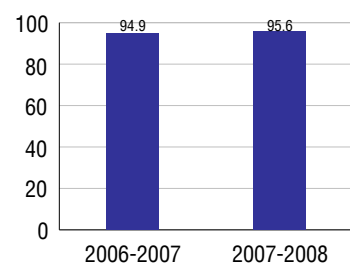
Safe schools are a top priority for parents, teachers, and communities. Your school safety and discipline record for the 2007-2008 school year is:

Type of Incident	Number of Incidents Reported	Percent of Total Incidents
Substance Abuse - Drugs		
Substance Abuse - Alcohol		
Substance Abuse - Tobacco		
Felony Assaults		
Fights		
Possession of Dangerous Weapons		
Other Violations Code of Conduct	5	100.0%

Student Attendance and School Calendar

2007-2008	Your School
Enrollment	524
Average Daily Attendance	501
Student Dropouts	N/A

Attendance Rate



Student Information Over Time

	2005-2006	2006-2007	2007-2008
Student Enrollment Stability	95.5%	94.6%	96.8%
Students Eligible for Free and Reduced Lunch	1.2 %	0.0 %	2.7 %

For more information and further details about this report, visit www.state.co.us/schools
Colorado Department of Education, 201 East Colfax Ave. Denver, CO 80203

Monument Charter Academy
1080/5093/E
1890 Willow Park Way . Monument, CO 80132 . 719-481-1950
10/20/2008

DISTRICT TAXPAYER'S REPORT

Sources of School District Revenue 2007

Local Tax Contribution	\$21,891,897
State Tax Contribution	24,975,578
Federal Grants	1,403,601
State Grants	1,430,880
Private/Partnership Grants	151,725
Other Discretionary Income	6,744,329
Total District Operating Revenue	\$56,598,010
Long Term Debt Proceeds	66,160,537
Total District Revenue	\$122,758,547
Total District Operating Revenue Per Pupil =	\$9,907
Total District Revenue Per Pupil (Including Long Term Debt) =	\$21,488
District Per Pupil Operating Revenue =	\$5,746
State Average Per Pupil Operating Revenue =	\$6,080

District Use of Funds 2007

Instructional & Instructional Support	\$32,759,990
Administration	3,991,657
Building & Facilities Maintenance	4,914,767
Operational Expenditures	5,524,697
Debt Service	6,055,092
Other Expenditures	1,211,439
Total District Operating Expenditures	\$54,457,642
Capital Expenditures	13,084,389
Total District Use of Funds	\$67,542,031

District Debt and Capital Construction & Equipment

Total Outstanding Bonded Debt	\$89,949,957
Average Annual Percentage Interest Rate on Debt	4.76%
Amount Raised from Most Recent Bond	\$56,999,977
Amount Spent on New Buildings During Last 2 Years	\$11,202,875

Accreditation

Accreditation is Colorado's primary accountability system, incorporating achievement levels, academic growth, achievement gaps, post-secondary readiness, improvement planning, and compliance. The state accredits districts and districts accredit individual schools.

District Accreditation Status for the 2007-2008 school year:

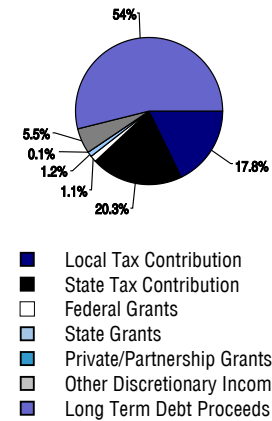
Voter Approved Funding Changes

Your community did /did not hold an election in November 2006

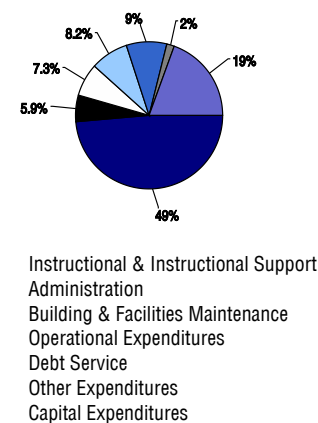
The following items have been approved by voters:

<input type="checkbox"/> TABOR Override	<input checked="" type="checkbox"/> Bond \$57,000,000	<input type="checkbox"/> Mill Levy Increase
---	---	---

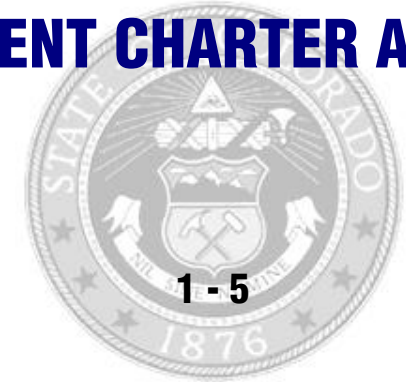
District Source of Funds 2007



District Use of Funds 2007



MONUMENT CHARTER ACADEMY



LEWIS-PALMER 38

Charter

<http://www.lewispalmer.org/>
School Accountability Report
2007-2008 School Year

School Performance Summary

Overall Academic Performance on State Assessments **Excellent**

Academic Growth of Students **Typical**

Winner of a John Irwin School of Excellence for the 2007-2008 School Year

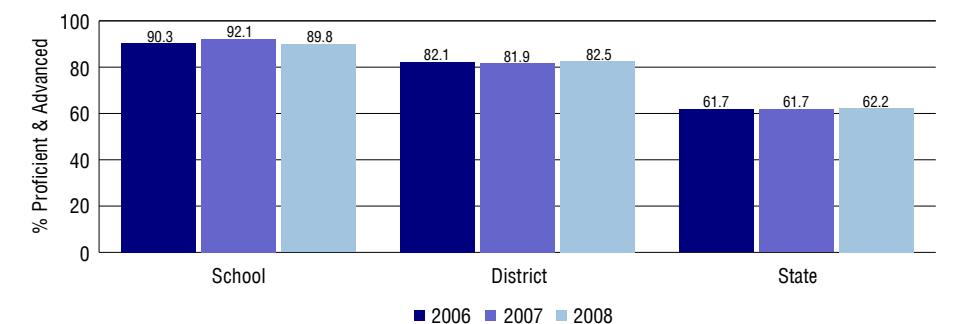
Overall Academic Performance on State Assessments

Each school in the State received a rating of "Excellent", "High", "Average", "Low", or "Unsatisfactory" for student academic performance based on 2007-2008 CSAP and COACT results. The rating is calculated using weighted percentages of each CSAP proficiency level for all content area and grade results for the school, as well as average COACT Reading, Writing, and Math Grade 11 results.

Academic Growth of Students

Each school in the State received a rating of "Low", "Typical", or "High" for student academic growth based on CSAP results. The calculation method is new for 2007-2008. The rating is calculated using student percentile scores matched over two years. More information about the Overall Academic Performance rating and Academic Growth of Students calculations can be found here: http://www.cde.state.co.us/cdeassess/SAR_Info.html.

Percent Proficient and Advanced for Elementary Grades for All Content Areas



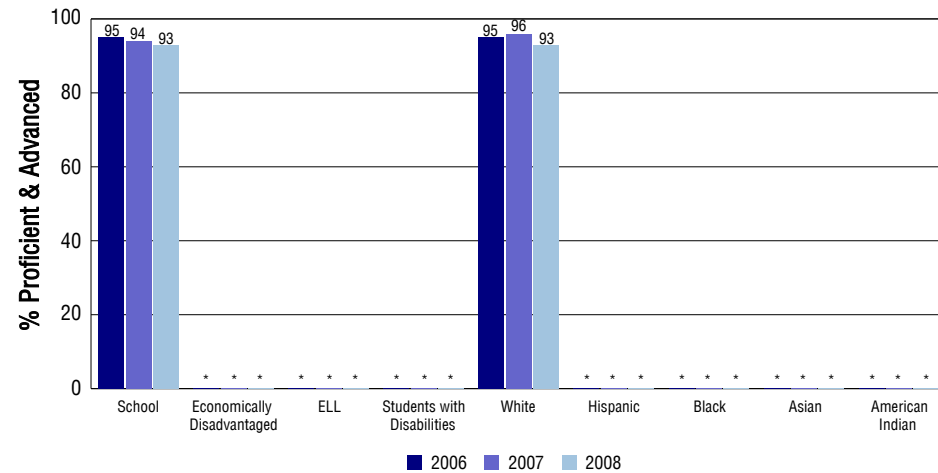
Student Test Scores Used For Calculating Overall Academic Performance

95.1%	Test Scores Counted
1.7%	Test Scores not used due to Language
3.2%	Test Scores not used due to New Student

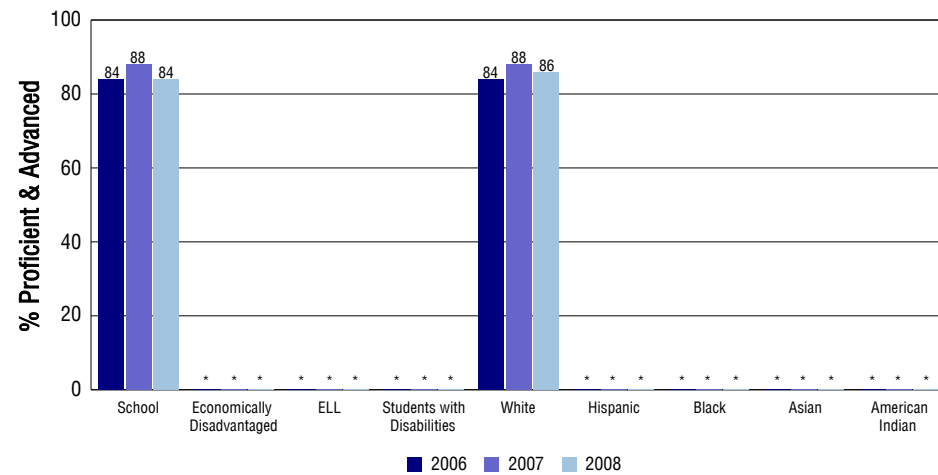
STUDENT PERFORMANCE

These graphs show the percent Proficient and Advanced trends over the past three years for Reading, Writing, and Math. Results are presented for the entire school for all reported grades as well as for different subgroups. Note: * indicates any group with less than 16 student results to be reported.

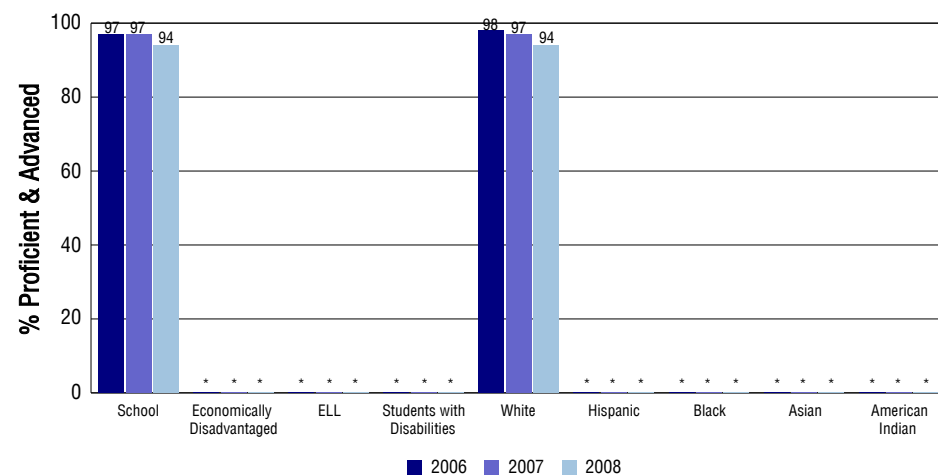
Reading



Writing



Math



SCHOOL INFORMATION

School Pride (as submitted by your district)

- Monument Academy has been a site for Imagination Celebration, sponsored by the Pikes Peak Center, creative advocate for the Arts, during the past three years.
- MA participates in many extracurricular competitions such as Brain Bowl, Technology Knowledge Bowl, National Geography Bee, and the Continental Math League.
- Both elementary and middle school students have reached out to our community by helping others in need.
- Special patriotic assemblies have been held during the year at Monument Academy to inspire and highlight our rich American heritage.

School Goals (as submitted by your district)

Monument Academy set a goal of clear learning processes for our youngest students in the area of early literacy. Collecting data via DIBELS, RIGGS Orthography, running records, McCall Harby for reading comprehension, and WRAT testing guides our teachers in providing solid learning experiences. Through mandated teacher workshops, each para and teacher receives additional training in phonemic awareness, alphabetic principle, reading comprehension, and vocabulary acquisition. We will evaluate our Reading curriculum for kindergarten through 2nd grade using benchmarks, our RIGGS spelling program, historical evidence and evaluation to maximize instructional strategies.

No Child Left Behind - Adequate Yearly Progress

Did your school make AYP in reading?	Yes	Math?	Yes
How many targets does your school have?	12	Met?	12

Based on this school's academic performance, your child may be eligible for one or more of the following; ask your school if your child qualifies for:

Extra academic instruction either before or after-school, or in the summer
Mentoring

For additional information regarding Adequate Yearly Progress please visit
<http://www.cde.state.co.us/FedPrograms/ayp/index.asp>

How Monument Charter Academy Compares To Elementary Schools Within A 75-Mile Radius

School	Program Type	Academic Performance	Academic Growth
Lewis-Palmer Elementary School		Excellent	High
Grace Best Elementary School		High	Typical
Palmer Lake Elementary School		High	High
Prairie Winds Elementary School		Excellent	High
Antelope Trails Elementary School(1)		Excellent	Typical
The Classical Academy Charter(1)	Charter	High	Typical
Discovery Canyon Campus School(1)		High	Typical
The Da Vinci Academy School(1)	Magnet	High	Typical
Ray E Kilmer Elementary School		Excellent	Typical
Larkspur Elementary School(2)		High	Typical

1 Located in Academy 20 School District.

2 Located in Douglas County RE 1 School District.

ABOUT OUR STAFF

School Employment

Each year, your district reports to the Colorado Department of Education on the number of adults who work in your school, as well as the type of work they do. Last year, your school employed:

	Your School		District	
	Full Time	Part Time	Full Time	Part Time
Teachers	54	5	396	26
Paraprofessionals	5	6	63	13
Administrators	1	1	26	1
Other Professionals	2	4	37	25
School Support	4	11	144	51
School Counselors	1	0	17	0
School Librarians	1	0	5	0
Total Staff	94		802	

Students per Teacher Ratio

	Student Enrollment	Students per Teacher
Grade 1	76	15.6
Grade 2	67	11
Grade 3	75	13.9
Grade 4	72	11.2
Grade 5	69	10.7

Professional Experience of Teachers

	Your School	District
Average years of teaching experience	9	10
Percent of teachers teaching in the subject in which they received their degree	N/A	N/A
Number of teachers with Masters or Doctoral degrees	21	209
Teachers with 3 years or more of teaching experience	45	332
Teachers with less than 3 years of teaching experience	14	90
Number of professional development days	10	7

Salaries

	Your School	District	State
Average Teacher Salary	\$32,956	\$43,113	\$47,494
Average Administrator Salary	\$61,647	\$89,675	\$80,444

Principal: Jane Lundeen

Number of years as Principal at this school: 4

Number of years as Principal at any school: 6