

SAFETY AND SCHOOL ENVIRONMENT

Non-CSAP Course Offerings

Your School Offers	does	does not
• art.....	<input checked="" type="checkbox"/>	<input type="checkbox"/>
• drama or theater.....	<input type="checkbox"/>	<input checked="" type="checkbox"/>
• music.....	<input checked="" type="checkbox"/>	<input type="checkbox"/>
• physical education.....	<input checked="" type="checkbox"/>	<input type="checkbox"/>
• opportunity for civic or community engagement.....	<input checked="" type="checkbox"/>	<input type="checkbox"/>
• internet safety program.....	<input checked="" type="checkbox"/>	<input type="checkbox"/>
• International Baccalaureate.....	<input type="checkbox"/>	<input checked="" type="checkbox"/>
• extracurricular activities.....	<input checked="" type="checkbox"/>	<input type="checkbox"/>
• athletics.....	<input checked="" type="checkbox"/>	<input type="checkbox"/>
• preschool program.....	<input type="checkbox"/>	<input checked="" type="checkbox"/>
• full-day kindergarten program.....	<input checked="" type="checkbox"/>	<input type="checkbox"/>
• before-and-after-school care program.....	<input checked="" type="checkbox"/>	<input type="checkbox"/>

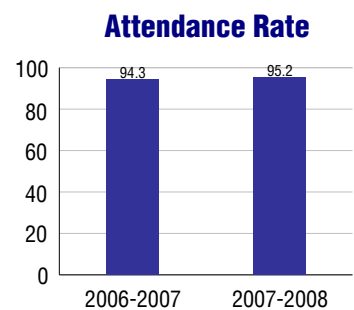
Safety and Discipline

Safe schools are a top priority for parents, teachers, and communities. Your school safety and discipline record for the 2007-2008 school year is:

Type of Incident	Number of Incidents Reported	Percent of Total Incidents
Substance Abuse - Drugs		
Substance Abuse - Alcohol		
Substance Abuse - Tobacco		
Felony Assaults		
Fights		
Possession of Dangerous Weapons		
Other Violations Code of Conduct	18	100.0%

Student Attendance and School Calendar

2007-2008	Your School
Enrollment	271
Average Daily Attendance	258
Student Dropouts	N/A



Student Information Over Time

	2005-2006	2006-2007	2007-2008
Student Enrollment Stability	91.3%	93.4%	94.8%
Students Eligible for Free and Reduced Lunch	45.0 %	46.9 %	48.0 %

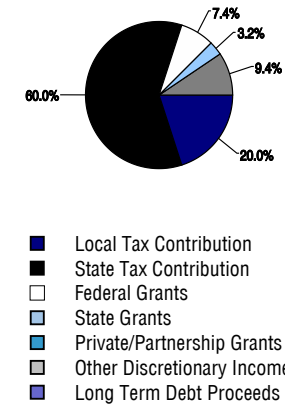
For more information and further details about this report, visit www.state.co.us/schools
 Colorado Department of Education, 201 East Colfax Ave. Denver, CO 80203
North Elementary School
 0990/6362/E
 209 Leta Drive . Colorado Springs, CO 80911 . 719-391-3375
 10/20/2008

DISTRICT TAXPAYER'S REPORT

Sources of School District Revenue 2007

Local Tax Contribution	\$13,798,865
State Tax Contribution	41,367,840
Federal Grants	5,115,419
State Grants	2,185,465
Private/Partnership Grants	0
Other Discretionary Income	6,443,392
Total District Operating Revenue	\$68,910,981
Long Term Debt Proceeds	0
Total District Revenue	\$68,910,981
Total District Operating Revenue Per Pupil =	\$8,665
Total District Revenue Per Pupil (Including Long Term Debt) =	\$8,665
District Per Pupil Operating Revenue =	\$5,663
State Average Per Pupil Operating Revenue =	\$6,080

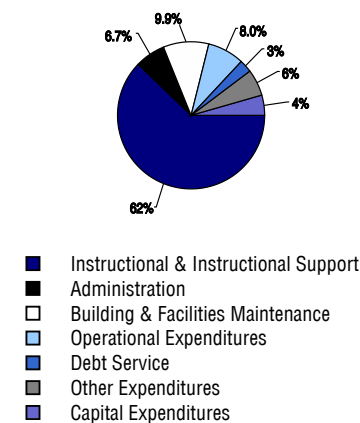
District Source of Funds 2007



District Use of Funds 2007

Instructional & Instructional Support	\$42,608,836
Administration	4,617,041
Building & Facilities Maintenance	6,801,843
Operational Expenditures	5,452,553
Debt Service	1,942,091
Other Expenditures	4,119,642
Total District Operating Expenditures	\$65,542,006
Capital Expenditures	2,952,581
Total District Use of Funds	\$68,494,587

District Use of Funds 2007



District Debt and Capital Construction & Equipment

Total Outstanding Bonded Debt	\$13,363,166
Average Annual Percentage Interest Rate on Debt	5.01%
Amount Raised from Most Recent Bond	\$7,900,000
Amount Spent on New Buildings During Last 2 Years	\$869,944

Accreditation

Accreditation is Colorado's primary accountability system, incorporating achievement levels, academic growth, achievement gaps, post-secondary readiness, improvement planning, and compliance. The state accredits districts and districts accredit individual schools.

District Accreditation Status for the 2007-2008 school year:

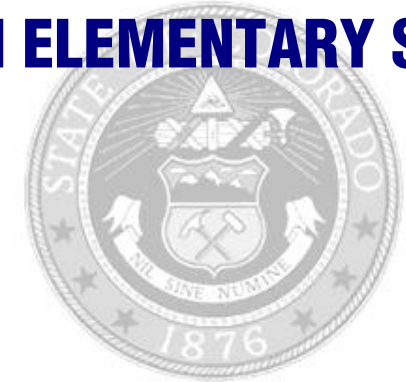
Voter Approved Funding Changes

Your community did /did not hold an election in November 2006

The following items have been approved by voters:

- TABOR Override
- Bond
- Mill Levy Increase

NORTH ELEMENTARY SCHOOL



WIDEFIELD 3

north.wsd3.org

School Accountability Report 2007-2008 School Year

School Performance Summary

Overall Academic Performance on State Assessments **Average**

Academic Growth of Students **Typical**

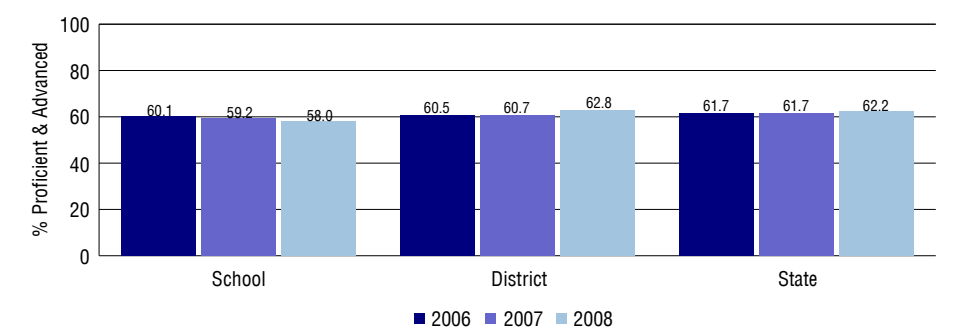
Overall Academic Performance on State Assessments

Each school in the State received a rating of "Excellent", "High", "Average", "Low", or "Unsatisfactory" for student academic performance based on 2007-2008 CSAP and COACT results. The rating is calculated using weighted percentages of each CSAP proficiency level for all content area and grade results for the school, as well as average COACT Reading, Writing, and Math Grade 11 results.

Academic Growth of Students

Each school in the State received a rating of "Low", "Typical", or "High" for student academic growth based on CSAP results. The calculation method is new for 2007-2008. The rating is calculated using student percentile scores matched over two years. More information about the Overall Academic Performance rating and Academic Growth of Students calculations can be found here: http://www.cde.state.co.us/cdeassess/SAR_Info.html.

Percent Proficient and Advanced for Elementary Grades for All Content Areas



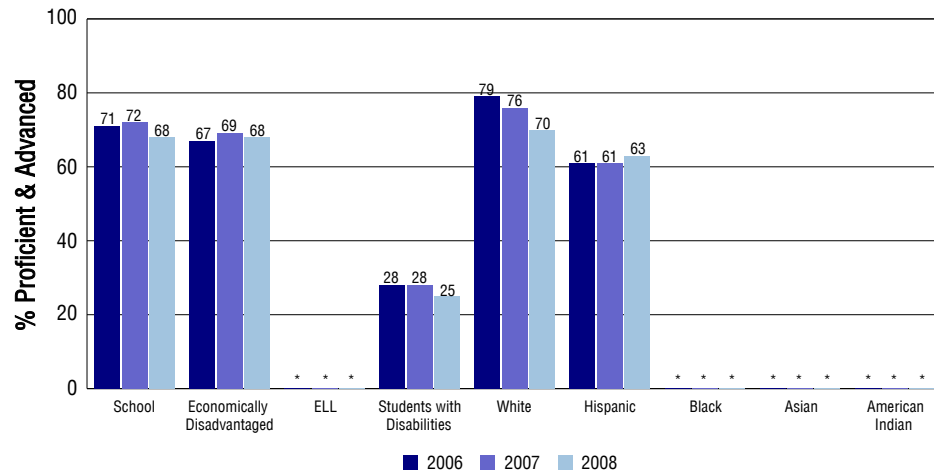
Student Test Scores Used For Calculating Overall Academic Performance

92.2%	Test Scores Counted
1.1%	Test Scores not used due to Language
6.7%	Test Scores not used due to New Student

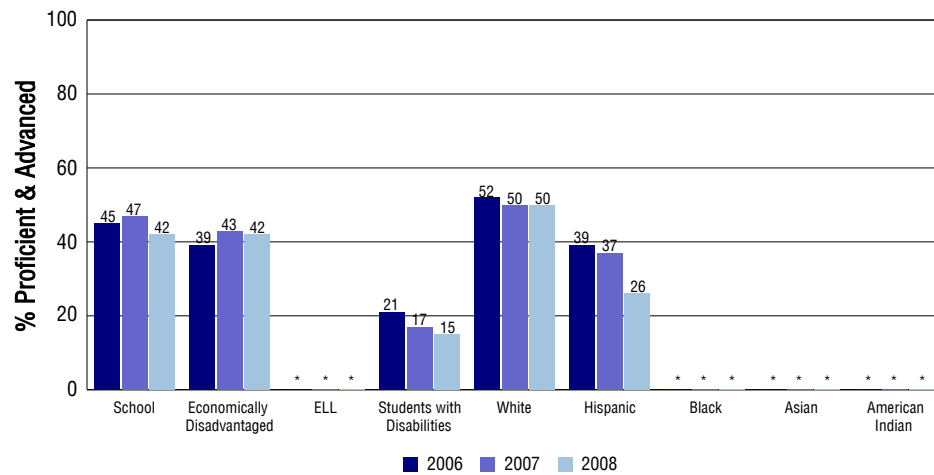
STUDENT PERFORMANCE

These graphs show the percent Proficient and Advanced trends over the past three years for Reading, Writing, and Math. Results are presented for the entire school for all reported grades as well as for different subgroups. Note: * indicates any group with less than 16 student results to be reported.

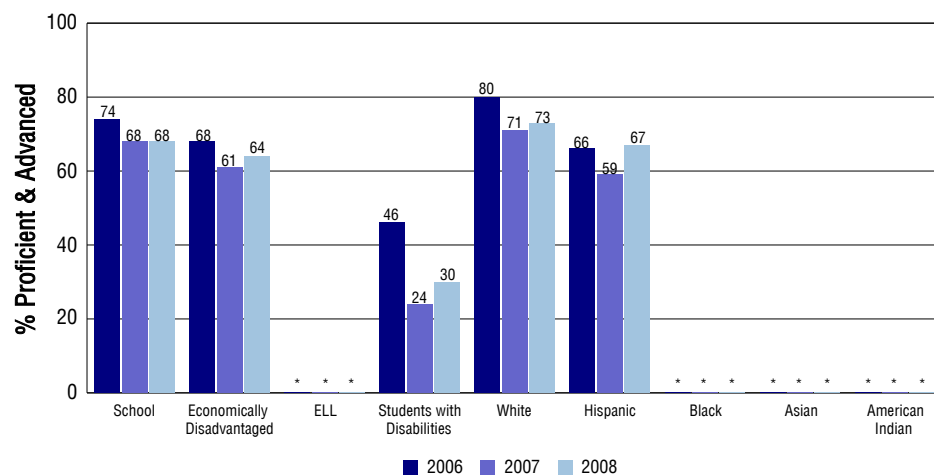
Reading



Writing



Math



SCHOOL INFORMATION

School Pride (as submitted by your district)

- 90% of parents surveyed give North a grade of A or B.
- Kindergarten-3rd grade DIBELS improvement three years in a row.
- Integration of technology into the classrooms.
-

School Goals (as submitted by your district)

We put Colorado Reading First Grant knowledge into practice to improve the number of students reading at or above grade level. We will use explicit instruction and place students into small groups based on individual needs. The collection of student achievement data will guide our instruction. Lastly we will use Step Up to Writing and Writing Alive strategies to improve our students' writing ability.

No Child Left Behind - Adequate Yearly Progress

Did your school make AYP in reading?	Yes	Math?	Yes
How many targets does your school have?	24	Met?	24

Based on this school's academic performance, your child may be eligible for one or more of the following; ask your school if your child qualifies for:

Extra academic instruction either before or after-school, or in the summer
Mentoring

For additional information regarding Adequate Yearly Progress please visit
<http://www.cde.state.co.us/FedPrograms/ayp/index.asp>

How North Elementary School Compares To Elementary Schools Within A 75-Mile Radius

School	Program Type	Academic Performance	Academic Growth
Pinello Elementary School		Average	Typical
Widefield Elementary School		Average	Typical
French Elementary School		Average	Typical
Soaring Eagles Elementary School(1)		High	Typical
Venetucci Elementary School		Average	High
Turman Elementary School(1)		Low	Typical
Giberson Elementary School(1)		Low	Low
Talbott Elementary School		Average	High
Bricker Elementary School(1)		Average	Typical
Stratmoor Hills Elementary School(1)		Average	High

1 Located in Harrison 2 School District.

ABOUT OUR STAFF

School Employment

Each year, your district reports to the Colorado Department of Education on the number of adults who work in your school, as well as the type of work they do. Last year, your school employed:

	Your School		District	
	Full Time	Part Time	Full Time	Part Time
Teachers	19	7	509	21
Paraprofessionals	5	1	115	41
Administrators	1	1	43	1
Other Professionals	1	2	57	19
School Support	4	2	200	62
School Counselors	1	0	26	3
School Librarians	0	0	6	0
Total Staff	43		1084	

Students per Teacher Ratio

	Student Enrollment	Students per Teacher
Grade 1	42	12.7
Grade 2	36	11.3
Grade 3	39	12.2
Grade 4	40	12.6
Grade 5	41	12.9
Grade 6	40	14.9

Professional Experience of Teachers

	Your School	District
Average years of teaching experience	10	10
Percent of teachers teaching in the subject in which they received their degree	N/A	N/A
Number of teachers with Masters or Doctoral degrees	10	236
Teachers with 3 years or more of teaching experience	17	403
Teachers with less than 3 years of teaching experience	9	127
Number of professional development days	8	9

Salaries

	Your School	District	State
Average Teacher Salary	\$41,779	\$44,667	\$47,494
Average Administrator Salary	\$66,244	\$83,050	\$80,444

Principal: Paul Macrenato

Number of years as Principal at this school: 1 (New Hire 2007/2008)

Number of years as Principal at any school: 1