

# SAFETY AND SCHOOL ENVIRONMENT

## Non-CSAP Course Offerings

Your School Offers	does	does not
• art.....	<input checked="" type="checkbox"/>	<input type="checkbox"/>
• drama or theater.....	<input checked="" type="checkbox"/>	<input type="checkbox"/>
• music.....	<input checked="" type="checkbox"/>	<input type="checkbox"/>
• physical education.....	<input checked="" type="checkbox"/>	<input type="checkbox"/>
• opportunity for civic or community engagement.....	<input checked="" type="checkbox"/>	<input type="checkbox"/>
• internet safety program.....	<input checked="" type="checkbox"/>	<input type="checkbox"/>
• International Baccalaureate.....	<input checked="" type="checkbox"/>	<input type="checkbox"/>
• extracurricular activities.....	<input checked="" type="checkbox"/>	<input type="checkbox"/>
• athletics.....	<input checked="" type="checkbox"/>	<input type="checkbox"/>
• career and technical education.....	<input checked="" type="checkbox"/>	<input type="checkbox"/>
• advanced placement.....	<input checked="" type="checkbox"/>	<input type="checkbox"/>
• honors.....	<input checked="" type="checkbox"/>	<input type="checkbox"/>

## Safety and Discipline

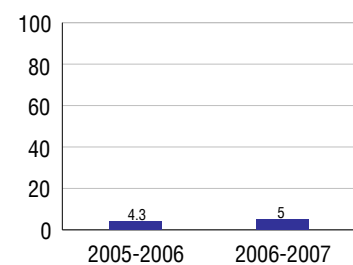
Safe schools are a top priority for parents, teachers, and communities. Your school safety and discipline record for the 2007-2008 school year is:

Type of Incident	Number of Incidents Reported	Percent of Total Incidents
Substance Abuse - Drugs	2	3.2%
Substance Abuse - Alcohol	2	3.2%
Substance Abuse - Tobacco		
Felony Assaults		
Fights		
Possession of Dangerous Weapons		
Other Violations Code of Conduct	58	93.5%

## Student Attendance and School Calendar

2007-2008	Your School
Enrollment	2,062
Average Daily Attendance	1,827
Student Dropouts	5.0%

## Dropout Rate



## Student Information Over Time

	2005-2006	2006-2007	2007-2008
Student Enrollment Stability	90.4%	91.2%	92.0%
Students Eligible for Free and Reduced Lunch	25.2 %	26.8 %	29.0 %

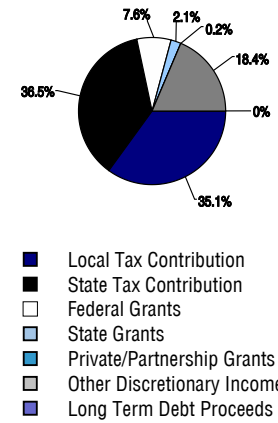
For more information and further details about this report, visit [www.state.co.us/schools](http://www.state.co.us/schools)  
 Colorado Department of Education, 201 East Colfax Ave. Denver, CO 80203  
**Palmer High School**  
 1010/6680/H  
 301 North Nevada Avenue . Colorado Springs, CO 80903 . 719-328-5000  
 10/20/2008

# DISTRICT TAXPAYER'S REPORT

## Sources of School District Revenue 2007

Local Tax Contribution	\$113,583,627
State Tax Contribution	118,186,780
Federal Grants	24,713,529
State Grants	6,766,930
Private/Partnership Grants	620,835
Other Discretionary Income	59,748,276
<b>Total District Operating Revenue</b>	<b>\$323,619,977</b>
Long Term Debt Proceeds	226,133
<b>Total District Revenue</b>	<b>\$323,846,110</b>
<b>Total District Operating Revenue Per Pupil =</b>	<b>\$11,281</b>
<b>Total District Revenue Per Pupil (Including Long Term Debt) =</b>	<b>\$11,289</b>
<b>District Per Pupil Operating Revenue =</b>	<b>\$5,934</b>
<b>State Average Per Pupil Operating Revenue =</b>	<b>\$6,080</b>

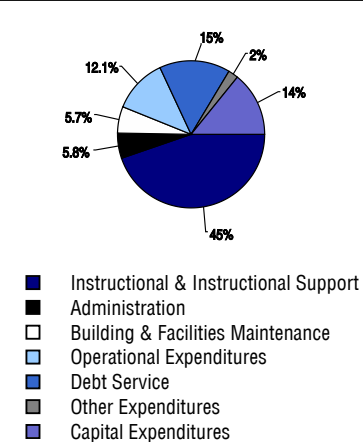
## District Source of Funds 2007



## District Use of Funds 2007

Instructional & Instructional Support	\$182,554,407
Administration	23,654,864
Building & Facilities Maintenance	23,340,275
Operational Expenditures	49,414,159
Debt Service	63,437,095
Other Expenditures	8,971,654
<b>Total District Operating Expenditures</b>	<b>\$351,372,454</b>
Capital Expenditures	58,096,235
<b>Total District Use of Funds</b>	<b>\$409,468,689</b>

## District Use of Funds 2007



## District Debt and Capital Construction & Equipment

Total Outstanding Bonded Debt	\$205,519,973
Average Annual Percentage Interest Rate on Debt	5.28%
Amount Raised from Most Recent Bond	\$131,700,000
Amount Spent on New Buildings During Last 2 Years	\$31,201,211

## Accreditation

Accreditation is Colorado's primary accountability system, incorporating achievement levels, academic growth, achievement gaps, post-secondary readiness, improvement planning, and compliance. The state accredits districts and districts accredit individual schools.

District Accreditation Status for the 2007-2008 school year:

## Voter Approved Funding Changes

Your community did  /did not  hold an election in November 2006

The following items have been approved by voters:

TABOR Override

Bond

Mill Levy Increase

# PALMER HIGH SCHOOL



**COLORADO SPRINGS 11**

<http://www.cssd11.k12.co.us/>

**School Accountability Report  
2007-2008 School Year**

## School Performance Summary

**Overall Academic Performance on State Assessments** **High**

**Academic Growth of Students** **High**

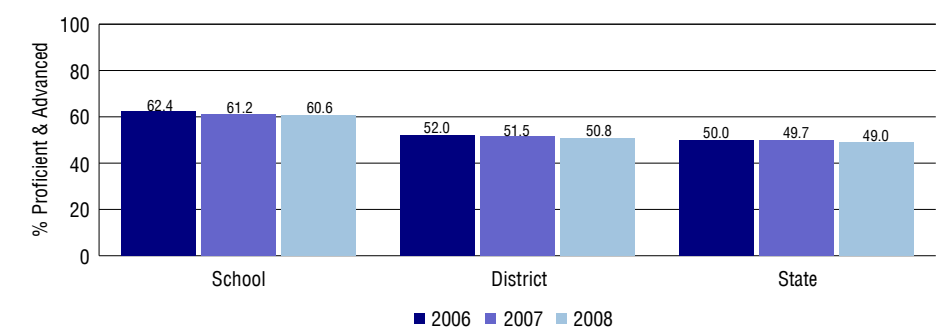
### Overall Academic Performance on State Assessments

Each school in the State received a rating of "Excellent", "High", "Average", "Low", or "Unsatisfactory" for student academic performance based on 2007-2008 CSAP and COACT results. The rating is calculated using weighted percentages of each CSAP proficiency level for all content area and grade results for the school, as well as average COACT Reading, Writing, and Math Grade 11 results.

### Academic Growth of Students

Each school in the State received a rating of "Low", "Typical", or "High" for student academic growth based on CSAP results. The calculation method is new for 2007-2008. The rating is calculated using student percentile scores matched over two years. More information about the Overall Academic Performance rating and Academic Growth of Students calculations can be found here: [http://www.cde.state.co.us/cdeassess/SAR\\_Info.html](http://www.cde.state.co.us/cdeassess/SAR_Info.html).

## Percent Proficient and Advanced for High Grades for All Content Areas



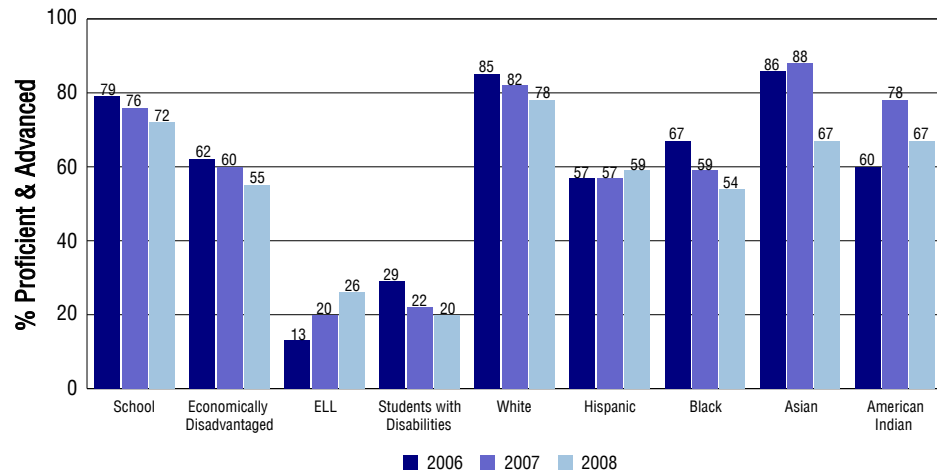
## Student Test Scores Used For Calculating Overall Academic Performance

92.4%	Test Scores Counted
1.8%	Test Scores not used due to Language
5.8%	Test Scores not used due to New Student

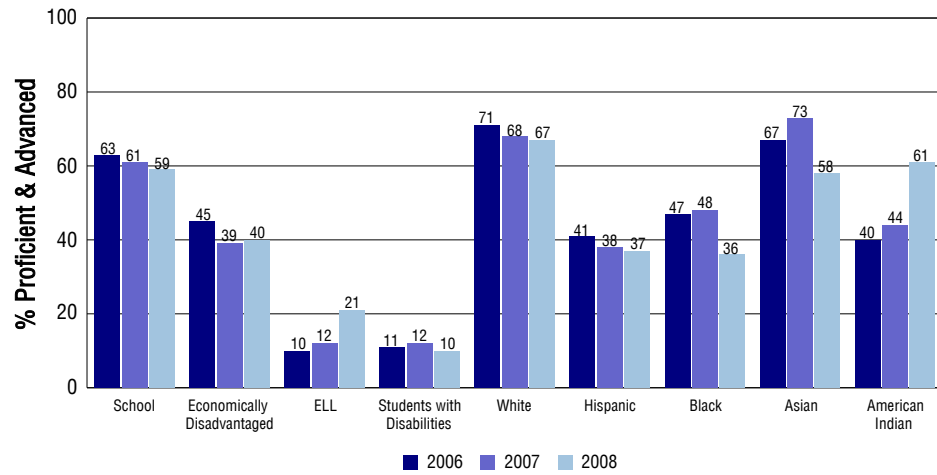
## STUDENT PERFORMANCE

These graphs show the percent Proficient and Advanced trends over the past three years for Reading, Writing, and Math. Results are presented for the entire school for all reported grades as well as for different subgroups. Note: \* indicates any group with less than 16 student results to be reported.

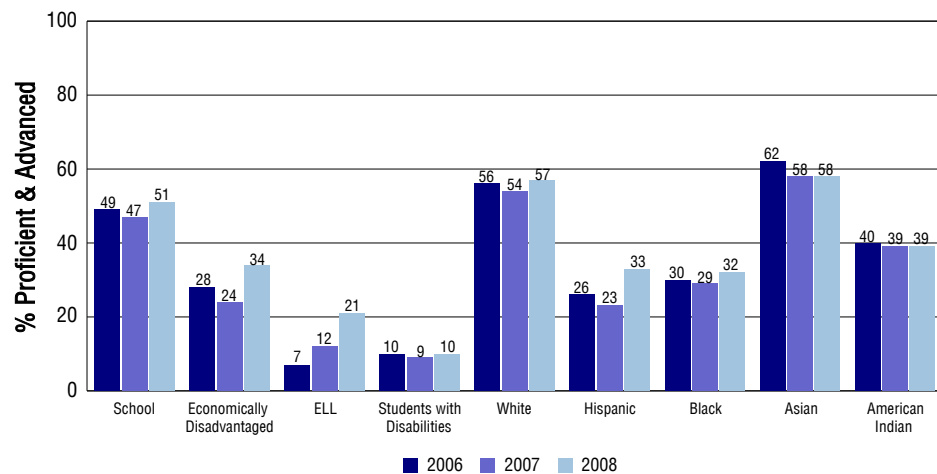
### Reading



### Writing



### Math



## SCHOOL INFORMATION

### School Pride (as submitted by your district)

- State of Art Technology incorporated into classrooms and labs
- IB and AP Honors program that reaches to all students
- Tutoring center for Literacy and Math offered from 7:45-3:30 everyday in support of RTI model
- Our students participate in a variety of extracurricular opportunities including science competitions, music, sports, student council and a variety of clubs

### School Goals (as submitted by your district)

Our school will center staff development around ways of implementing 21st century skills into the classroom that will help to raise student achievement

### No Child Left Behind - Adequate Yearly Progress

Did your school make AYP in reading?	No	Math?	Yes
Did your school make the graduation rate targets?	No		
How many targets does your school have?	34	Met?	32

**Based on this school's academic performance, your child may be eligible for one or more of the following; ask your school if your child qualifies for:**

Extra academic instruction either before or after-school, or in the summer  
Mentoring

For additional information regarding Adequate Yearly Progress please visit  
<http://www.cde.state.co.us/FedPrograms/ayp/index.asp>

### How Palmer High School Compares To High Schools Within A 75-Mile Radius

School	Program Type	Academic Performance	Academic Growth
21st Century Charter School(1)	Charter	Average	Typical
The Vanguard School(2)	Charter	Excellent	High
Shivers Academy Charter School(3)	Charter	No Rating	No Rating
Wasson High School		Average	Typical
Cheyenne Mountain High School(2)		Excellent	High
Harrison High School(3)		Low	Typical
Coronado High School		High	Typical
Mitchell High School		Average	Typical
Colorado Springs Early Colleges(1)	Charter	High	Typical
Civa Charter Academy	Charter, Alternative	Average	Typical

1 Located in Charter School Institute School District.  
2 Located in Cheyenne Mountain 12 School District.  
3 Located in Harrison 2 School District.

## ABOUT OUR STAFF

### School Employment

Each year, your district reports to the Colorado Department of Education on the number of adults who work in your school, as well as the type of work they do. Last year, your school employed:

	Your School		District	
	Full Time	Part Time	Full Time	Part Time
Teachers	99	8	1790	87
Paraprofessionals	25	1	580	35
Administrators	5	1	157	9
Other Professionals	4	7	260	83
School Support	28	8	678	314
School Counselors	6	0	41	4
School Librarians	2	0	58	4
<b>Total Staff</b>	192		4082	

### Students per Teacher Ratio

	Student Enrollment	Students per Teacher
Grade 9	509	20.2
Grade 10	465	17.7
Grade 11	500	19.1
Grade 12	588	22.9

### Professional Experience of Teachers

	Your School	District
Average years of teaching experience	10	9
Percent of teachers teaching in the subject in which they received their degree	77%	66%
Number of teachers with Masters or Doctoral degrees	82	1100
Teachers with 3 years or more of teaching experience	85	1314
Teachers with less than 3 years of teaching experience	22	563
Number of professional development days	9	8

### Salaries

	Your School	District	State
Average Teacher Salary	\$49,136	\$46,064	\$47,494
Average Administrator Salary	\$76,736	\$79,793	\$80,444

**Principal:** Thomas Kelly Jr

**Number of years as Principal at this school:** 3

**Number of years as Principal at any school:** 3