

SAFETY AND SCHOOL ENVIRONMENT

Non-CSAP Course Offerings

Your School Offers	does	does not
• art.....	<input checked="" type="checkbox"/>	<input type="checkbox"/>
• drama or theater.....	<input type="checkbox"/>	<input checked="" type="checkbox"/>
• music.....	<input checked="" type="checkbox"/>	<input type="checkbox"/>
• physical education.....	<input checked="" type="checkbox"/>	<input type="checkbox"/>
• opportunity for civic or community engagement.....	<input checked="" type="checkbox"/>	<input type="checkbox"/>
• internet safety program.....	<input checked="" type="checkbox"/>	<input type="checkbox"/>
• International Baccalaureate.....	<input type="checkbox"/>	<input checked="" type="checkbox"/>
• extracurricular activities.....	<input checked="" type="checkbox"/>	<input type="checkbox"/>
• athletics.....	<input checked="" type="checkbox"/>	<input type="checkbox"/>
• career and technical education.....	<input checked="" type="checkbox"/>	<input type="checkbox"/>
• honors.....	<input type="checkbox"/>	<input checked="" type="checkbox"/>

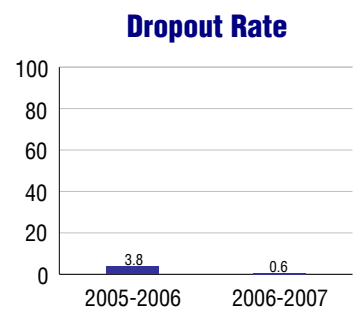
Safety and Discipline

Safe schools are a top priority for parents, teachers, and communities. Your school safety and discipline record for the 2007-2008 school year is:

Type of Incident	Number of Incidents Reported	Percent of Total Incidents
Substance Abuse - Drugs	2	0.5%
Substance Abuse - Alcohol		
Substance Abuse - Tobacco	1	0.3%
Felony Assaults		
Fights	87	22.3%
Possession of Dangerous Weapons	3	0.8%
Other Violations Code of Conduct	297	76.2%

Student Attendance and School Calendar

2007-2008	Your School
Enrollment	658
Average Daily Attendance	605
Student Dropouts	0.6%



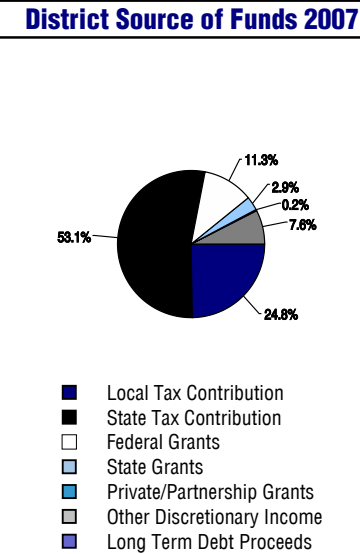
Student Information Over Time

	2005-2006	2006-2007	2007-2008
Student Enrollment Stability	91.6%	92.0%	93.2%
Students Eligible for Free and Reduced Lunch	68.8 %	71.0 %	72.3 %

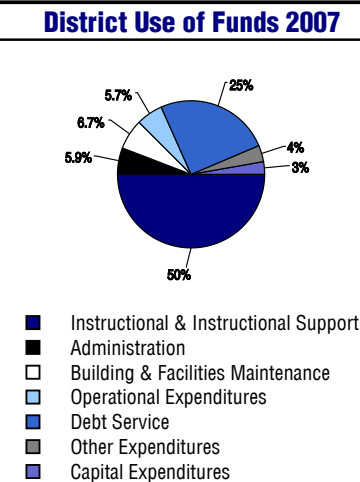
For more information and further details about this report, visit www.state.co.us/schools
 Colorado Department of Education, 201 East Colfax Ave. Denver, CO 80203
Panorama Middle School
 0980/6686/M
 2145 South Chelton . Colorado Springs, CO 80916 . 719-579-3220
 10/20/2008

DISTRICT TAXPAYER'S REPORT

Sources of School District Revenue	2007
Local Tax Contribution	\$25,649,648
State Tax Contribution	54,792,326
Federal Grants	11,684,958
State Grants	3,005,272
Private/Partnership Grants	233,124
Other Discretionary Income	7,867,774
Total District Operating Revenue	\$103,233,102
Long Term Debt Proceeds	0
Total District Revenue	\$103,233,102
Total District Operating Revenue Per Pupil =	\$9,939
Total District Revenue Per Pupil (Including Long Term Debt) =	\$9,939
District Per Pupil Operating Revenue =	\$6,167
State Average Per Pupil Operating Revenue =	\$6,080



District Use of Funds	2007
Instructional & Instructional Support	\$62,760,266
Administration	7,419,965
Building & Facilities Maintenance	8,364,383
Operational Expenditures	7,201,191
Debt Service	31,770,220
Other Expenditures	4,469,015
Total District Operating Expenditures	\$121,985,040
Capital Expenditures	3,507,411
Total District Use of Funds	\$125,492,451



District Debt and Capital Construction & Equipment

Total Outstanding Bonded Debt	\$76,720,000
Average Annual Percentage Interest Rate on Debt	4.99%
Amount Raised from Most Recent Bond	\$60,000,000
Amount Spent on New Buildings During Last 2 Years	\$3,193,517

Accreditation

Accreditation is Colorado's primary accountability system, incorporating achievement levels, academic growth, achievement gaps, post-secondary readiness, improvement planning, and compliance. The state accredits districts and districts accredit individual schools.

District Accreditation Status for the 2007-2008 school year: Notice with Support

Voter Approved Funding Changes

Your community did /did not hold an election in November 2006

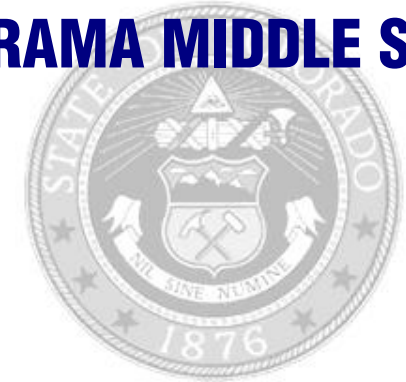
The following items have been approved by voters:

TABOR Override

Bond

Mill Levy Increase

PANORAMA MIDDLE SCHOOL



HARRISON 2

www.hsd2.org

School Accountability Report 2007-2008 School Year

School Performance Summary

Overall Academic Performance on State Assessments **Average**

Academic Growth of Students **Typical**

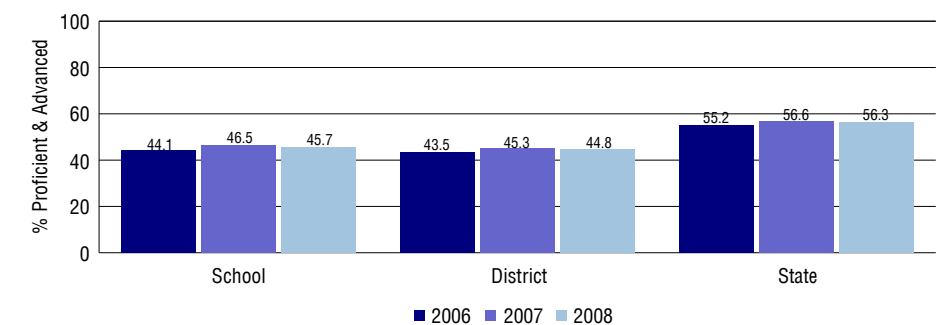
Overall Academic Performance on State Assessments

Each school in the State received a rating of "Excellent", "High", "Average", "Low", or "Unsatisfactory" for student academic performance based on 2007-2008 CSAP and COACT results. The rating is calculated using weighted percentages of each CSAP proficiency level for all content area and grade results for the school, as well as average COACT Reading, Writing, and Math Grade 11 results.

Academic Growth of Students

Each school in the State received a rating of "Low", "Typical", or "High" for student academic growth based on CSAP results. The calculation method is new for 2007-2008. The rating is calculated using student percentile scores matched over two years. More information about the Overall Academic Performance rating and Academic Growth of Students calculations can be found here: http://www.cde.state.co.us/cdeassess/SAR_Info.html.

Percent Proficient and Advanced for Middle Grades for All Content Areas



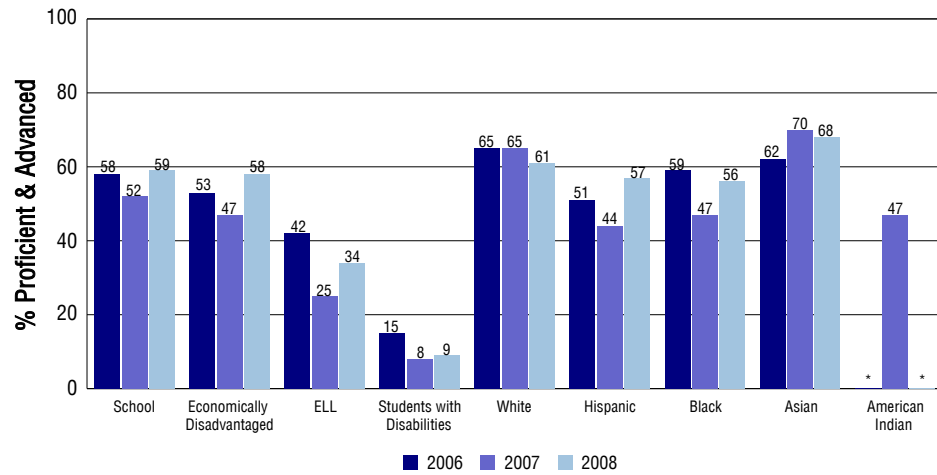
Student Test Scores Used For Calculating Overall Academic Performance

92.7%	Test Scores Counted
0.9%	Test Scores not used due to Language
6.4%	Test Scores not used due to New Student

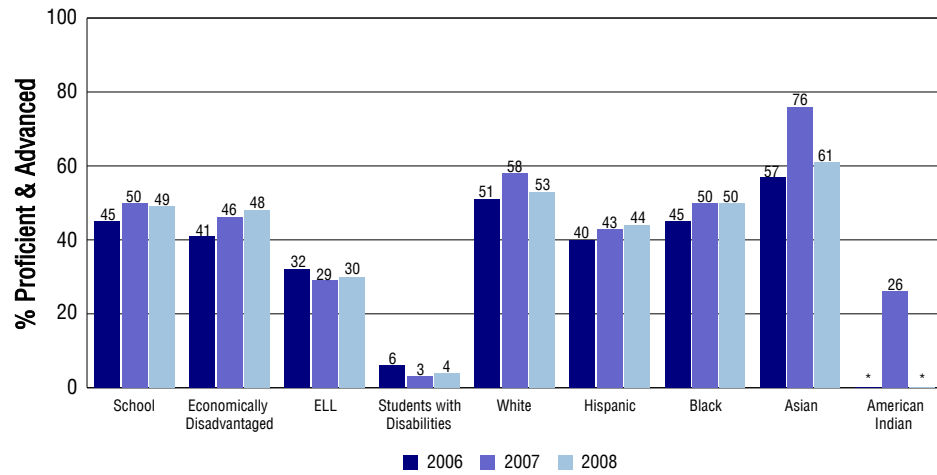
STUDENT PERFORMANCE

These graphs show the percent Proficient and Advanced trends over the past three years for Reading, Writing, and Math. Results are presented for the entire school for all reported grades as well as for different subgroups. Note: * indicates any group with less than 16 student results to be reported.

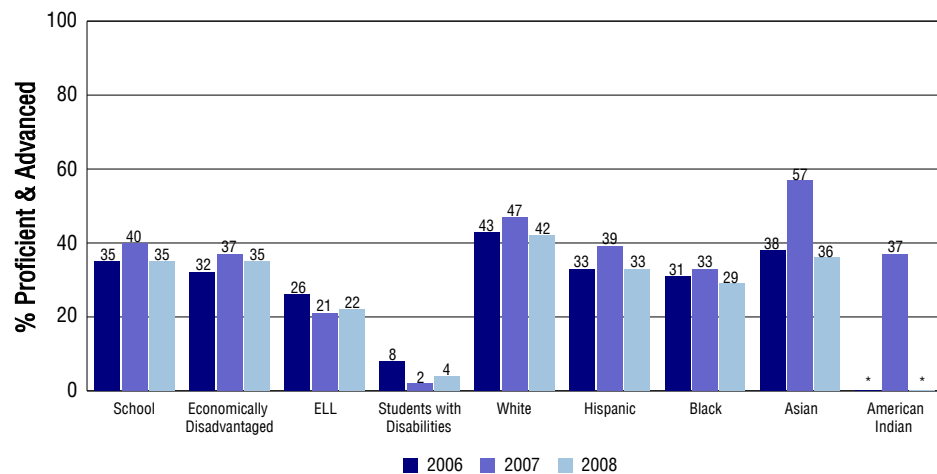
Reading



Writing



Math



SCHOOL INFORMATION

School Pride (as submitted by your district)

- Panorama Middle School utilizes a team concept to address the needs of all learners.
- Students participate in a variety of extracurricular opportunities including MESA, National Jr. Honor Society, choir, band, sports, student council, and others.
- Daily after school homework help sessions are available to students to provide assistance with homework or other academic needs.
- We are proud of our diverse student population.

School Goals (as submitted by your district)

1. Panorama Middle School is focused to improve the overall academic growth of students as measured by the School Accountability Report. 2. We strive to improve the individual academic growth of students as measured by Real Annual Yearly Progress. 3. Annually we seek to narrow the minority achievement gap, as measured by CSAP for different sub groups. 4. We consistently ensure that staff members understand their role in supporting the Harrison School District's goals and top academic priorities. 5. We will continue to strengthen curriculum alignment. 6. Our building has worked to raise the level of student teacher engagement and instructional rigor.

No Child Left Behind - Adequate Yearly Progress

Did your school make AYP in reading?	No	Math?	No
How many targets does your school have?	42	Met?	34

Based on this school's academic performance, your child may be eligible for one or more of the following; ask your school if your child qualifies for:

Extra academic instruction either before or after-school, or in the summer
Mentoring

For additional information regarding Adequate Yearly Progress please visit
<http://www.cde.state.co.us/FedPrograms/ayp/index.asp>

How Panorama Middle School Compares To Middle Schools Within A 75-Mile Radius

School	Program Type	Academic Performance	Academic Growth
James Irwin Charter Middle School	Charter	High	Typical
Carmel Middle School		Low	Low
Mountain Vista Community School	Magnet	Low	Typical
Emerson-Edison Junior Charter Academy(1)	Charter	Low	Typical
Sproul Junior High School(2)		Average	High
Fox Meadow Middle School		Average	Low
Irving Middle School(1)		Average	High
Cheyenne Mountain Charter Academy(3)	Charter	Excellent	High
21st Century Charter School(4)	Charter	Low	Typical
Globe Charter School(1)	Charter	Low	High

1 Located in Colorado Springs 11 School District.
2 Located in Widefield 3 School District.
3 Located in Cheyenne Mountain 12 School District.
4 Located in Charter School Institute School District.

ABOUT OUR STAFF

School Employment

Each year, your district reports to the Colorado Department of Education on the number of adults who work in your school, as well as the type of work they do. Last year, your school employed:

	Your School		District	
	Full Time	Part Time	Full Time	Part Time
Teachers	46	5	717	64
Paraprofessionals	9	2	202	55
Administrators	3	0	82	2
Other Professionals	1	0	73	33
School Support	8	7	215	139
School Counselors	3	0	32	5
School Librarians	1	0	9	0
Total Staff	85		1614	

Students per Teacher Ratio

	Student Enrollment	Students per Teacher
Grade 6	172	10
Grade 7	234	13.7
Grade 8	252	16.4

Professional Experience of Teachers

	Your School	District
Average years of teaching experience	7	7
Percent of teachers teaching in the subject in which they received their degree	54%	58%
Number of teachers with Masters or Doctoral degrees	20	292
Teachers with 3 years or more of teaching experience	33	517
Teachers with less than 3 years of teaching experience	18	264
Number of professional development days	10	10

Salaries

	Your School	District	State
Average Teacher Salary	\$41,880	\$40,390	\$47,494
Average Administrator Salary	\$79,346	\$76,965	\$80,444

Principal: Teresa Newbold

Number of years as Principal at this school: 6

Number of years as Principal at any school: 10