

# SAFETY AND SCHOOL ENVIRONMENT

## Non-CSAP Course Offerings

Your School Offers	does	does not
• art.....	<input checked="" type="checkbox"/>	<input type="checkbox"/>
• drama or theater.....	<input type="checkbox"/>	<input checked="" type="checkbox"/>
• music.....	<input checked="" type="checkbox"/>	<input type="checkbox"/>
• physical education.....	<input checked="" type="checkbox"/>	<input type="checkbox"/>
• opportunity for civic or community engagement.....	<input type="checkbox"/>	<input checked="" type="checkbox"/>
• internet safety program.....	<input type="checkbox"/>	<input checked="" type="checkbox"/>
• International Baccalaureate.....	<input type="checkbox"/>	<input checked="" type="checkbox"/>
• extracurricular activities.....	<input checked="" type="checkbox"/>	<input type="checkbox"/>
• athletics.....	<input checked="" type="checkbox"/>	<input type="checkbox"/>
• preschool program.....	<input checked="" type="checkbox"/>	<input type="checkbox"/>
• full-day kindergarten program.....	<input type="checkbox"/>	<input checked="" type="checkbox"/>
• before-and-after-school care program.....	<input checked="" type="checkbox"/>	<input type="checkbox"/>

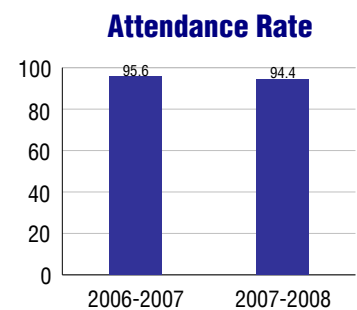
## Safety and Discipline

Safe schools are a top priority for parents, teachers, and communities. Your school safety and discipline record for the 2007-2008 school year is:

Type of Incident	Number of Incidents Reported	Percent of Total Incidents
Substance Abuse - Drugs		
Substance Abuse - Alcohol		
Substance Abuse - Tobacco		
Felony Assaults		
Fights	11	50.0%
Possession of Dangerous Weapons		
Other Violations Code of Conduct	11	50.0%

## Student Attendance and School Calendar

2007-2008	Your School
Enrollment	510
Average Daily Attendance	481
Student Dropouts	N/A



## Student Information Over Time

	2005-2006	2006-2007	2007-2008
Student Enrollment Stability	88.2%	86.9%	90.8%
Students Eligible for Free and Reduced Lunch	50.9 %	58.1 %	62.5 %

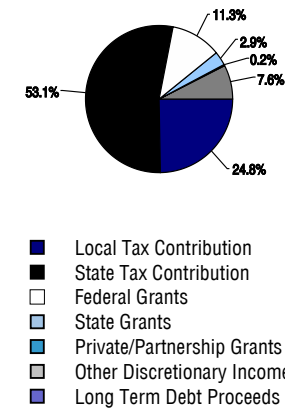
For more information and further details about this report, visit [www.state.co.us/schools](http://www.state.co.us/schools)  
 Colorado Department of Education, 201 East Colfax Ave. Denver, CO 80203  
**Sand Creek Elementary School**  
 0980/7611/E  
 550 Sand Creek Drive . Colorado Springs, CO 80916 . 719-579-3760  
 10/20/2008

# DISTRICT TAXPAYER'S REPORT

## Sources of School District Revenue 2007

Local Tax Contribution	\$25,649,648
State Tax Contribution	54,792,326
Federal Grants	11,684,958
State Grants	3,005,272
Private/Partnership Grants	233,124
Other Discretionary Income	7,867,774
<b>Total District Operating Revenue</b>	<b>\$103,233,102</b>
Long Term Debt Proceeds	0
<b>Total District Revenue</b>	<b>\$103,233,102</b>
<b>Total District Operating Revenue Per Pupil =</b>	<b>\$9,939</b>
<b>Total District Revenue Per Pupil (Including Long Term Debt) =</b>	<b>\$9,939</b>
<b>District Per Pupil Operating Revenue =</b>	<b>\$6,167</b>
<b>State Average Per Pupil Operating Revenue =</b>	<b>\$6,080</b>

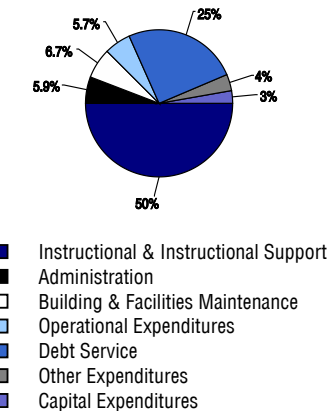
## District Source of Funds 2007



## District Use of Funds 2007

Instructional & Instructional Support	\$62,760,266
Administration	7,419,965
Building & Facilities Maintenance	8,364,383
Operational Expenditures	7,201,191
Debt Service	31,770,220
Other Expenditures	4,469,015
<b>Total District Operating Expenditures</b>	<b>\$121,985,040</b>
Capital Expenditures	3,507,411
<b>Total District Use of Funds</b>	<b>\$125,492,451</b>

## District Use of Funds 2007



## District Debt and Capital Construction & Equipment

Total Outstanding Bonded Debt	\$76,720,000
Average Annual Percentage Interest Rate on Debt	4.99%
Amount Raised from Most Recent Bond	\$60,000,000
Amount Spent on New Buildings During Last 2 Years	\$3,193,517

## Accreditation

Accreditation is Colorado's primary accountability system, incorporating achievement levels, academic growth, achievement gaps, post-secondary readiness, improvement planning, and compliance. The state accredits districts and districts accredit individual schools.

District Accreditation Status for the 2007-2008 school year: Notice with Support

## Voter Approved Funding Changes

Your community did  /did not  hold an election in November 2006

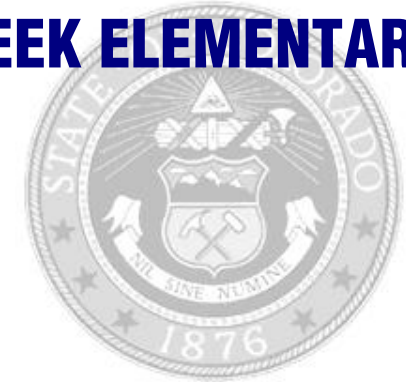
The following items have been approved by voters:

TABOR Override

Bond

Mill Levy Increase

# SAND CREEK ELEMENTARY SCHOOL



**HARRISON 2**

[www.hsd2.org](http://www.hsd2.org)

## School Accountability Report 2007-2008 School Year

### School Performance Summary

**Overall Academic Performance on State Assessments** **Average**

**Academic Growth of Students** **Low**

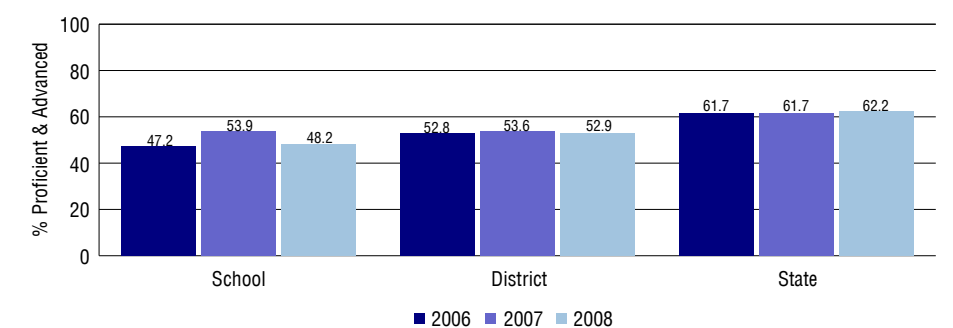
#### Overall Academic Performance on State Assessments

Each school in the State received a rating of "Excellent", "High", "Average", "Low", or "Unsatisfactory" for student academic performance based on 2007-2008 CSAP and COACT results. The rating is calculated using weighted percentages of each CSAP proficiency level for all content area and grade results for the school, as well as average COACT Reading, Writing, and Math Grade 11 results.

#### Academic Growth of Students

Each school in the State received a rating of "Low", "Typical", or "High" for student academic growth based on CSAP results. The calculation method is new for 2007-2008. The rating is calculated using student percentile scores matched over two years. More information about the Overall Academic Performance rating and Academic Growth of Students calculations can be found here: [http://www.cde.state.co.us/cdeassess/SAR\\_Info.html](http://www.cde.state.co.us/cdeassess/SAR_Info.html).

### Percent Proficient and Advanced for Elementary Grades for All Content Areas



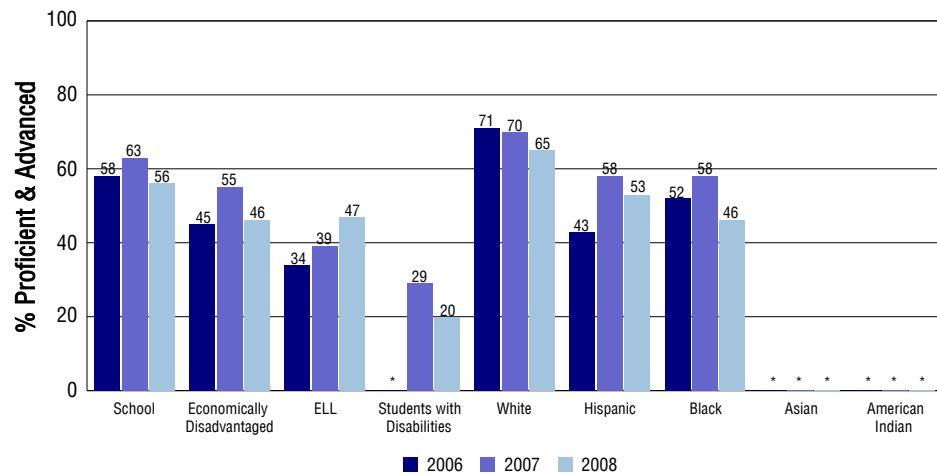
### Student Test Scores Used For Calculating Overall Academic Performance

81.9%	Test Scores Counted
9.1%	Test Scores not used due to Language
9.1%	Test Scores not used due to New Student

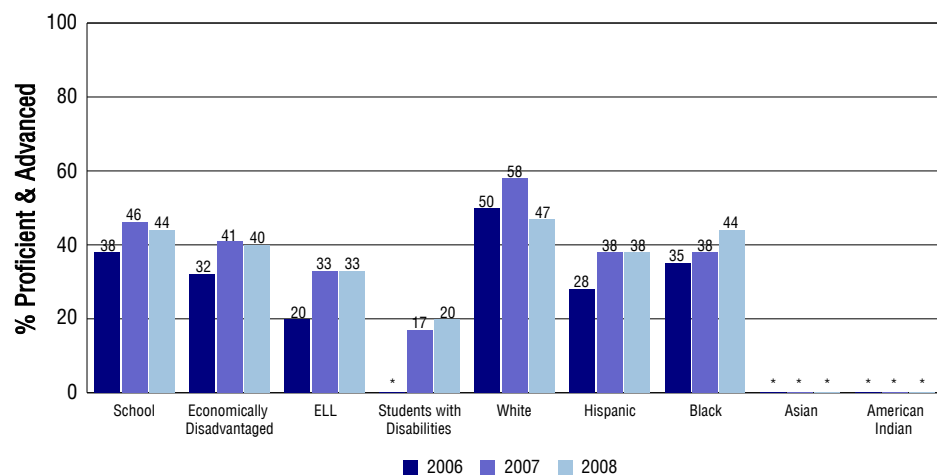
## STUDENT PERFORMANCE

These graphs show the percent Proficient and Advanced trends over the past three years for Reading, Writing, and Math. Results are presented for the entire school for all reported grades as well as for different subgroups. Note: \* indicates any group with less than 16 student results to be reported.

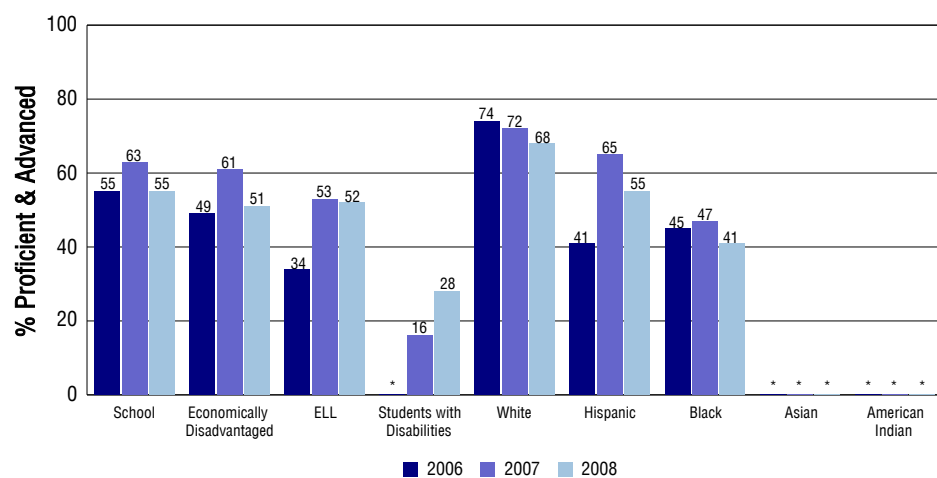
### Reading



### Writing



### Math



## SCHOOL INFORMATION

### School Pride (as submitted by your district)

- Students and family participate in four family literacy nights to promote the literacy connection between school and home.
- Our students participate in a variety of extracurricular activities such as sports, guitar club, tutoring, yearbook and student council.
- Our Parent Teacher Community Organization raises money to support field trips and provides fun family events such as spring carnival and the holiday shop.
- Various organizations have embraced our Sand Creek artists and displayed their work throughout the year, including a clay art display at Prairie Grass Park.

### School Goals (as submitted by your district)

Our staff worked together to establish a school mission and vision that are focused on the essential pillars of a professional learning community. In addition, for the 2007/08 school year, we focused our professional development on increasing the level of instructional rigor. We provided monthly staff development and our goal was that 90% of spot observations would show that teachers were posting objectives that allowed for students to perform at a variety of levels of rigor. In addition, we continue to be a data driven school, in which we collect data from a variety of sources and monitor student progress in order to facilitate students making a year's growth.

### No Child Left Behind - Adequate Yearly Progress

Did your school make AYP in reading?	Yes	Math?	Yes
How many targets does your school have?	38	Met?	38

**Based on this school's academic performance, your child may be eligible for one or more of the following; ask your school if your child qualifies for:**

Extra academic instruction either before or after-school, or in the summer  
Mentoring

For additional information regarding Adequate Yearly Progress please visit  
<http://www.cde.state.co.us/FedPrograms/ayp/index.asp>

### How Sand Creek Elementary School Compares To Elementary Schools Within A 75-Mile Radius

School	Program Type	Academic Performance	Academic Growth
Wildflower Elementary School		Average	Typical
Roosevelt Edison Charter School(1)	Charter	Average	High
James Irwin Charter Elementary School	Charter	High	Typical
Space Technology And Arts Academy (Star Academy)(1)	Charter	Low	No Rating
Monroe Elementary School(1)		Low	Low
Bricker Elementary School		Average	Typical
Centennial Elementary School		Low	Typical
Pikes Peak Elementary School		Low	Typical
Henry Elementary School(1)		Average	Typical
Mountain Vista Community School	Magnet	Average	High

1 Located in Colorado Springs 11 School District.

## ABOUT OUR STAFF

### School Employment

Each year, your district reports to the Colorado Department of Education on the number of adults who work in your school, as well as the type of work they do. Last year, your school employed:

	Your School		District	
	Full Time	Part Time	Full Time	Part Time
Teachers	32	2	717	64
Paraprofessionals	9	3	202	55
Administrators	2	0	82	2
Other Professionals	1	1	73	33
School Support	6	5	215	139
School Counselors	1	0	32	5
School Librarians	0	0	9	0
<b>Total Staff</b>	60		1614	

### Students per Teacher Ratio

	Student Enrollment	Students per Teacher
Grade 1	95	15.9
Grade 2	91	15.3
Grade 3	69	9.9
Grade 4	89	18.2
Grade 5	74	14.9

### Professional Experience of Teachers

	Your School	District
Average years of teaching experience	10	7
Percent of teachers teaching in the subject in which they received their degree	N/A	N/A
Number of teachers with Masters or Doctoral degrees	16	292
Teachers with 3 years or more of teaching experience	27	517
Teachers with less than 3 years of teaching experience	7	264
Number of professional development days	10	10

### Salaries

	Your School	District	State
Average Teacher Salary	\$43,730	\$40,390	\$47,494
Average Administrator Salary	\$69,302	\$76,965	\$80,444

**Principal:** Tacy Killingsworth

**Number of years as Principal at this school:** 1 (New Hire 2007/2008)

**Number of years as Principal at any school:** 1