

SAFETY AND SCHOOL ENVIRONMENT

Non-CSAP Course Offerings

Your School Offers	does	does not
• art.....	<input checked="" type="checkbox"/>	<input type="checkbox"/>
• drama or theater.....	<input checked="" type="checkbox"/>	<input type="checkbox"/>
• music.....	<input checked="" type="checkbox"/>	<input type="checkbox"/>
• physical education.....	<input checked="" type="checkbox"/>	<input type="checkbox"/>
• opportunity for civic or community engagement.....	<input checked="" type="checkbox"/>	<input type="checkbox"/>
• internet safety program.....	<input type="checkbox"/>	<input checked="" type="checkbox"/>
• International Baccalaureate.....	<input type="checkbox"/>	<input checked="" type="checkbox"/>
• extracurricular activities.....	<input checked="" type="checkbox"/>	<input type="checkbox"/>
• athletics.....	<input checked="" type="checkbox"/>	<input type="checkbox"/>
• career and technical education.....	<input checked="" type="checkbox"/>	<input type="checkbox"/>
• advanced placement.....	<input checked="" type="checkbox"/>	<input type="checkbox"/>
• honors.....	<input checked="" type="checkbox"/>	<input type="checkbox"/>

Safety and Discipline

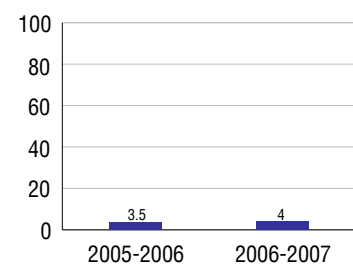
Safe schools are a top priority for parents, teachers, and communities. Your school safety and discipline record for the 2007-2008 school year is:

Type of Incident	Number of Incidents Reported	Percent of Total Incidents
Substance Abuse - Drugs	9	1.2%
Substance Abuse - Alcohol	4	0.5%
Substance Abuse - Tobacco	8	1.0%
Felony Assaults	1	0.1%
Fights	52	6.8%
Possession of Dangerous Weapons	9	1.2%
Other Violations Code of Conduct	686	89.2%

Student Attendance and School Calendar

2007-2008	Your School
Enrollment	2,084
Average Daily Attendance	1,965
Student Dropouts	4.0%

Dropout Rate



Student Information Over Time

	2005-2006	2006-2007	2007-2008
Student Enrollment Stability	92.5%	92.2%	90.7%
Students Eligible for Free and Reduced Lunch	10.4 %	11.5 %	14.3 %

For more information and further details about this report, visit www.state.co.us/schools
 Colorado Department of Education, 201 East Colfax Ave. Denver, CO 80203
Sand Creek High School
 1110/7613/H
 7005 North Carefree Circle . Colorado Springs, CO 80922 . 719-572-0924
 10/20/2008

DISTRICT TAXPAYER'S REPORT

Sources of School District Revenue	2007	District Source of Funds 2007
Local Tax Contribution	\$25,826,430	
State Tax Contribution	55,487,866	
Federal Grants	3,489,534	
State Grants	3,366,543	
Private/Partnership Grants	211,377	
Other Discretionary Income	9,296,771	
Total District Operating Revenue	\$97,678,521	
Long Term Debt Proceeds	58,558,145	
Total District Revenue	\$156,236,666	
Total District Operating Revenue Per Pupil =	\$8,435	
Total District Revenue Per Pupil (Including Long Term Debt) =	\$13,491	
District Per Pupil Operating Revenue =	\$5,702	
State Average Per Pupil Operating Revenue =	\$6,080	
District Use of Funds	2007	
Instructional & Instructional Support	\$52,917,238	
Administration	5,233,392	
Building & Facilities Maintenance	6,757,113	
Operational Expenditures	7,255,802	
Debt Service	27,424,795	
Other Expenditures	2,440,118	
Total District Operating Expenditures	\$102,028,458	
Capital Expenditures	42,107,141	
Total District Use of Funds	\$144,135,599	

District Debt and Capital Construction & Equipment

Total Outstanding Bonded Debt	\$57,095,000
Average Annual Percentage Interest Rate on Debt	4.6%
Amount Raised from Most Recent Bond	\$28,000,000
Amount Spent on New Buildings During Last 2 Years	\$51,700,662

Accreditation

Accreditation is Colorado's primary accountability system, incorporating achievement levels, academic growth, achievement gaps, post-secondary readiness, improvement planning, and compliance. The state accredits districts and districts accredit individual schools.

District Accreditation Status for the 2007-2008 school year:

Voter Approved Funding Changes

Your community did /did not hold an election in November 2006

The following items have been approved by voters:

TABOR Override Bond Mill Levy Increase

SAND CREEK HIGH SCHOOL



FALCON 49

<http://www.d49.org/schools/schs/>
School Accountability Report
2007-2008 School Year

School Performance Summary

Overall Academic Performance on State Assessments **Average**

Academic Growth of Students **Typical**

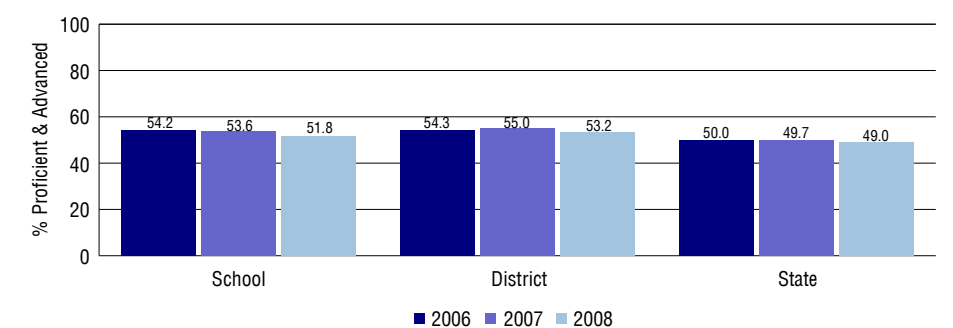
Overall Academic Performance on State Assessments

Each school in the State received a rating of "Excellent", "High", "Average", "Low", or "Unsatisfactory" for student academic performance based on 2007-2008 CSAP and COACT results. The rating is calculated using weighted percentages of each CSAP proficiency level for all content area and grade results for the school, as well as average COACT Reading, Writing, and Math Grade 11 results.

Academic Growth of Students

Each school in the State received a rating of "Low", "Typical", or "High" for student academic growth based on CSAP results. The calculation method is new for 2007-2008. The rating is calculated using student percentile scores matched over two years. More information about the Overall Academic Performance rating and Academic Growth of Students calculations can be found here: http://www.cde.state.co.us/cdeassess/SAR_Info.html.

Percent Proficient and Advanced for High Grades for All Content Areas



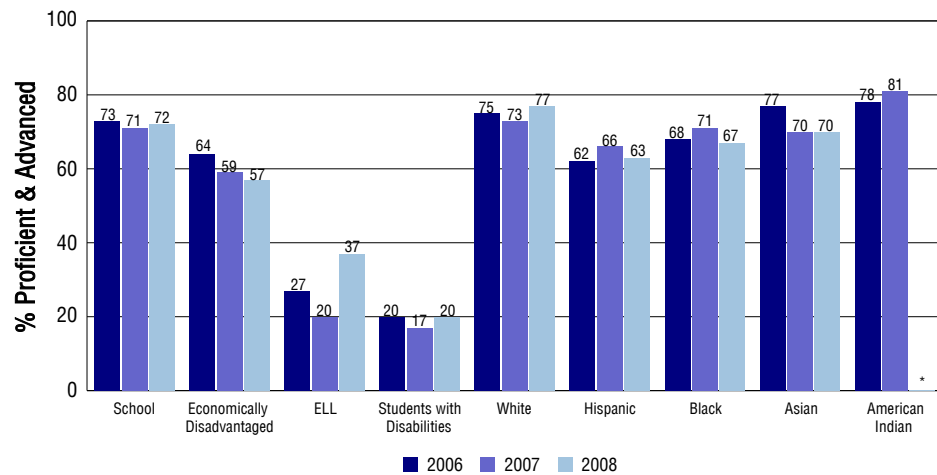
Student Test Scores Used For Calculating Overall Academic Performance

56.6%	Test Scores Counted
0.1%	Test Scores not used due to Language
43.4%	Test Scores not used due to New Student

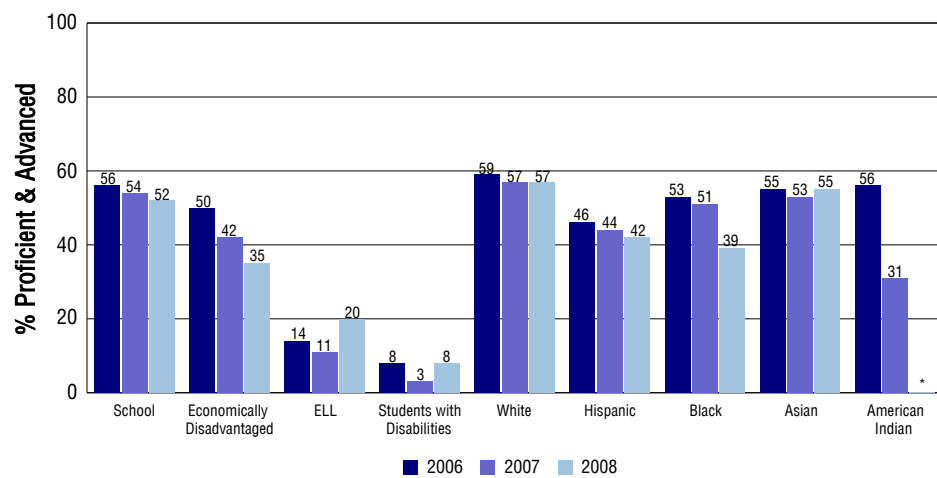
STUDENT PERFORMANCE

These graphs show the percent Proficient and Advanced trends over the past three years for Reading, Writing, and Math. Results are presented for the entire school for all reported grades as well as for different subgroups. Note: * indicates any group with less than 16 student results to be reported.

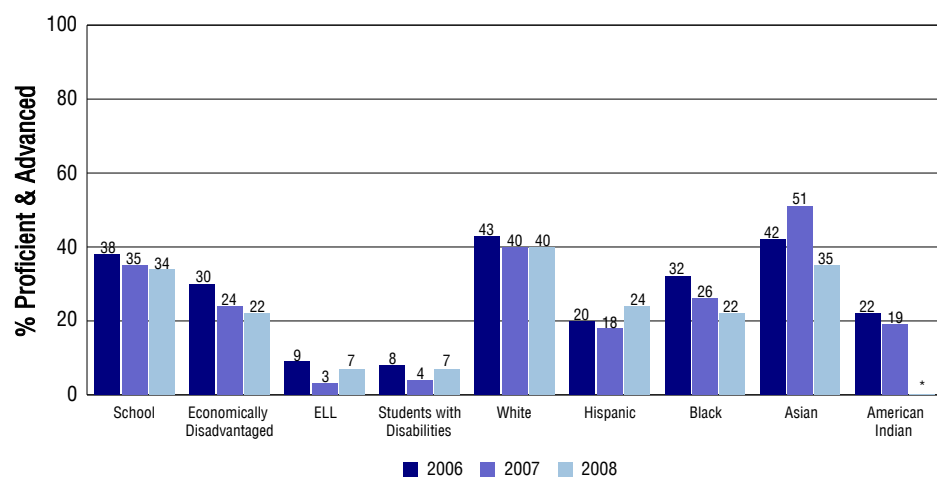
Reading



Writing



Math



SCHOOL INFORMATION

School Pride (as submitted by your district)

- Introduction of the International Baccalaureate Program
- Extra Help given to students by the Success Center
- Transitional support given to new 9th grade students by Freshman Academy.
- Outstanding Arts Programs with award winning competitions

School Goals (as submitted by your district)

To increase CSAP scores by 3%. To reduce the percentage of F's in 9th and 10th grades by 5%

No Child Left Behind - Adequate Yearly Progress

Did your school make AYP in reading?	Yes	Math?	No
Did your school make the graduation rate targets?	Yes		
How many targets does your school have?	36	Met?	31

Based on this school's academic performance, your child may be eligible for one or more of the following; ask your school if your child qualifies for:

Extra academic instruction either before or after-school, or in the summer
Mentoring

For additional information regarding Adequate Yearly Progress please visit
<http://www.cde.state.co.us/FedPrograms/ayp/index.asp>

How Sand Creek High School Compares To High Schools Within A 75-Mile Radius

School	Program Type	Academic Performance	Academic Growth
Doherty High School(1)		High	Typical
Mitchell High School(1)		Average	Typical
Liberty High School(2)		High	Typical
Wasson High School(1)		Average	Typical
Rampart High School(2)		Excellent	Typical
Shivers Academy Charter School(3)	Charter	No Rating	No Rating
James Irwin Charter High School(3)	Charter	Excellent	High
Pine Creek High School(2)		Excellent	Typical
Sierra High School(3)		Low	Typical
Aspen Valley High School(2)	Alternative	Average	No Rating

1 Located in Colorado Springs 11 School District.

2 Located in Academy 20 School District.

3 Located in Harrison 2 School District.

ABOUT OUR STAFF

School Employment

Each year, your district reports to the Colorado Department of Education on the number of adults who work in your school, as well as the type of work they do. Last year, your school employed:

	Your School		District	
	Full Time	Part Time	Full Time	Part Time
Teachers	110	2	705	32
Paraprofessionals	17	3	177	62
Administrators	5	0	58	1
Other Professionals	1	2	61	10
School Support	29	5	220	106
School Counselors	5	0	21	0
School Librarians	1	0	15	0
Total Staff	180		1464	

Students per Teacher Ratio

	Student Enrollment	Students per Teacher
Grade 9	538	19.3
Grade 10	534	19.2
Grade 11	523	18.8
Grade 12	489	17.5

Professional Experience of Teachers

	Your School	District
Average years of teaching experience	10	8
Percent of teachers teaching in the subject in which they received their degree	68%	56%
Number of teachers with Masters or Doctoral degrees	51	248
Teachers with 3 years or more of teaching experience	104	658
Teachers with less than 3 years of teaching experience	8	79
Number of professional development days	5	6

Salaries

	Your School	District	State
Average Teacher Salary	\$44,590	\$40,571	\$47,494
Average Administrator Salary	\$80,930	\$79,901	\$80,444

Principal: Michael Collins

Number of years as Principal at this school: 3

Number of years as Principal at any school: 3