

# SAFETY AND SCHOOL ENVIRONMENT

## Non-CSAP Course Offerings

Your School Offers	does	does not
• art.....	<input checked="" type="checkbox"/>	<input type="checkbox"/>
• drama or theater.....	<input type="checkbox"/>	<input checked="" type="checkbox"/>
• music.....	<input checked="" type="checkbox"/>	<input type="checkbox"/>
• physical education.....	<input checked="" type="checkbox"/>	<input type="checkbox"/>
• opportunity for civic or community engagement.....	<input checked="" type="checkbox"/>	<input type="checkbox"/>
• internet safety program.....	<input checked="" type="checkbox"/>	<input type="checkbox"/>
• International Baccalaureate.....	<input type="checkbox"/>	<input checked="" type="checkbox"/>
• extracurricular activities.....	<input checked="" type="checkbox"/>	<input type="checkbox"/>
• athletics.....	<input checked="" type="checkbox"/>	<input type="checkbox"/>
• preschool program.....	<input checked="" type="checkbox"/>	<input type="checkbox"/>
• full-day kindergarten program.....	<input checked="" type="checkbox"/>	<input type="checkbox"/>
• before-and-after-school care program.....	<input checked="" type="checkbox"/>	<input type="checkbox"/>

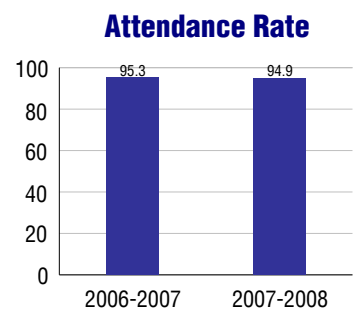
## Safety and Discipline

Safe schools are a top priority for parents, teachers, and communities. Your school safety and discipline record for the 2007-2008 school year is:

Type of Incident	Number of Incidents Reported	Percent of Total Incidents
Substance Abuse - Drugs	1	1.3%
Substance Abuse - Alcohol		
Substance Abuse - Tobacco		
Felony Assaults		
Fights	43	55.8%
Possession of Dangerous Weapons	3	3.9%
Other Violations Code of Conduct	30	39.0%

## Student Attendance and School Calendar

2007-2008	Your School
Enrollment	326
Average Daily Attendance	309
Student Dropouts	N/A



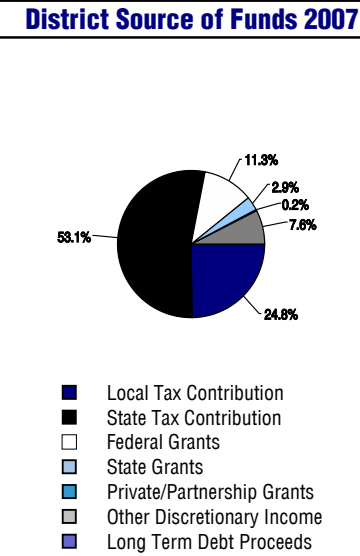
## Student Information Over Time

	2005-2006	2006-2007	2007-2008
Student Enrollment Stability	83.7%	76.4%	81.6%
Students Eligible for Free and Reduced Lunch	79.8 %	72.0 %	77.6 %

For more information and further details about this report, visit [www.state.co.us/schools](http://www.state.co.us/schools)  
 Colorado Department of Education, 201 East Colfax Ave. Denver, CO 80203  
**Stratton Meadows Elementary School**  
 0980/8350/E  
 610 Brookshire Avenue . Colorado Springs, CO 80906 . 719-579-2190  
 10/20/2008

# DISTRICT TAXPAYER'S REPORT

Sources of School District Revenue	2007
Local Tax Contribution	\$25,649,648
State Tax Contribution	54,792,326
Federal Grants	11,684,958
State Grants	3,005,272
Private/Partnership Grants	233,124
Other Discretionary Income	7,867,774
<b>Total District Operating Revenue</b>	<b>\$103,233,102</b>
Long Term Debt Proceeds	0
<b>Total District Revenue</b>	<b>\$103,233,102</b>
<b>Total District Operating Revenue Per Pupil =</b>	<b>\$9,939</b>
<b>Total District Revenue Per Pupil (Including Long Term Debt) =</b>	<b>\$9,939</b>
<b>District Per Pupil Operating Revenue =</b>	<b>\$6,167</b>
<b>State Average Per Pupil Operating Revenue =</b>	<b>\$6,080</b>
District Use of Funds	2007
Instructional & Instructional Support	\$62,760,266
Administration	7,419,965
Building & Facilities Maintenance	8,364,383
Operational Expenditures	7,201,191
Debt Service	31,770,220
Other Expenditures	4,469,015
<b>Total District Operating Expenditures</b>	<b>\$121,985,040</b>
Capital Expenditures	3,507,411
<b>Total District Use of Funds</b>	<b>\$125,492,451</b>



## District Debt and Capital Construction & Equipment

Total Outstanding Bonded Debt	\$76,720,000
Average Annual Percentage Interest Rate on Debt	4.99%
Amount Raised from Most Recent Bond	\$60,000,000
Amount Spent on New Buildings During Last 2 Years	\$3,193,517

## Accreditation

Accreditation is Colorado's primary accountability system, incorporating achievement levels, academic growth, achievement gaps, post-secondary readiness, improvement planning, and compliance. The state accredits districts and districts accredit individual schools.

District Accreditation Status for the 2007-2008 school year: Notice with Support

## Voter Approved Funding Changes

Your community did  /did not  hold an election in November 2006

The following items have been approved by voters:

TABOR Override

Bond

Mill Levy Increase

# STRATTON MEADOWS ELEMENTARY SCHOOL



**HARRISON 2**

[www.hsd2.org](http://www.hsd2.org)

## School Accountability Report 2007-2008 School Year

### School Performance Summary

**Overall Academic Performance on State Assessments** **Average**

**Academic Growth of Students** **Typical**

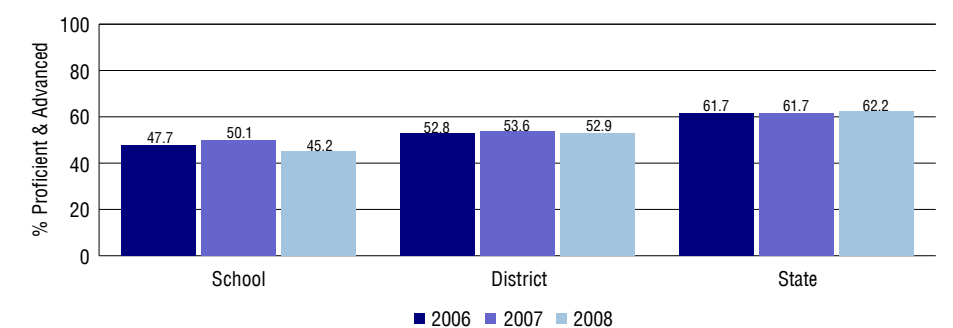
### Overall Academic Performance on State Assessments

Each school in the State received a rating of "Excellent", "High", "Average", "Low", or "Unsatisfactory" for student academic performance based on 2007-2008 CSAP and COACT results. The rating is calculated using weighted percentages of each CSAP proficiency level for all content area and grade results for the school, as well as average COACT Reading, Writing, and Math Grade 11 results.

### Academic Growth of Students

Each school in the State received a rating of "Low", "Typical", or "High" for student academic growth based on CSAP results. The calculation method is new for 2007-2008. The rating is calculated using student percentile scores matched over two years. More information about the Overall Academic Performance rating and Academic Growth of Students calculations can be found here: [http://www.cde.state.co.us/cdeassess/SAR\\_Info.html](http://www.cde.state.co.us/cdeassess/SAR_Info.html).

### Percent Proficient and Advanced for Elementary Grades for All Content Areas



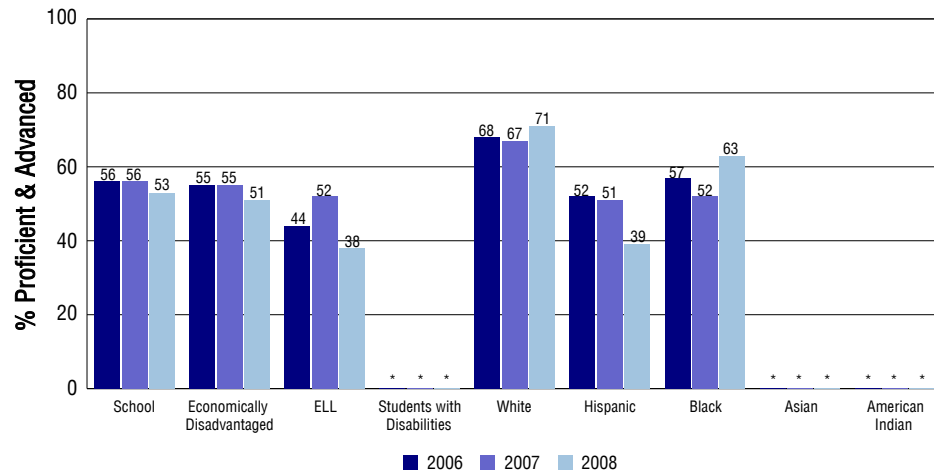
### Student Test Scores Used For Calculating Overall Academic Performance

81.2%	Test Scores Counted
12.2%	Test Scores not used due to Language
6.6%	Test Scores not used due to New Student

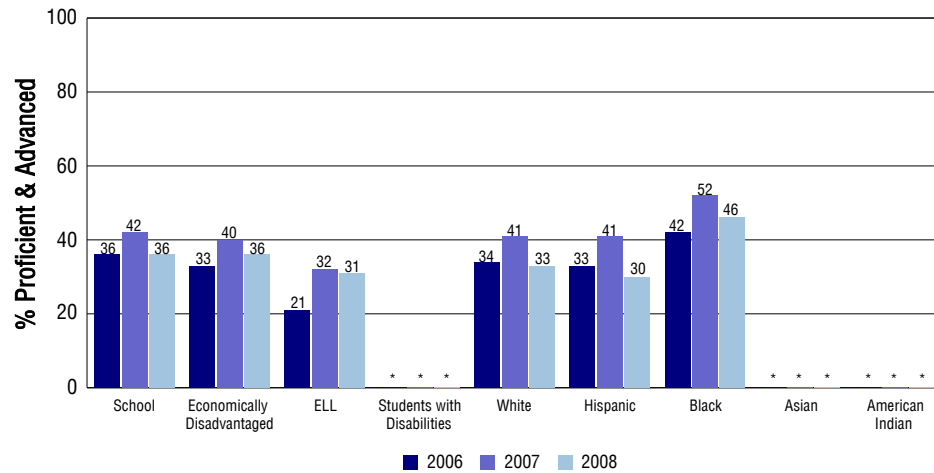
## STUDENT PERFORMANCE

These graphs show the percent Proficient and Advanced trends over the past three years for Reading, Writing, and Math. Results are presented for the entire school for all reported grades as well as for different subgroups. Note: \* indicates any group with less than 16 student results to be reported.

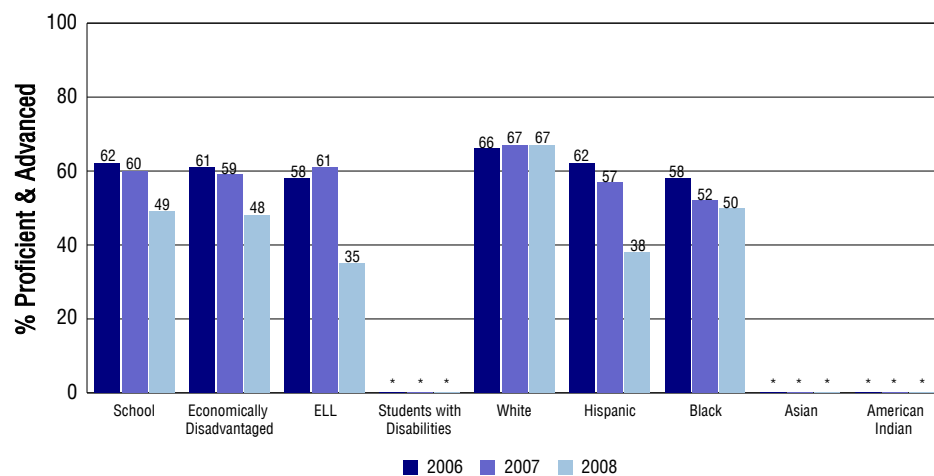
### Reading



### Writing



### Math



## SCHOOL INFORMATION

### School Pride (as submitted by your district)

- Providing a safe, positive and effective learning environment is a priority for all Stratton Meadows staff.
- Extracurricular opportunities include Choir, MESA, Big Brothers, Big Sisters, After School Success Academies, Student Council, and a 5th Grade Mentor Program.
- A strong parent partnership is evident through support of family nights, reading buddies, carnivals, fundraisers, honor assemblies and parent conferences.
- Our success at serving a diverse population with highly qualified and dedicated staff enables us to achieve adequate yearly progress.

### School Goals (as submitted by your district)

Our teachers make the difference! We will achieve adequate yearly progress in all subcategories, especially our ELL and Special Education populations to achieve academic success for ALL! We will continue to focus on student/teacher engagement through cooperative learning strategies such as Kagan structures. We will continue to be a data driven school by continuing to analyze curriculum based measures, DIBELS, CSAP, STAR, Successmaker Math and Reading and BEAR to track and guide our progress in using research based practices through ongoing professional development.

### No Child Left Behind - Adequate Yearly Progress

Did your school make AYP in reading?	No	Math?	Yes
How many targets does your school have?	20	Met?	17

Based on this school's academic performance, your child may be eligible for one or more of the following; ask your school if your child qualifies for:

Extra academic instruction either before or after-school, or in the summer Mentoring

For additional information regarding Adequate Yearly Progress please visit <http://www.cde.state.co.us/FedPrograms/ayp/index.asp>

### How Stratton Meadows Elementary School Compares To Elementary Schools Within A 75-Mile Radius

School	Program Type	Academic Performance	Academic Growth
Chamberlin Elementary School		Average	Typical
Cheyenne Mountain Charter Academy(1)	Charter	Excellent	Typical
Ivywild Elementary School(2)		Average	Typical
Hunt Elementary School(2)		Average	Typical
21st Century Charter School(3)	Charter	Low	Low
Oak Creek Elementary School		Average	Typical
Broadmoor Elementary School(1)		Excellent	High
Adams Elementary School(2)		Average	Typical
Skyway Park Elementary School(1)		High	Typical
Canon Elementary School(1)		Excellent	Typical

1 Located in Cheyenne Mountain 12 School District.

2 Located in Colorado Springs 11 School District.

3 Located in Charter School Institute School District.

## ABOUT OUR STAFF

### School Employment

Each year, your district reports to the Colorado Department of Education on the number of adults who work in your school, as well as the type of work they do. Last year, your school employed:

	Your School		District	
	Full Time	Part Time	Full Time	Part Time
Teachers	17	6	717	64
Paraprofessionals	7	4	202	55
Administrators	2	0	82	2
Other Professionals	1	1	73	33
School Support	3	7	215	139
School Counselors	1	0	32	5
School Librarians	0	0	9	0
<b>Total Staff</b>	47		1614	

### Students per Teacher Ratio

	Student Enrollment	Students per Teacher
Grade 1	47	21.4
Grade 2	58	15
Grade 3	44	13.8
Grade 4	37	12.6
Grade 5	45	15.3

### Professional Experience of Teachers

	Your School	District
Average years of teaching experience	11	7
Percent of teachers teaching in the subject in which they received their degree	N/A	N/A
Number of teachers with Masters or Doctoral degrees	8	292
Teachers with 3 years or more of teaching experience	22	517
Teachers with less than 3 years of teaching experience	1	264
Number of professional development days	10	10

### Salaries

	Your School	District	State
Average Teacher Salary	\$46,377	\$40,390	\$47,494
Average Administrator Salary	\$80,006	\$76,965	\$80,444

Principal: Jeanette Garcia

Number of years as Principal at this school: 1 (New Hire 2007/2008)

Number of years as Principal at any school: 12