

# SAFETY AND SCHOOL ENVIRONMENT

## Non-CSAP Course Offerings

Your School Offers	does	does not
• art.....	<input type="checkbox"/>	<input checked="" type="checkbox"/>
• drama or theater.....	<input type="checkbox"/>	<input checked="" type="checkbox"/>
• music.....	<input checked="" type="checkbox"/>	<input type="checkbox"/>
• physical education.....	<input checked="" type="checkbox"/>	<input type="checkbox"/>
• opportunity for civic or community engagement.....	<input checked="" type="checkbox"/>	<input type="checkbox"/>
• internet safety program.....	<input type="checkbox"/>	<input checked="" type="checkbox"/>
• International Baccalaureate.....	<input type="checkbox"/>	<input checked="" type="checkbox"/>
• extracurricular activities.....	<input checked="" type="checkbox"/>	<input type="checkbox"/>
• athletics.....	<input type="checkbox"/>	<input checked="" type="checkbox"/>
• preschool program.....	<input type="checkbox"/>	<input checked="" type="checkbox"/>
• full-day kindergarten program.....	<input checked="" type="checkbox"/>	<input type="checkbox"/>
• before-and-after-school care program.....	<input checked="" type="checkbox"/>	<input type="checkbox"/>

## Safety and Discipline

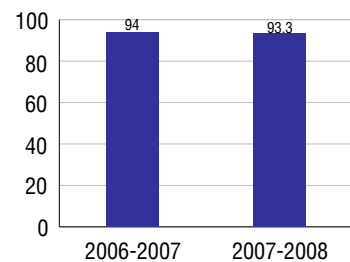
Safe schools are a top priority for parents, teachers, and communities. Your school safety and discipline record for the 2007-2008 school year is:

Type of Incident	Number of Incidents Reported	Percent of Total Incidents
Substance Abuse - Drugs		
Substance Abuse - Alcohol		
Substance Abuse - Tobacco		
Felony Assaults		
Fights		
Possession of Dangerous Weapons		
Other Violations Code of Conduct	43	100.0%

## Student Attendance and School Calendar

2007-2008	Your School
Enrollment	244
Average Daily Attendance	228
Student Dropouts	N/A

## Attendance Rate



## Student Information Over Time

	2005-2006	2006-2007	2007-2008
Student Enrollment Stability	91.6%	96.0%	97.1%
Students Eligible for Free and Reduced Lunch	46.5 %	46.7 %	51.6 %

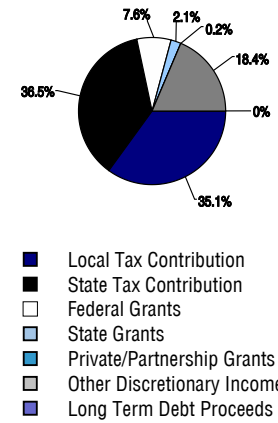
For more information and further details about this report, visit [www.state.co.us/schools](http://www.state.co.us/schools)  
 Colorado Department of Education, 201 East Colfax Ave. Denver, CO 80203  
**Taylor Elementary School**  
 1010/8466/E  
 900 East Buena Ventura Street . Colorado Springs, CO 80907 . 719-328-3500  
 10/20/2008

# DISTRICT TAXPAYER'S REPORT

## Sources of School District Revenue 2007

Local Tax Contribution	\$113,583,627
State Tax Contribution	118,186,780
Federal Grants	24,713,529
State Grants	6,766,930
Private/Partnership Grants	620,835
Other Discretionary Income	59,748,276
<b>Total District Operating Revenue</b>	<b>\$323,619,977</b>
Long Term Debt Proceeds	226,133
<b>Total District Revenue</b>	<b>\$323,846,110</b>
<b>Total District Operating Revenue Per Pupil =</b>	<b>\$11,281</b>
<b>Total District Revenue Per Pupil (Including Long Term Debt) =</b>	<b>\$11,289</b>
<b>District Per Pupil Operating Revenue =</b>	<b>\$5,934</b>
<b>State Average Per Pupil Operating Revenue =</b>	<b>\$6,080</b>

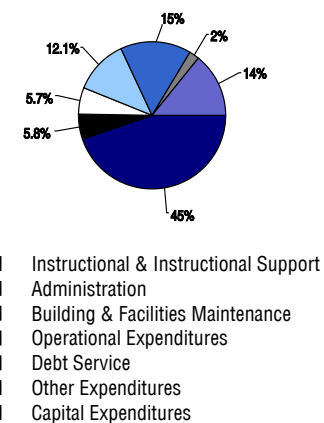
## District Source of Funds 2007



## District Use of Funds 2007

Instructional & Instructional Support	\$182,554,407
Administration	23,654,864
Building & Facilities Maintenance	23,340,275
Operational Expenditures	49,414,159
Debt Service	63,437,095
Other Expenditures	8,971,654
<b>Total District Operating Expenditures</b>	<b>\$351,372,454</b>
Capital Expenditures	58,096,235
<b>Total District Use of Funds</b>	<b>\$409,468,689</b>

## District Use of Funds 2007



## District Debt and Capital Construction & Equipment

Total Outstanding Bonded Debt	\$205,519,973
Average Annual Percentage Interest Rate on Debt	5.28%
Amount Raised from Most Recent Bond	\$131,700,000
Amount Spent on New Buildings During Last 2 Years	\$31,201,211

## Accreditation

Accreditation is Colorado's primary accountability system, incorporating achievement levels, academic growth, achievement gaps, post-secondary readiness, improvement planning, and compliance. The state accredits districts and districts accredit individual schools.

District Accreditation Status for the 2007-2008 school year:

## Voter Approved Funding Changes

Your community did  /did not  hold an election in November 2006

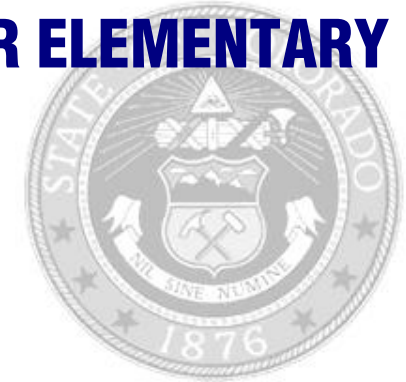
The following items have been approved by voters:

TABOR Override

Bond

Mill Levy Increase

# TAYLOR ELEMENTARY SCHOOL



COLORADO SPRINGS 11

<http://www.cssd11.k12.co.us/>  
**School Accountability Report**  
**2007-2008 School Year**

## School Performance Summary

**Overall Academic Performance on State Assessments** **Average**

**Academic Growth of Students** **Low**

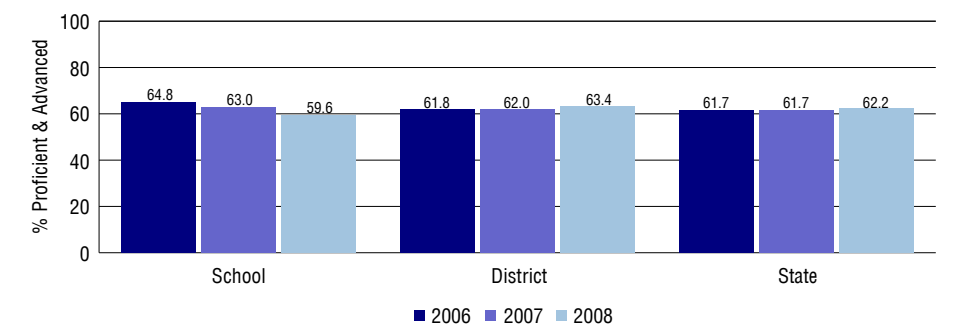
## Overall Academic Performance on State Assessments

Each school in the State received a rating of "Excellent", "High", "Average", "Low", or "Unsatisfactory" for student academic performance based on 2007-2008 CSAP and COACT results. The rating is calculated using weighted percentages of each CSAP proficiency level for all content area and grade results for the school, as well as average COACT Reading, Writing, and Math Grade 11 results.

## Academic Growth of Students

Each school in the State received a rating of "Low", "Typical", or "High" for student academic growth based on CSAP results. The calculation method is new for 2007-2008. The rating is calculated using student percentile scores matched over two years. More information about the Overall Academic Performance rating and Academic Growth of Students calculations can be found here: [http://www.cde.state.co.us/cdeassess/SAR\\_Info.html](http://www.cde.state.co.us/cdeassess/SAR_Info.html).

## Percent Proficient and Advanced for Elementary Grades for All Content Areas



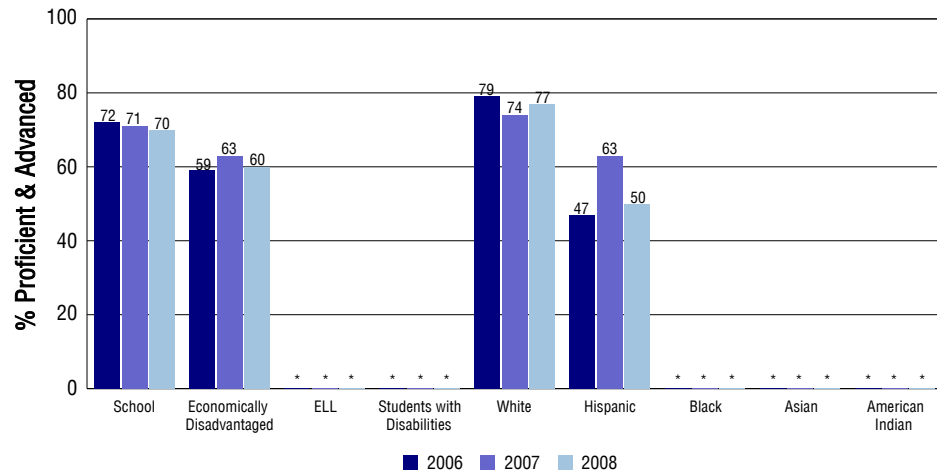
## Student Test Scores Used For Calculating Overall Academic Performance

93.7%	Test Scores Counted
0.7%	Test Scores not used due to Language
5.6%	Test Scores not used due to New Student

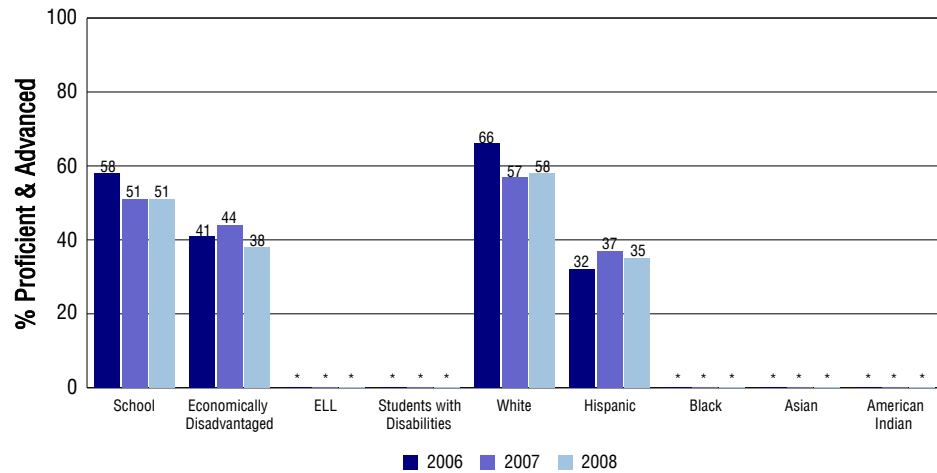
## STUDENT PERFORMANCE

These graphs show the percent Proficient and Advanced trends over the past three years for Reading, Writing, and Math. Results are presented for the entire school for all reported grades as well as for different subgroups. Note: \* indicates any group with less than 16 student results to be reported.

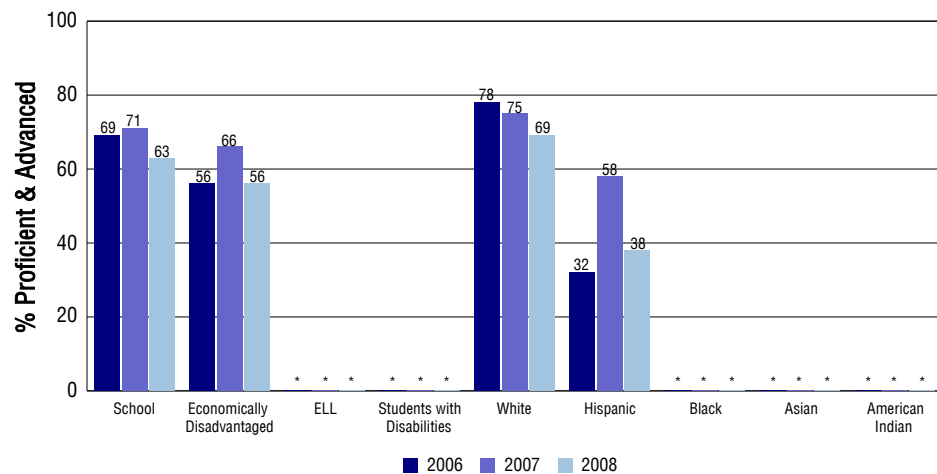
### Reading



### Writing



### Math



## SCHOOL INFORMATION

### School Pride (as submitted by your district)

- Highly qualified staff, most of whom have won the CSSD11 Crystal Apple Award for Teaching Excellence
- THINKING MAPS SCHOOL FOR TEACHING CRITICAL THINKING SKILLS
- VERY INVOLVED PTA
- A staff and community dedicated to assisting every child that enters our school to reach his potential both academically and socially.

### School Goals (as submitted by your district)

To provide interventions and opportunities for extension as needed for every child to meet his or her academic potential at each grade level.

### No Child Left Behind - Adequate Yearly Progress

Did your school make AYP in reading?	Yes	Math?	Yes
How many targets does your school have?	18	Met?	18

Based on this school's academic performance, your child may be eligible for one or more of the following; ask your school if your child qualifies for:

Extra academic instruction either before or after-school, or in the summer  
Mentoring

For additional information regarding Adequate Yearly Progress please visit <http://www.cde.state.co.us/FedPrograms/ayp/index.asp>

### How Taylor Elementary School Compares To Elementary Schools Within A 75-Mile Radius

School	Program Type	Academic Performance	Academic Growth
Chinook Trail Elementary School(1)		High	Typical
Steele Elementary School		Excellent	High
Stratton Elementary School		Excellent	Typical
Columbia Elementary School		Average	Typical
Globe Charter School	Charter	Average	Typical
Queen Palmer Elementary School		Average	Typical
Lincoln Elementary School		Average	Typical
Bristol Elementary School		Average	Typical
Jefferson Elementary School		Low	Typical
Edison Elementary School		Low	Typical

1 Located in Academy 20 School District.

## ABOUT OUR STAFF

### School Employment

Each year, your district reports to the Colorado Department of Education on the number of adults who work in your school, as well as the type of work they do. Last year, your school employed:

	Your School		District	
	Full Time	Part Time	Full Time	Part Time
Teachers	15	5	1790	87
Paraprofessionals	4	1	580	35
Administrators	1	0	157	9
Other Professionals	1	3	260	83
School Support	3	2	678	314
School Counselors	0	0	41	4
School Librarians	1	0	58	4
<b>Total Staff</b>	36		4082	

### Students per Teacher Ratio

	Student Enrollment	Students per Teacher
Grade 1	35	9.6
Grade 2	42	16
Grade 3	43	14.5
Grade 4	37	17.9
Grade 5	45	14.7

### Professional Experience of Teachers

	Your School	District
Average years of teaching experience	9	9
Percent of teachers teaching in the subject in which they received their degree	N/A	N/A
Number of teachers with Masters or Doctoral degrees	8	1100
Teachers with 3 years or more of teaching experience	12	1314
Teachers with less than 3 years of teaching experience	8	563
Number of professional development days	9	8

### Salaries

	Your School	District	State
Average Teacher Salary	\$48,139	\$46,064	\$47,494
Average Administrator Salary	\$80,615	\$79,793	\$80,444

Principal: Mary Sullivan

Number of years as Principal at this school: 4

Number of years as Principal at any school: 7