

SAFETY AND SCHOOL ENVIRONMENT

Non-CSAP Course Offerings

Your School Offers	does	does not
• art.....	<input checked="" type="checkbox"/>	<input type="checkbox"/>
• drama or theater.....	<input checked="" type="checkbox"/>	<input type="checkbox"/>
• music.....	<input checked="" type="checkbox"/>	<input type="checkbox"/>
• physical education.....	<input checked="" type="checkbox"/>	<input type="checkbox"/>
• opportunity for civic or community engagement.....	<input checked="" type="checkbox"/>	<input type="checkbox"/>
• internet safety program.....	<input checked="" type="checkbox"/>	<input type="checkbox"/>
• International Baccalaureate.....	<input type="checkbox"/>	<input checked="" type="checkbox"/>
• extracurricular activities.....	<input checked="" type="checkbox"/>	<input type="checkbox"/>
• athletics.....	<input checked="" type="checkbox"/>	<input type="checkbox"/>
• career and technical education.....	<input checked="" type="checkbox"/>	<input type="checkbox"/>
• honors.....	<input type="checkbox"/>	<input checked="" type="checkbox"/>

Safety and Discipline

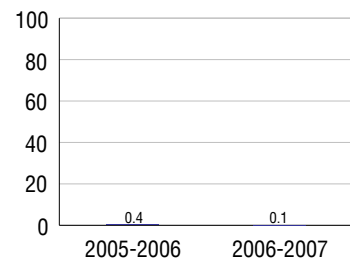
Safe schools are a top priority for parents, teachers, and communities. Your school safety and discipline record for the 2007-2008 school year is:

Type of Incident	Number of Incidents Reported	Percent of Total Incidents
Substance Abuse - Drugs	2	0.8%
Substance Abuse - Alcohol	1	0.4%
Substance Abuse - Tobacco	2	0.8%
Felony Assaults		
Fights		
Possession of Dangerous Weapons	2	0.8%
Other Violations Code of Conduct	258	97.4%

Student Attendance and School Calendar

2007-2008	Your School
Enrollment	987
Average Daily Attendance	936
Student Dropouts	0.1%

Dropout Rate



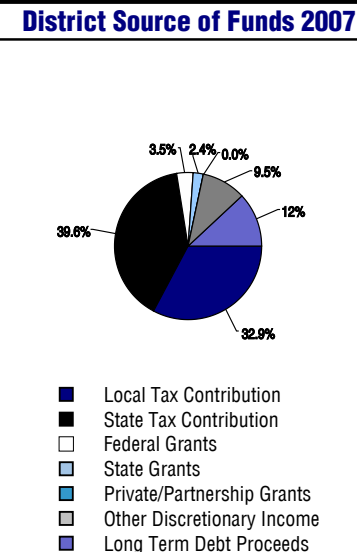
Student Information Over Time

	2005-2006	2006-2007	2007-2008
Student Enrollment Stability	97.7%	97.6%	98.1%
Students Eligible for Free and Reduced Lunch	8.0 %	9.3 %	7.4 %

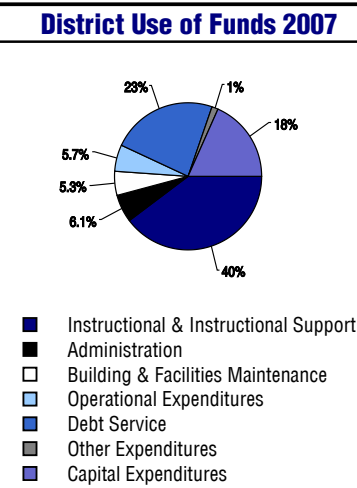
For more information and further details about this report, visit www.state.co.us/schools
 Colorado Department of Education, 201 East Colfax Ave. Denver, CO 80203
Timberview Middle School
 1040/8851/M
 8680 Scarborough Drive . Colorado Springs, CO 80920 . 719-234-3600
 10/20/2008

DISTRICT TAXPAYER'S REPORT

Sources of School District Revenue	2007
Local Tax Contribution	\$72,894,575
State Tax Contribution	87,704,768
Federal Grants	7,697,165
State Grants	5,344,051
Private/Partnership Grants	106,705
Other Discretionary Income	21,038,721
Total District Operating Revenue	\$194,785,985
Long Term Debt Proceeds	26,704,026
Total District Revenue	\$221,490,011
Total District Operating Revenue Per Pupil =	\$9,707
Total District Revenue Per Pupil (Including Long Term Debt) =	\$11,037
District Per Pupil Operating Revenue =	\$5,723
State Average Per Pupil Operating Revenue =	\$6,080



District Use of Funds	2007
Instructional & Instructional Support	\$114,062,404
Administration	17,500,697
Building & Facilities Maintenance	15,242,632
Operational Expenditures	16,214,407
Debt Service	67,378,705
Other Expenditures	3,863,903
Total District Operating Expenditures	\$234,262,748
Capital Expenditures	52,595,270
Total District Use of Funds	\$286,858,018



District Debt and Capital Construction & Equipment

Total Outstanding Bonded Debt	\$212,614,463
Average Annual Percentage Interest Rate on Debt	4.5%
Amount Raised from Most Recent Bond	\$163,000,000
Amount Spent on New Buildings During Last 2 Years	\$59,382,173

Accreditation

Accreditation is Colorado's primary accountability system, incorporating achievement levels, academic growth, achievement gaps, post-secondary readiness, improvement planning, and compliance. The state accredits districts and districts accredit individual schools.

District Accreditation Status for the 2007-2008 school year:

Voter Approved Funding Changes

Your community did /did not hold an election in November 2006

The following items have been approved by voters:

- TABOR Override
- Bond
- Mill Levy Increase

TIMBERVIEW MIDDLE SCHOOL



ACADEMY 20

<http://www.asd20.org/education/district/district.php?sectionid=1>

School Accountability Report 2007-2008 School Year

School Performance Summary

Overall Academic Performance on State Assessments **High**

Academic Growth of Students **Low**

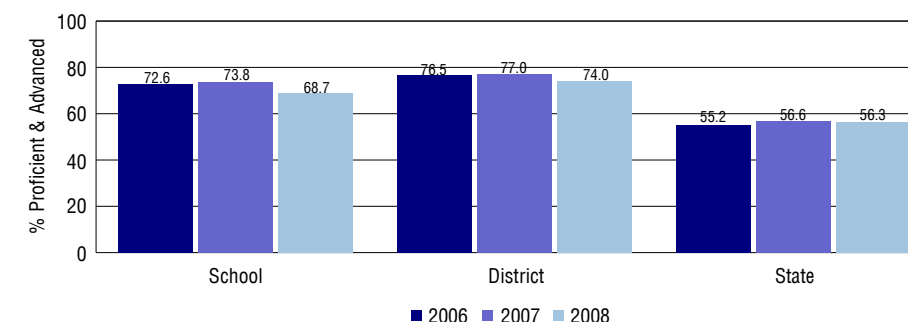
Overall Academic Performance on State Assessments

Each school in the State received a rating of "Excellent", "High", "Average", "Low", or "Unsatisfactory" for student academic performance based on 2007-2008 CSAP and COACT results. The rating is calculated using weighted percentages of each CSAP proficiency level for all content area and grade results for the school, as well as average COACT Reading, Writing, and Math Grade 11 results.

Academic Growth of Students

Each school in the State received a rating of "Low", "Typical", or "High" for student academic growth based on CSAP results. The calculation method is new for 2007-2008. The rating is calculated using student percentile scores matched over two years. More information about the Overall Academic Performance rating and Academic Growth of Students calculations can be found here: http://www.cde.state.co.us/cdeassess/SAR_Info.html.

Percent Proficient and Advanced for Middle Grades for All Content Areas



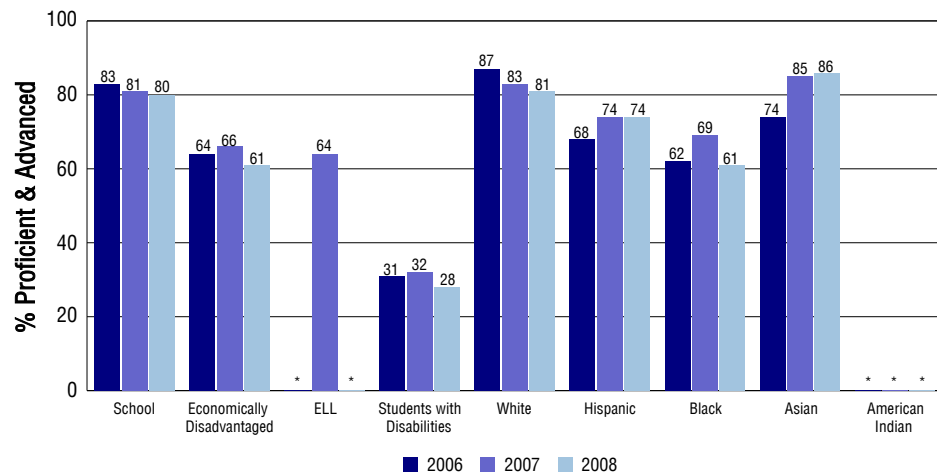
Student Test Scores Used For Calculating Overall Academic Performance

94.5%	Test Scores Counted
0.0%	Test Scores not used due to Language
5.5%	Test Scores not used due to New Student

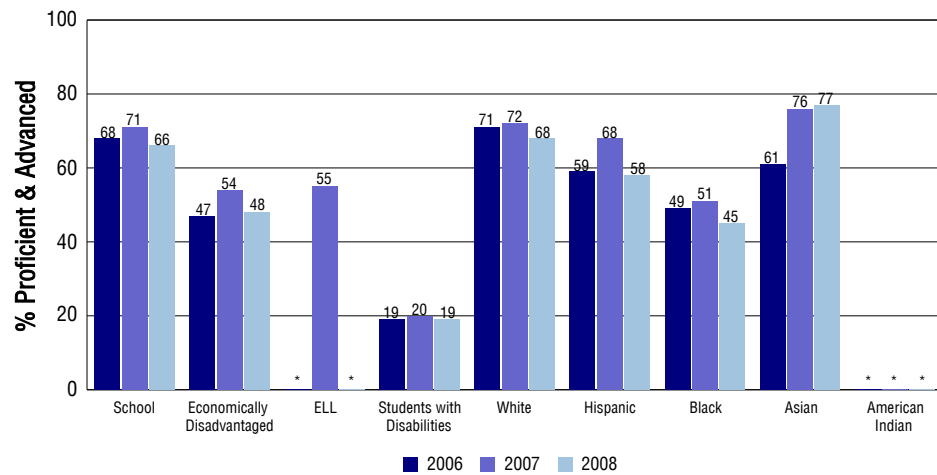
STUDENT PERFORMANCE

These graphs show the percent Proficient and Advanced trends over the past three years for Reading, Writing, and Math. Results are presented for the entire school for all reported grades as well as for different subgroups. Note: * indicates any group with less than 16 student results to be reported.

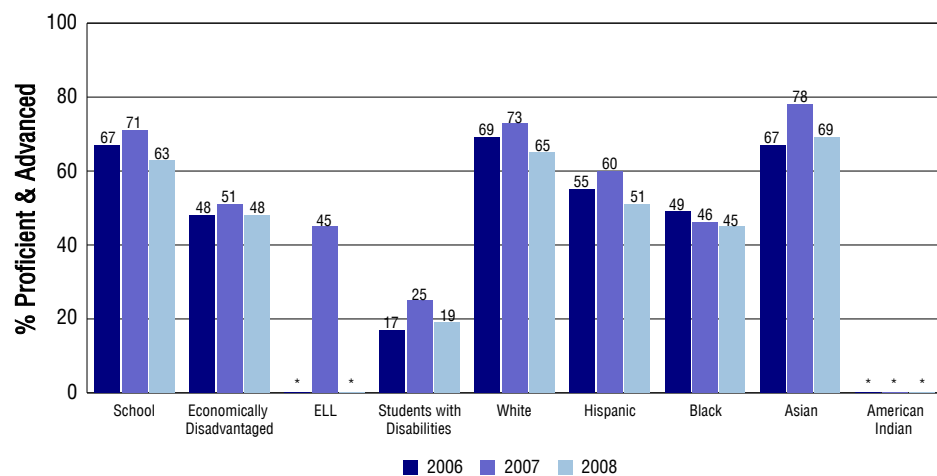
Reading



Writing



Math



SCHOOL INFORMATION

School Pride (as submitted by your district)

- Students dominated National Current Events League competition in 2006/2007 school year. Timberview won 1st place with highest margin recorded in competition.
- Fifteen early release days allow staff to work in professional learning communities with opportunities to analyze student data & develop differentiated lessons.
- Christie George 8th grade science, elective teacher, & Timberview's 2006/2007 Teacher of the Year coordinates Advancement Via Individual Determination program
- Top 100 State Geography Bee Competition, honorable mention Scholastic American Dream contest, honorable mention Future Scenario Writing Competition achievements

School Goals (as submitted by your district)

All students will develop high trust relationships with at least three adults in the building through increased student/teacher communications and more frequent celebrations of their successes. Four to six essential learning outcomes (i.e. power standards) will be identified and communicated to all stakeholders for each quarter and for all subjects/courses taught at Timberview Middle School. Common (formative) assessments will be utilized for each subject/course taught at Timberview Middle School. All students will demonstrate proficiency in paragraph writing as measured by the grade level targets based upon the 6 Trait Writing rubric.

No Child Left Behind - Adequate Yearly Progress

Did your school make AYP in reading?	Yes	Math?	Yes
How many targets does your school have?	38	Met?	38

Based on this school's academic performance, your child may be eligible for one or more of the following; ask your school if your child qualifies for:

Extra academic instruction either before or after-school, or in the summer
Mentoring

For additional information regarding Adequate Yearly Progress please visit
<http://www.cde.state.co.us/FedPrograms/ayp/index.asp>

How Timberview Middle School Compares To Middle Schools Within A 75-Mile Radius

School	Program Type	Academic Performance	Academic Growth
Jenkins Middle School(1)		High	High
Mountain Ridge Middle School		High	Low
Banning Lewis Ranch Academy(2)	Charter	High	Typical
Skyview Middle School(2)		High	Typical
Russell Middle School(1)		High	High
Challenger Middle School		Excellent	Low
Sabin Middle School(1)		Average	Typical
Colorado Springs Charter Academy(3)	Charter	Excellent	High
Rocky Mountain Classical Academy(2)	Charter	High	Low
Horizon Middle School(2)		High	High

1 Located in Colorado Springs 11 School District.
2 Located in Falcon 49 School District.
3 Located in Charter School Institute School District.

ABOUT OUR STAFF

School Employment

Each year, your district reports to the Colorado Department of Education on the number of adults who work in your school, as well as the type of work they do. Last year, your school employed:

	Your School		District	
	Full Time	Part Time	Full Time	Part Time
Teachers	55	3	1207	174
Paraprofessionals	6	10	297	208
Administrators	4	0	128	5
Other Professionals	0	3	142	68
School Support	13	4	439	195
School Counselors	3	0	44	19
School Librarians	1	0	13	6
Total Staff	100		2880	

Students per Teacher Ratio

	Student Enrollment	Students per Teacher
Grade 6	291	15.6
Grade 7	342	17.6
Grade 8	354	19.3

Professional Experience of Teachers

	Your School	District
Average years of teaching experience	12	11
Percent of teachers teaching in the subject in which they received their degree	75%	78%
Number of teachers with Masters or Doctoral degrees	35	758
Teachers with 3 years or more of teaching experience	51	1149
Teachers with less than 3 years of teaching experience	7	232
Number of professional development days	4	4

Salaries

	Your School	District	State
Average Teacher Salary	\$48,235	\$44,227	\$47,494
Average Administrator Salary	\$79,503	\$85,591	\$80,444

Principal: David Peak

Number of years as Principal at this school: 4

Number of years as Principal at any school: 7