

SAFETY AND SCHOOL ENVIRONMENT

Non-CSAP Course Offerings

Your School Offers	does	does not
• art.....	<input checked="" type="checkbox"/>	<input type="checkbox"/>
• drama or theater.....	<input type="checkbox"/>	<input checked="" type="checkbox"/>
• music.....	<input checked="" type="checkbox"/>	<input type="checkbox"/>
• physical education.....	<input checked="" type="checkbox"/>	<input type="checkbox"/>
• opportunity for civic or community engagement.....	<input checked="" type="checkbox"/>	<input type="checkbox"/>
• internet safety program.....	<input checked="" type="checkbox"/>	<input type="checkbox"/>
• International Baccalaureate.....	<input type="checkbox"/>	<input checked="" type="checkbox"/>
• extracurricular activities.....	<input checked="" type="checkbox"/>	<input type="checkbox"/>
• athletics.....	<input checked="" type="checkbox"/>	<input type="checkbox"/>
• preschool program.....	<input checked="" type="checkbox"/>	<input type="checkbox"/>
• full-day kindergarten program.....	<input checked="" type="checkbox"/>	<input type="checkbox"/>
• before-and-after-school care program.....	<input checked="" type="checkbox"/>	<input type="checkbox"/>

Safety and Discipline

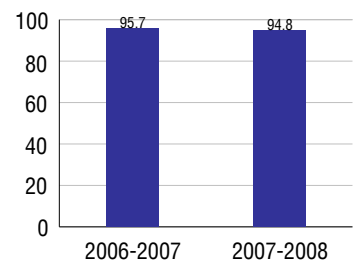
Safe schools are a top priority for parents, teachers, and communities. Your school safety and discipline record for the 2007-2008 school year is:

Type of Incident	Number of Incidents Reported	Percent of Total Incidents
Substance Abuse - Drugs		
Substance Abuse - Alcohol		
Substance Abuse - Tobacco		
Felony Assaults		
Fights	19	18.1%
Possession of Dangerous Weapons	3	2.9%
Other Violations Code of Conduct	83	79.0%

Student Attendance and School Calendar

2007-2008	Your School
Enrollment	348
Average Daily Attendance	330
Student Dropouts	N/A

Attendance Rate



Student Information Over Time

	2005-2006	2006-2007	2007-2008
Student Enrollment Stability	91%	87.6%	82.5%
Students Eligible for Free and Reduced Lunch	77.7 %	70.9 %	71.8 %

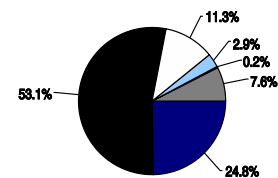
For more information and further details about this report, visit www.state.co.us/schools
 Colorado Department of Education, 201 East Colfax Ave. Denver, CO 80203
Turman Elementary School
 0980/8923/E
 3245 Springnite Drive . Colorado Springs, CO 80916 . 719-579-2195
 10/20/2008

DISTRICT TAXPAYER'S REPORT

Sources of School District Revenue 2007

Local Tax Contribution	\$25,649,648
State Tax Contribution	54,792,326
Federal Grants	11,684,958
State Grants	3,005,272
Private/Partnership Grants	233,124
Other Discretionary Income	7,867,774
Total District Operating Revenue	\$103,233,102
Long Term Debt Proceeds	0
Total District Revenue	\$103,233,102
Total District Operating Revenue Per Pupil =	\$9,939
Total District Revenue Per Pupil (Including Long Term Debt) =	\$9,939
District Per Pupil Operating Revenue =	\$6,167
State Average Per Pupil Operating Revenue =	\$6,080

District Source of Funds 2007

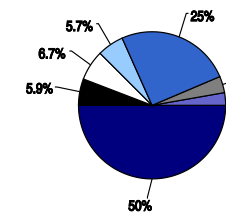


- Local Tax Contribution
- State Tax Contribution
- Federal Grants
- State Grants
- Private/Partnership Grants
- Other Discretionary Income
- Long Term Debt Proceeds

District Use of Funds 2007

Instructional & Instructional Support	\$62,760,266
Administration	7,419,965
Building & Facilities Maintenance	8,364,383
Operational Expenditures	7,201,191
Debt Service	31,770,220
Other Expenditures	4,469,015
Total District Operating Expenditures	\$121,985,040
Capital Expenditures	3,507,411
Total District Use of Funds	\$125,492,451

District Use of Funds 2007



- Instructional & Instructional Support
- Administration
- Building & Facilities Maintenance
- Operational Expenditures
- Debt Service
- Other Expenditures
- Capital Expenditures

District Debt and Capital Construction & Equipment

Total Outstanding Bonded Debt	\$76,720,000
Average Annual Percentage Interest Rate on Debt	4.99%
Amount Raised from Most Recent Bond	\$60,000,000
Amount Spent on New Buildings During Last 2 Years	\$3,193,517

Accreditation

Accreditation is Colorado's primary accountability system, incorporating achievement levels, academic growth, achievement gaps, post-secondary readiness, improvement planning, and compliance. The state accredits districts and districts accredit individual schools.

District Accreditation Status for the 2007-2008 school year: Notice with Support

Voter Approved Funding Changes

Your community did /did not hold an election in November 2006

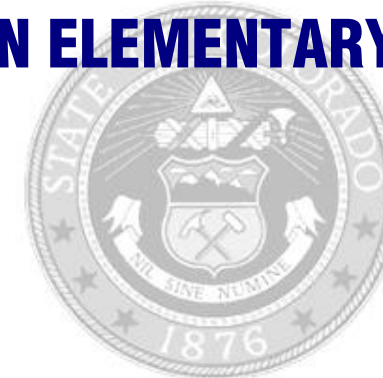
The following items have been approved by voters:

TABOR Override

Bond

Mill Levy Increase

TURMAN ELEMENTARY SCHOOL



HARRISON 2

www.hsd2.org

School Accountability Report 2007-2008 School Year

School Performance Summary

Overall Academic Performance on State Assessments **Low**

Academic Growth of Students **Typical**

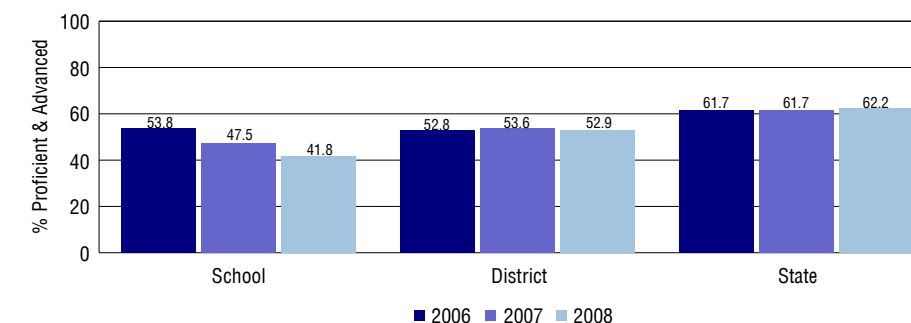
Overall Academic Performance on State Assessments

Each school in the State received a rating of "Excellent", "High", "Average", "Low", or "Unsatisfactory" for student academic performance based on 2007-2008 CSAP and COACT results. The rating is calculated using weighted percentages of each CSAP proficiency level for all content area and grade results for the school, as well as average COACT Reading, Writing, and Math Grade 11 results.

Academic Growth of Students

Each school in the State received a rating of "Low", "Typical", or "High" for student academic growth based on CSAP results. The calculation method is new for 2007-2008. The rating is calculated using student percentile scores matched over two years. More information about the Overall Academic Performance rating and Academic Growth of Students calculations can be found here: http://www.cde.state.co.us/cdeassess/SAR_Info.html.

Percent Proficient and Advanced for Elementary Grades for All Content Areas



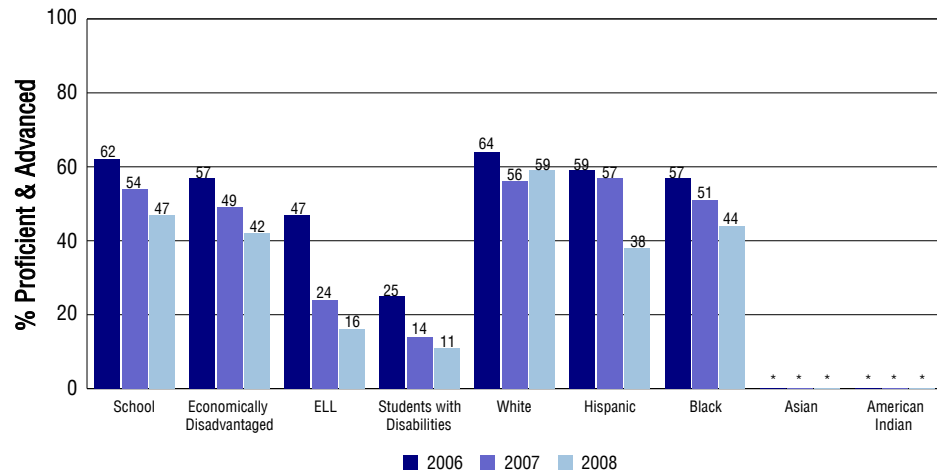
Student Test Scores Used For Calculating Overall Academic Performance

84.5%	Test Scores Counted
5.9%	Test Scores not used due to Language
9.6%	Test Scores not used due to New Student

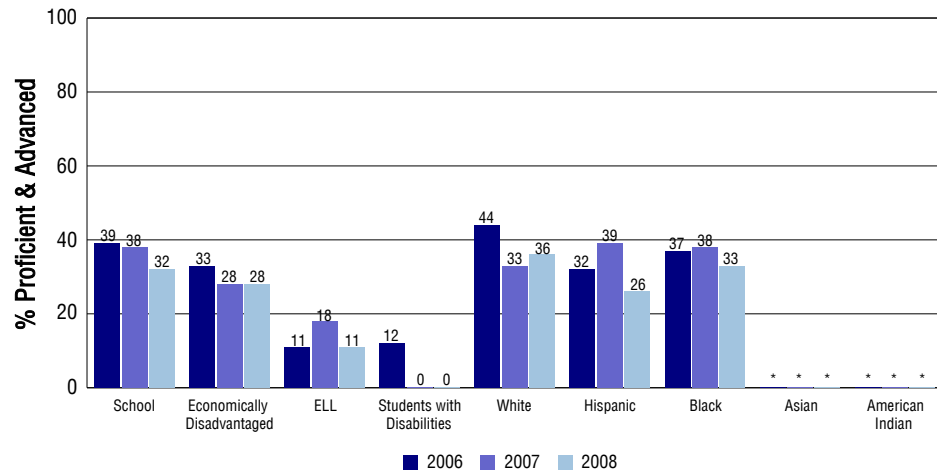
STUDENT PERFORMANCE

These graphs show the percent Proficient and Advanced trends over the past three years for Reading, Writing, and Math. Results are presented for the entire school for all reported grades as well as for different subgroups. Note: * indicates any group with less than 16 student results to be reported.

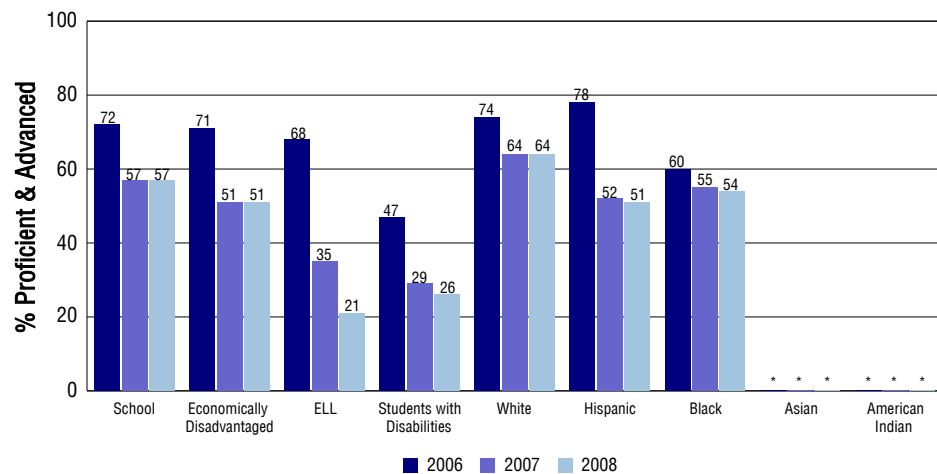
Reading



Writing



Math



SCHOOL INFORMATION

School Pride (as submitted by your district)

- Turman has a positive, uplifting culture that influences students, staff, and community. Staff demonstrate a strong sense of ownership for every child.
- Our parent and community support is demonstrated by high attendance at school events and parent/teacher conferences.
- We are the site of the district autism program in which students are embedded in the regular academic program while receiving specialized instruction.
- Students at all grades are highly engaged in focused learning activities each day.

School Goals (as submitted by your district)

Our overriding goal at Turman is for each student to demonstrate at least a year's academic growth over the course of each school year. To help ensure this outcome we are focusing this year upon high levels of student engagement and focused instruction in writing. We are developing engaging classrooms throughout our building through a team of teachers receiving advanced training in engagement strategies. This team conducts professional development as well as hands on training within classrooms. Student writing is being improved through multiple writing opportunities and writer's checklists at all grade levels as formative assessments to foster adjustments to instruction.

No Child Left Behind - Adequate Yearly Progress

Did your school make AYP in reading?	Yes	Math?	Yes
How many targets does your school have?	22	Met?	22

Based on this school's academic performance, your child may be eligible for one or more of the following; ask your school if your child qualifies for:

Extra academic instruction either before or after-school, or in the summer
Mentoring

For additional information regarding Adequate Yearly Progress please visit
<http://www.cde.state.co.us/FedPrograms/ayp/index.asp>

How Turman Elementary School Compares To Elementary Schools Within A 75-Mile Radius

School	Program Type	Academic Performance	Academic Growth
Giberson Elementary School		Low	Low
Soaring Eagles Elementary School		High	Typical
Bricker Elementary School		Average	Typical
Pinello Elementary School(1)		Average	Typical
Monterey Elementary School		Low	Low
French Elementary School(1)		Average	Typical
Centennial Elementary School		Low	Typical
North Elementary School(1)		Average	Typical
James Irwin Charter Elementary School	Charter	High	Typical
Mountain Vista Community School	Magnet	Average	High

1 Located in Widefield 3 School District.

ABOUT OUR STAFF

School Employment

Each year, your district reports to the Colorado Department of Education on the number of adults who work in your school, as well as the type of work they do. Last year, your school employed:

	Your School		District	
	Full Time	Part Time	Full Time	Part Time
Teachers	23	4	717	64
Paraprofessionals	9	5	202	55
Administrators	2	0	82	2
Other Professionals	0	0	73	33
School Support	2	5	215	139
School Counselors	1	0	32	5
School Librarians	0	0	9	0
Total Staff	51		1614	

Students per Teacher Ratio

	Student Enrollment	Students per Teacher
Grade 1	57	12.8
Grade 2	60	13.5
Grade 3	46	10.3
Grade 4	47	13.6
Grade 5	46	10.5

Professional Experience of Teachers

	Your School	District
Average years of teaching experience	7	7
Percent of teachers teaching in the subject in which they received their degree	N/A	N/A
Number of teachers with Masters or Doctoral degrees	12	292
Teachers with 3 years or more of teaching experience	19	517
Teachers with less than 3 years of teaching experience	8	264
Number of professional development days	10	10

Salaries

	Your School	District	State
Average Teacher Salary	\$41,425	\$40,390	\$47,494
Average Administrator Salary	\$68,162	\$76,965	\$80,444

Principal: Martin Schneider

Number of years as Principal at this school: 1 (New Hire 2007/2008)

Number of years as Principal at any school: 1