

SAFETY AND SCHOOL ENVIRONMENT

Non-CSAP Course Offerings

Your School Offers	does	does not
• art.....	<input checked="" type="checkbox"/>	<input type="checkbox"/>
• drama or theater.....	<input type="checkbox"/>	<input checked="" type="checkbox"/>
• music.....	<input checked="" type="checkbox"/>	<input type="checkbox"/>
• physical education.....	<input checked="" type="checkbox"/>	<input type="checkbox"/>
• opportunity for civic or community engagement.....	<input checked="" type="checkbox"/>	<input type="checkbox"/>
• internet safety program.....	<input type="checkbox"/>	<input checked="" type="checkbox"/>
• International Baccalaureate.....	<input type="checkbox"/>	<input checked="" type="checkbox"/>
• extracurricular activities.....	<input checked="" type="checkbox"/>	<input type="checkbox"/>
• athletics.....	<input type="checkbox"/>	<input checked="" type="checkbox"/>
• preschool program.....	<input checked="" type="checkbox"/>	<input type="checkbox"/>
• full-day kindergarten program.....	<input checked="" type="checkbox"/>	<input type="checkbox"/>
• before-and-after-school care program.....	<input type="checkbox"/>	<input checked="" type="checkbox"/>

Safety and Discipline

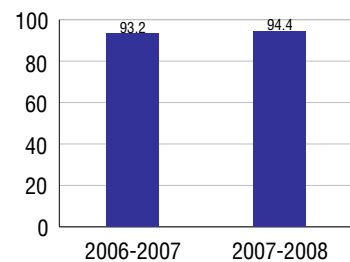
Safe schools are a top priority for parents, teachers, and communities. Your school safety and discipline record for the 2007-2008 school year is:

Type of Incident	Number of Incidents Reported	Percent of Total Incidents
Substance Abuse - Drugs		
Substance Abuse - Alcohol		
Substance Abuse - Tobacco		
Felony Assaults		
Fights		
Possession of Dangerous Weapons		
Other Violations Code of Conduct		

Student Attendance and School Calendar

2007-2008	Your School
Enrollment	129
Average Daily Attendance	122
Student Dropouts	N/A

Attendance Rate



Student Information Over Time

	2005-2006	2006-2007	2007-2008
Student Enrollment Stability	85.3%	90.6%	98.4%
Students Eligible for Free and Reduced Lunch	36.0 %	24.2 %	22.5 %

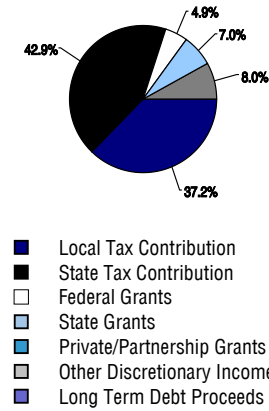
For more information and further details about this report, visit www.state.co.us/schools
 Colorado Department of Education, 201 East Colfax Ave. Denver, CO 80203
Ute Pass Elementary School
 1030/9010/E
 9230 Chipita Park Road . Chipita Park, CO 80809 . 719-685-2227
 10/20/2008

DISTRICT TAXPAYER'S REPORT

Sources of School District Revenue 2007

Local Tax Contribution	\$5,076,506
State Tax Contribution	5,857,365
Federal Grants	669,895
State Grants	955,050
Private/Partnership Grants	0
Other Discretionary Income	1,088,208
Total District Operating Revenue	\$13,647,024
Long Term Debt Proceeds	0
Total District Revenue	\$13,647,024
Total District Operating Revenue Per Pupil =	\$10,449
Total District Revenue Per Pupil (Including Long Term Debt) =	\$10,449
District Per Pupil Operating Revenue =	\$6,162
State Average Per Pupil Operating Revenue =	\$6,080

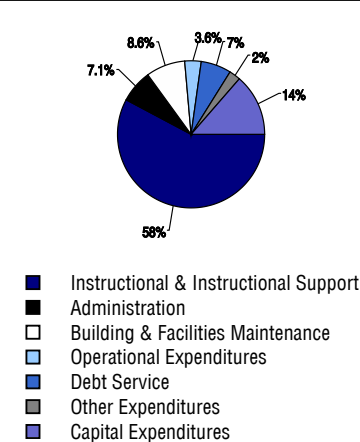
District Source of Funds 2007



District Use of Funds 2007

Instructional & Instructional Support	\$7,940,140
Administration	978,531
Building & Facilities Maintenance	1,187,532
Operational Expenditures	490,091
Debt Service	939,158
Other Expenditures	325,721
Total District Operating Expenditures	\$11,861,173
Capital Expenditures	1,869,268
Total District Use of Funds	\$13,730,441

District Use of Funds 2007



District Debt and Capital Construction & Equipment

Total Outstanding Bonded Debt	\$8,480,000
Average Annual Percentage Interest Rate on Debt	5.3%
Amount Raised from Most Recent Bond	\$8,500,000
Amount Spent on New Buildings During Last 2 Years	\$28,123

Accreditation

Accreditation is Colorado's primary accountability system, incorporating achievement levels, academic growth, achievement gaps, post-secondary readiness, improvement planning, and compliance. The state accredits districts and districts accredit individual schools.

District Accreditation Status for the 2007-2008 school year:

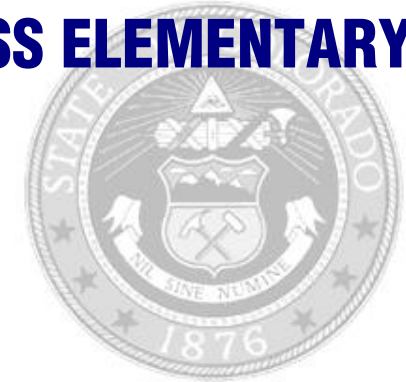
Voter Approved Funding Changes

Your community did /did not hold an election in November 2006

The following items have been approved by voters:

- TABOR Override
- Bond
- Mill Levy Increase \$1,000,000

UTE PASS ELEMENTARY SCHOOL



MANITOU SPRINGS 14

<http://www.mssd14.org>

School Accountability Report 2007-2008 School Year

School Performance Summary

Overall Academic Performance on State Assessments

High

Academic Growth of Students

Typical

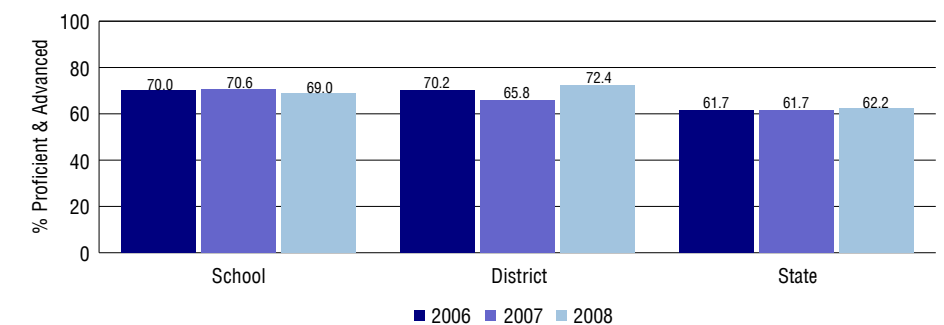
Overall Academic Performance on State Assessments

Each school in the State received a rating of "Excellent", "High", "Average", "Low", or "Unsatisfactory" for student academic performance based on 2007-2008 CSAP and COACT results. The rating is calculated using weighted percentages of each CSAP proficiency level for all content area and grade results for the school, as well as average COACT Reading, Writing, and Math Grade 11 results.

Academic Growth of Students

Each school in the State received a rating of "Low", "Typical", or "High" for student academic growth based on CSAP results. The calculation method is new for 2007-2008. The rating is calculated using student percentile scores matched over two years. More information about the Overall Academic Performance rating and Academic Growth of Students calculations can be found here: http://www.cde.state.co.us/cdeassess/SAR_Info.html.

Percent Proficient and Advanced for Elementary Grades for All Content Areas



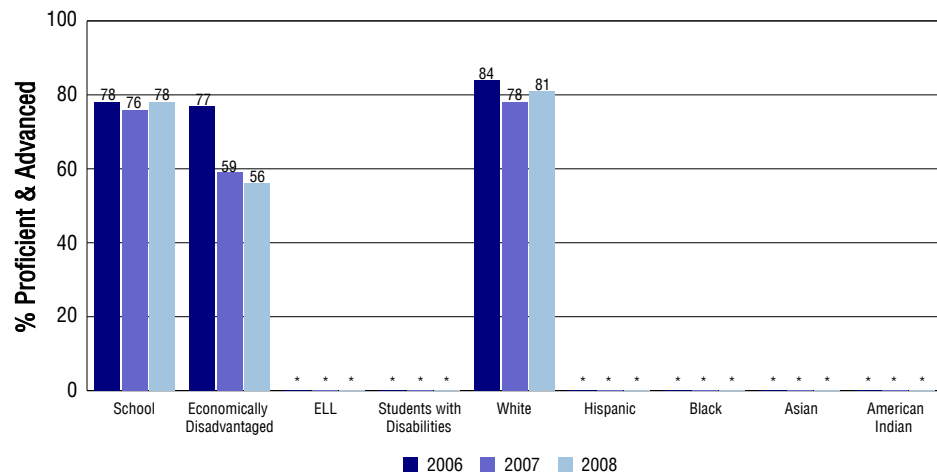
Student Test Scores Used For Calculating Overall Academic Performance

94.3%	Test Scores Counted
0.0%	Test Scores not used due to Language
5.7%	Test Scores not used due to New Student

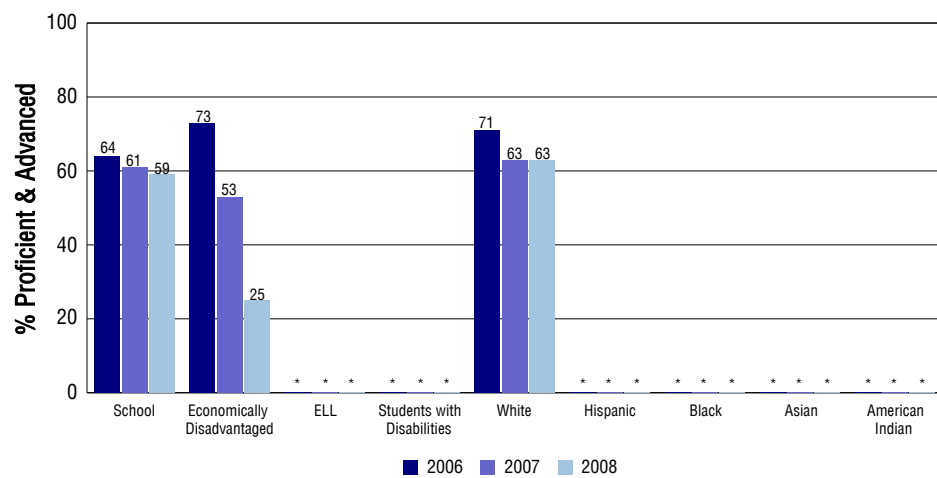
STUDENT PERFORMANCE

These graphs show the percent Proficient and Advanced trends over the past three years for Reading, Writing, and Math. Results are presented for the entire school for all reported grades as well as for different subgroups. Note: * indicates any group with less than 16 student results to be reported.

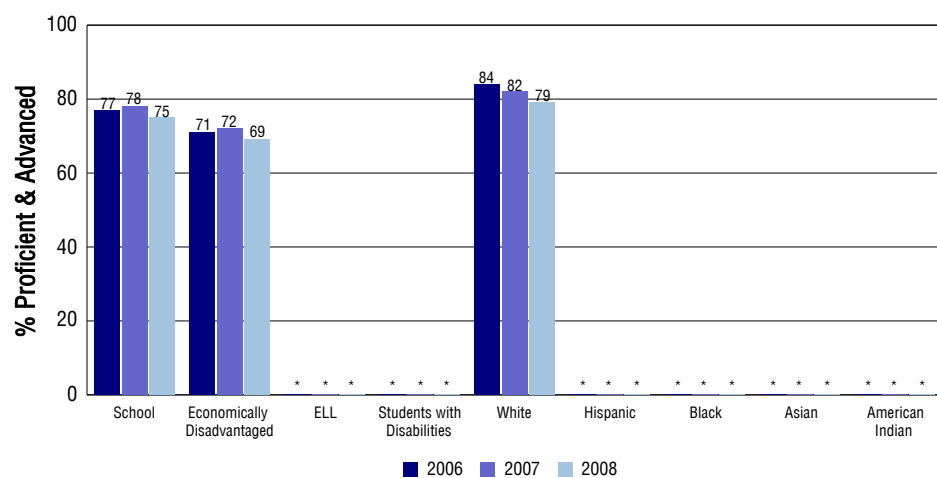
Reading



Writing



Math



SCHOOL INFORMATION

School Pride (as submitted by your district)

- Our small class size allows teachers to meet the relationship, rigor and opportunity needs of each child.
- Our school has an exemplary relationship with our community confirmed by more than 1500 volunteer hours and an annual 5K/1 mile event backed by our community.
- Our students exhibited local and global stewardship by maintaining the Ute Pass Trail and sending school supplies, books and clothing to a Honduran orphanage.
- In addition to our gifted and talented students annual Shakespeare evening, 28% of our school competed as five Destination ImagiNation teams this year.

School Goals (as submitted by your district)

The goals for Ute Pass Elementary this next year fall into three categories: Relationships, Rigor and Opportunity. First, we will continue to collect safety and climate information via a Survey of School Climate. Second, we will continue to improve writing skills through the horizontal and vertical identification of K-5 Essential Learnings (ELs). This will be substantiated by the creation and initiation of annual writing pre and post assessments related to those ELs. And, finally, we will investigate ways to improve the transition of UPE students from fifth to sixth grade.

No Child Left Behind - Adequate Yearly Progress

Did your school make AYP in reading? Yes Math? Yes
 How many targets does your school have? 12 Met? 12

Based on this school's academic performance, your child may be eligible for one or more of the following; ask your school if your child qualifies for:

Extra academic instruction either before or after-school, or in the summer
 Mentoring

For additional information regarding Adequate Yearly Progress please visit
<http://www.cde.state.co.us/FedPrograms/ayp/index.asp>

How Ute Pass Elementary School Compares To Elementary Schools Within A 75-Mile Radius

School	Program Type	Academic Performance	Academic Growth
Manitou Springs Elementary School		High	Typical
Gateway Elementary School(1)		High	Low
Chipeta Elementary School(2)		Excellent	High
Woodmen-Roberts Elementary School(3)		Excellent	Typical
Trailblazer Elementary School(2)		High	Low
Columbine Elementary School(1)		High	Typical
Howbert Elementary School(2)		Excellent	High
Pine Valley Elementary School(3)		High	Typical
Foothills Elementary School(3)		High	Typical
Whittier Elementary School(2)		Average	Typical

1 Located in Woodland Park RE-2 School District.

2 Located in Colorado Springs 11 School District.

3 Located in Academy 20 School District.

ABOUT OUR STAFF

School Employment

Each year, your district reports to the Colorado Department of Education on the number of adults who work in your school, as well as the type of work they do. Last year, your school employed:

	Your School		District	
	Full Time	Part Time	Full Time	Part Time
Teachers	8	5	89	10
Paraprofessionals	2	2	24	4
Administrators	1	0	12	0
Other Professionals	0	5	6	4
School Support	2	1	30	16
School Counselors	0	1	4	1
School Librarians	0	0	1	0
Total Staff	26		199	

Students per Teacher Ratio

	Student Enrollment	Students per Teacher
Grade 1	17	10.7
Grade 2	16	10.1
Grade 3	17	9.9
Grade 4	25	14.6
Grade 5	25	14.6

Professional Experience of Teachers

	Your School	District
Average years of teaching experience	10	10
Percent of teachers teaching in the subject in which they received their degree	N/A	N/A
Number of teachers with Masters or Doctoral degrees	5	43
Teachers with 3 years or more of teaching experience	10	79
Teachers with less than 3 years of teaching experience	3	20
Number of professional development days	9	8

Salaries

	Your School	District	State
Average Teacher Salary	\$37,963	\$41,098	\$47,494
Average Administrator Salary	\$69,319	\$73,336	\$80,444

Principal: Deborah Yagmin

Number of years as Principal at this school: 8

Number of years as Principal at any school: 8