

# SAFETY AND SCHOOL ENVIRONMENT

## Non-CSAP Course Offerings

Your School Offers	does	does not
• art.....	<input checked="" type="checkbox"/>	<input type="checkbox"/>
• drama or theater.....	<input type="checkbox"/>	<input checked="" type="checkbox"/>
• music.....	<input checked="" type="checkbox"/>	<input type="checkbox"/>
• physical education.....	<input checked="" type="checkbox"/>	<input type="checkbox"/>
• opportunity for civic or community engagement.....	<input type="checkbox"/>	<input checked="" type="checkbox"/>
• internet safety program.....	<input type="checkbox"/>	<input checked="" type="checkbox"/>
• International Baccalaureate.....	<input type="checkbox"/>	<input checked="" type="checkbox"/>
• extracurricular activities.....	<input checked="" type="checkbox"/>	<input type="checkbox"/>
• athletics.....	<input checked="" type="checkbox"/>	<input type="checkbox"/>
• preschool program.....	<input checked="" type="checkbox"/>	<input type="checkbox"/>
• full-day kindergarten program.....	<input checked="" type="checkbox"/>	<input type="checkbox"/>
• before-and-after-school care program.....	<input checked="" type="checkbox"/>	<input type="checkbox"/>

## Safety and Discipline

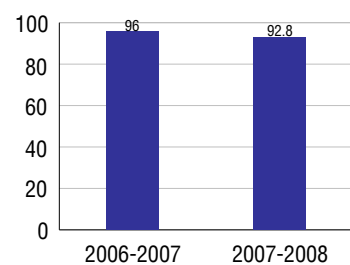
Safe schools are a top priority for parents, teachers, and communities. Your school safety and discipline record for the 2007-2008 school year is:

Type of Incident	Number of Incidents Reported	Percent of Total Incidents
Substance Abuse - Drugs		
Substance Abuse - Alcohol		
Substance Abuse - Tobacco		
Felony Assaults		
Fights		
Possession of Dangerous Weapons	1	3.4%
Other Violations Code of Conduct	28	96.6%

## Student Attendance and School Calendar

2007-2008	Your School
Enrollment	863
Average Daily Attendance	801
Student Dropouts	N/A

## Attendance Rate



## Student Information Over Time

	2005-2006	2006-2007	2007-2008
Student Enrollment Stability	86%	86.7%	91.2%
Students Eligible for Free and Reduced Lunch	6.6 %	9.0 %	10.8 %

For more information and further details about this report, visit [www.state.co.us/schools](http://www.state.co.us/schools)  
 Colorado Department of Education, 201 East Colfax Ave. Denver, CO 80203  
**Woodmen Hills Elementary School**  
 1110/9706/E  
 8308 Del Rio Road . Falcon, CO 80831 . 719-495-2256  
 10/20/2008

# DISTRICT TAXPAYER'S REPORT

Sources of School District Revenue	2007	District Source of Funds 2007
Local Tax Contribution	\$25,826,430	
State Tax Contribution	55,487,866	
Federal Grants	3,489,534	
State Grants	3,366,543	
Private/Partnership Grants	211,377	
Other Discretionary Income	9,296,771	
<b>Total District Operating Revenue</b>	<b>\$97,678,521</b>	
Long Term Debt Proceeds	58,558,145	
<b>Total District Revenue</b>	<b>\$156,236,666</b>	
<b>Total District Operating Revenue Per Pupil =</b>	<b>\$8,435</b>	
<b>Total District Revenue Per Pupil (Including Long Term Debt) =</b>	<b>\$13,491</b>	
<b>District Per Pupil Operating Revenue =</b>	<b>\$5,702</b>	
<b>State Average Per Pupil Operating Revenue =</b>	<b>\$6,080</b>	
District Use of Funds	2007	District Use of Funds 2007
Instructional & Instructional Support	\$52,917,238	
Administration	5,233,392	
Building & Facilities Maintenance	6,757,113	
Operational Expenditures	7,255,802	
Debt Service	27,424,795	
Other Expenditures	2,440,118	
<b>Total District Operating Expenditures</b>	<b>\$102,028,458</b>	
Capital Expenditures	42,107,141	
<b>Total District Use of Funds</b>	<b>\$144,135,599</b>	

## District Debt and Capital Construction & Equipment

Total Outstanding Bonded Debt	\$57,095,000
Average Annual Percentage Interest Rate on Debt	4.6%
Amount Raised from Most Recent Bond	\$28,000,000
Amount Spent on New Buildings During Last 2 Years	\$51,700,662

## Accreditation

Accreditation is Colorado's primary accountability system, incorporating achievement levels, academic growth, achievement gaps, post-secondary readiness, improvement planning, and compliance. The state accredits districts and districts accredit individual schools.

District Accreditation Status for the 2007-2008 school year:

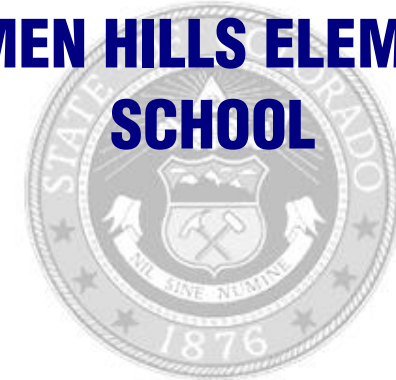
## Voter Approved Funding Changes

Your community did  /did not  hold an election in November 2006

The following items have been approved by voters:

TABOR Override       Bond       Mill Levy Increase

# WOODMEN HILLS ELEMENTARY SCHOOL



**FALCON 49**

<http://www.d49.org/schools/whes/>

## School Accountability Report 2007-2008 School Year

### School Performance Summary

**Overall Academic Performance on State Assessments** **High\***

\* Participation Noted

**Academic Growth of Students** **Typical**

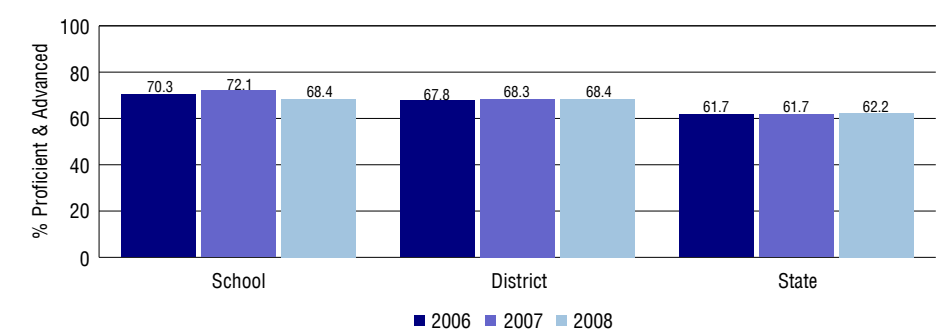
### Overall Academic Performance on State Assessments

Each school in the State received a rating of "Excellent", "High", "Average", "Low", or "Unsatisfactory" for student academic performance based on 2007-2008 CSAP and COACT results. The rating is calculated using weighted percentages of each CSAP proficiency level for all content area and grade results for the school, as well as average COACT Reading, Writing, and Math Grade 11 results.

### Academic Growth of Students

Each school in the State received a rating of "Low", "Typical", or "High" for student academic growth based on CSAP results. The calculation method is new for 2007-2008. The rating is calculated using student percentile scores matched over two years. More information about the Overall Academic Performance rating and Academic Growth of Students calculations can be found here: [http://www.cde.state.co.us/cdeassess/SAR\\_Info.html](http://www.cde.state.co.us/cdeassess/SAR_Info.html).

### Percent Proficient and Advanced for Elementary Grades for All Content Areas



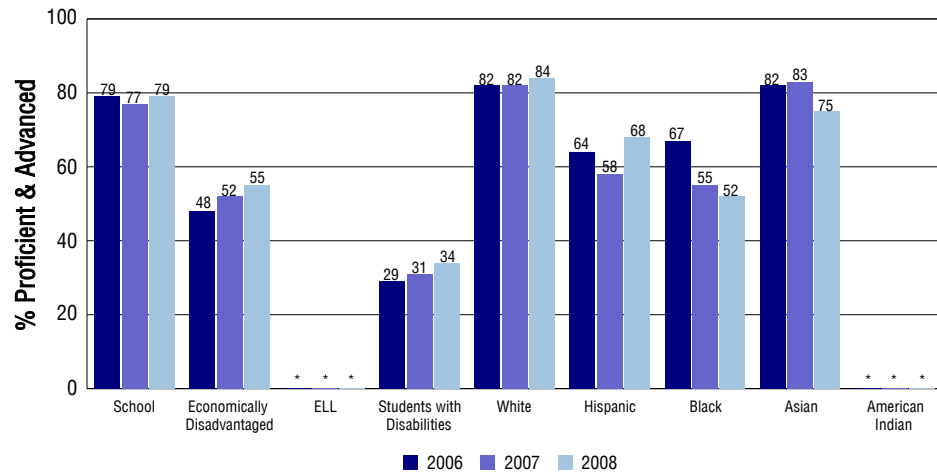
### Student Test Scores Used For Calculating Overall Academic Performance

86.0%	Test Scores Counted
0.0%	Test Scores not used due to Language
14.0%	Test Scores not used due to New Student

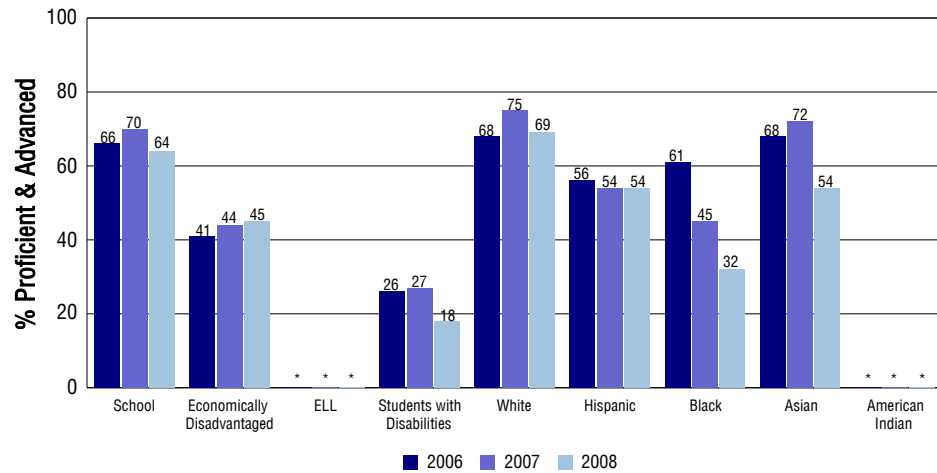
## STUDENT PERFORMANCE

These graphs show the percent Proficient and Advanced trends over the past three years for Reading, Writing, and Math. Results are presented for the entire school for all reported grades as well as for different subgroups. Note: \* indicates any group with less than 16 student results to be reported.

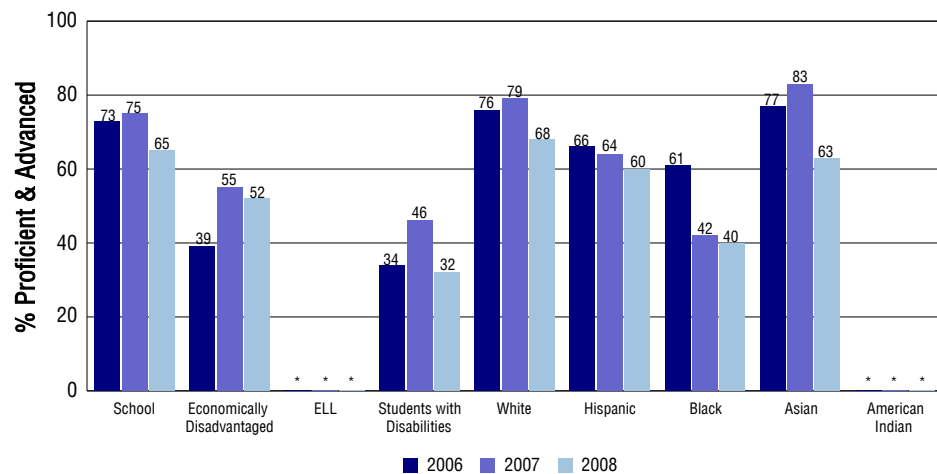
### Reading



### Writing



### Math



## SCHOOL INFORMATION

### School Pride (as submitted by your district)

- We are a Positive Behavioral Support(PBS) school.
- Our parent involvement is phenomenal. We have an average of 12 parent volunteers in our school every day.
- Students feel a strong sense of belonging at WHES.
- We are proud of the many contributions that our Parent Teacher Association has made to WHES.

### School Goals (as submitted by your district)

Woodmen Hills Elementary strives to improve as a data-driven school. We continue to gather accurate data and use that data to help drive instruction with the goal of improving student achievement and quality instruction. We are improving our writing instruction by focusing on a method called, Preparing to Write: Layers of Success, an approach that honors individual learning styles and thinking skills. This method of spiraling instruction allows students to build upon their accomplishments, using common language that teaches consistent vocabulary across the grade levels. Through purposeful instruction, we aim to impact student achievement.

### No Child Left Behind - Adequate Yearly Progress

Did your school make AYP in reading? Yes Math? No  
 How many targets does your school have? 30 Met? 29

Based on this school's academic performance, your child may be eligible for one or more of the following; ask your school if your child qualifies for:

Extra academic instruction either before or after-school, or in the summer  
 Mentoring

For additional information regarding Adequate Yearly Progress please visit  
<http://www.cde.state.co.us/FedPrograms/ayp/index.asp>

### How Woodmen Hills Elementary School Compares To Elementary Schools Within A 75-Mile Radius

School	Program Type	Academic Performance	Academic Growth
Falcon Elementary School		Average	Typical
Pikes Peak School Expeditionary Learning	Charter	Average	Typical
Meridian Ranch Elementary School		High	Typical
Banning Lewis Ranch Academy	Charter	High	Typical
Stetson Elementary School		High	Typical
Springs Ranch Elementary School		High	Typical
Ridgeview Elementary School		Average	Typical
Ranch Creek Elementary(1)		High	Typical
Remington Elementary School		High	Typical
Evans Elementary School		High	High

1 Located in Academy 20 School District.

## ABOUT OUR STAFF

### School Employment

Each year, your district reports to the Colorado Department of Education on the number of adults who work in your school, as well as the type of work they do. Last year, your school employed:

	Your School		District	
	Full Time	Part Time	Full Time	Part Time
Teachers	42	5	705	32
Paraprofessionals	15	5	177	62
Administrators	2	0	58	1
Other Professionals	0	0	61	10
School Support	7	5	220	106
School Counselors	1	0	21	0
School Librarians	1	0	15	0
<b>Total Staff</b>	83		1464	

### Students per Teacher Ratio

	Student Enrollment	Students per Teacher
Grade 1	112	17
Grade 2	123	22
Grade 3	109	16.5
Grade 4	144	19.6
Grade 5	126	19.1
Grade 6	107	19.1

### Professional Experience of Teachers

	Your School	District
Average years of teaching experience	9	8
Percent of teachers teaching in the subject in which they received their degree	N/A	N/A
Number of teachers with Masters or Doctoral degrees	15	248
Teachers with 3 years or more of teaching experience	47	658
Teachers with less than 3 years of teaching experience	0	79
Number of professional development days	5	6

### Salaries

	Your School	District	State
Average Teacher Salary	\$41,156	\$40,571	\$47,494
Average Administrator Salary	\$76,836	\$79,901	\$80,444

Principal: Monty Lammers (Assistant Principal)  
 Number of years as Principal at this school: N/A  
 Number of years as Principal at any school: N/A